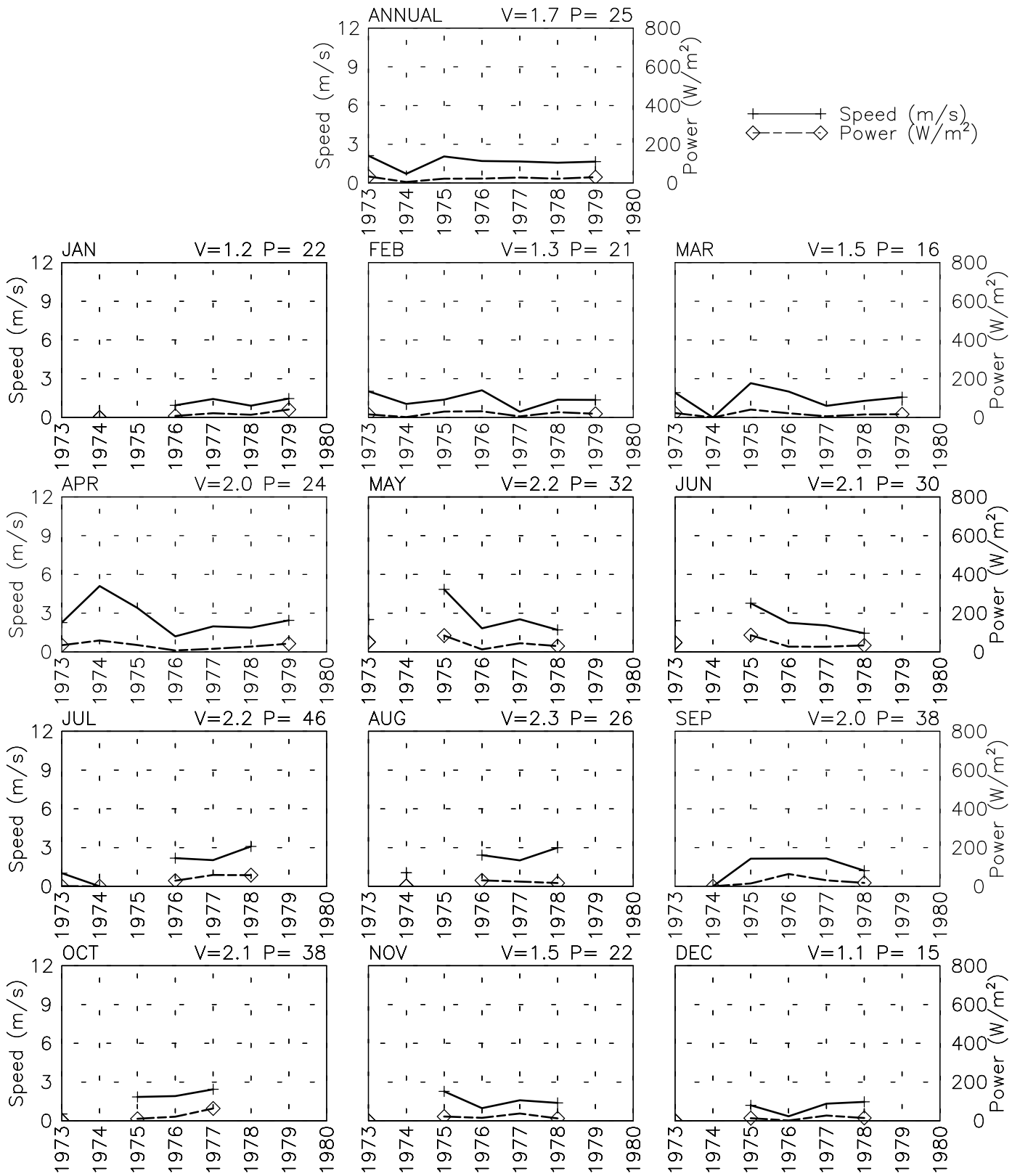


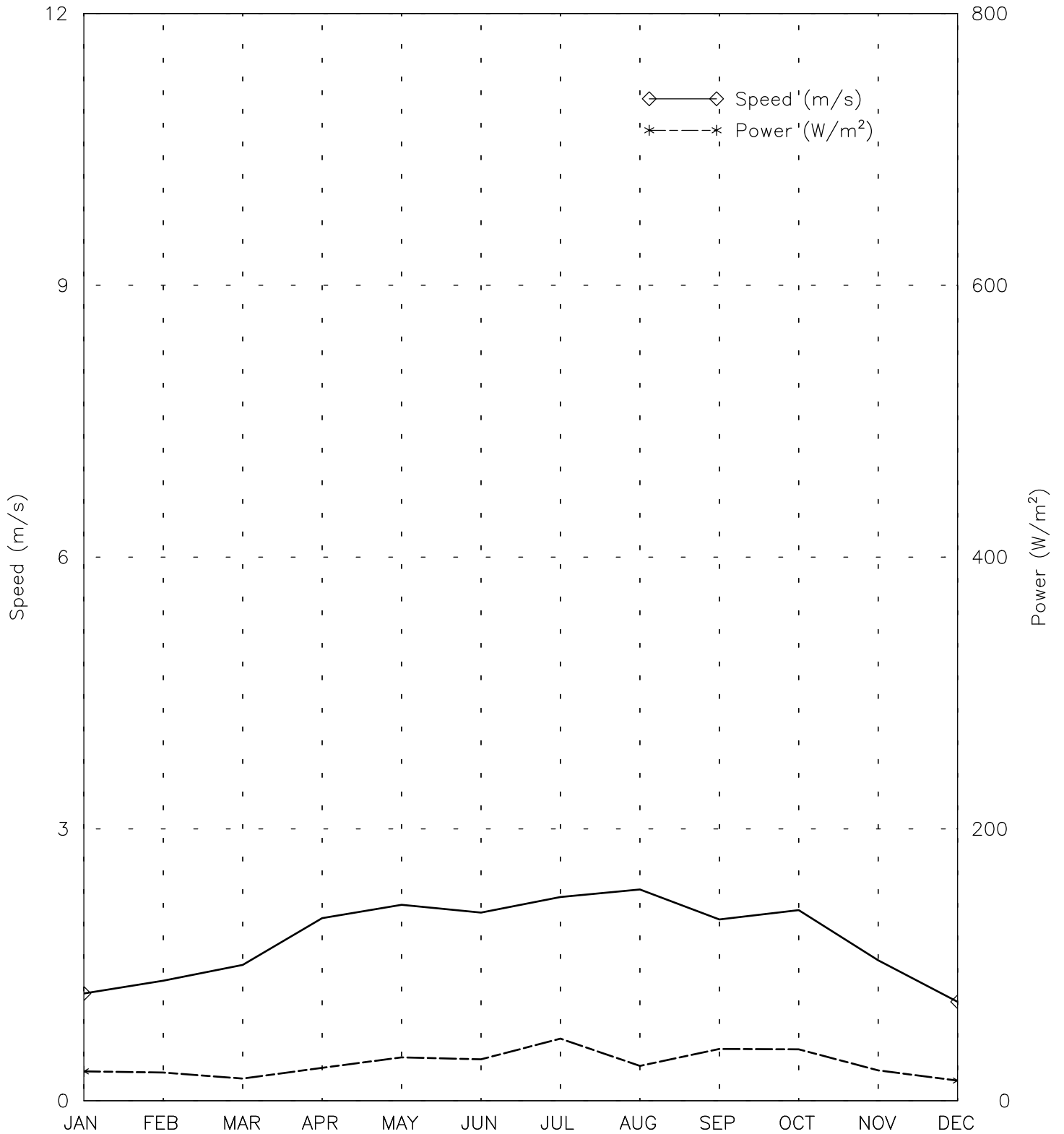
# SPEED AND POWER BY YEAR

LAL AF - 409440  
 34° 30' N 66° 18' E - Elev 2800m \*LST=GMT +5 hours NT= +4  
 02/73-04/79



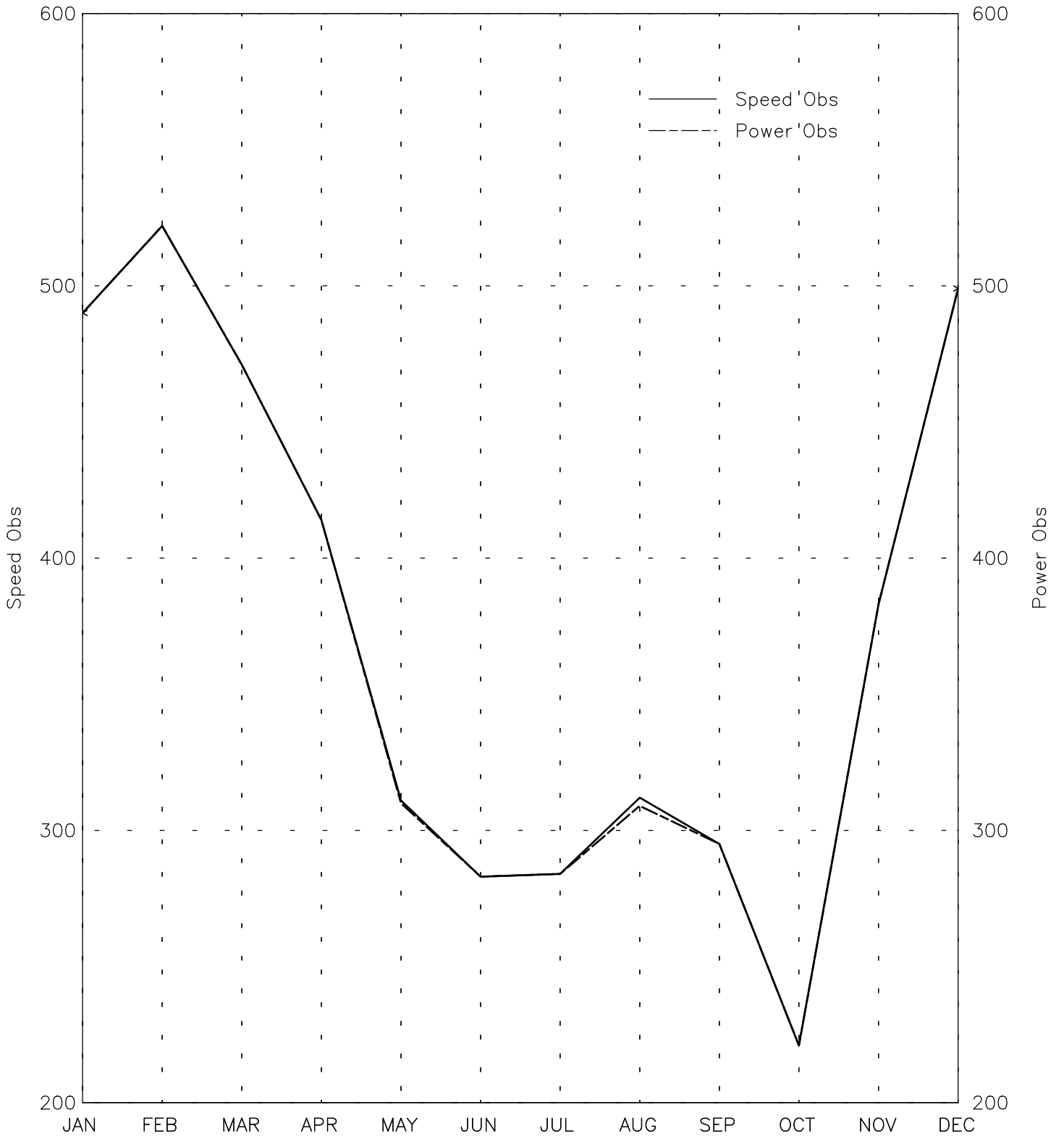
# SPEED AND POWER BY MONTH

LAL AF - 409440  
34° 30' N 66° 18' E - Elev 2800m \*LST=GMT +5 hours NT= +4  
02/73-04/79



# OBSERVATIONS BY MONTH

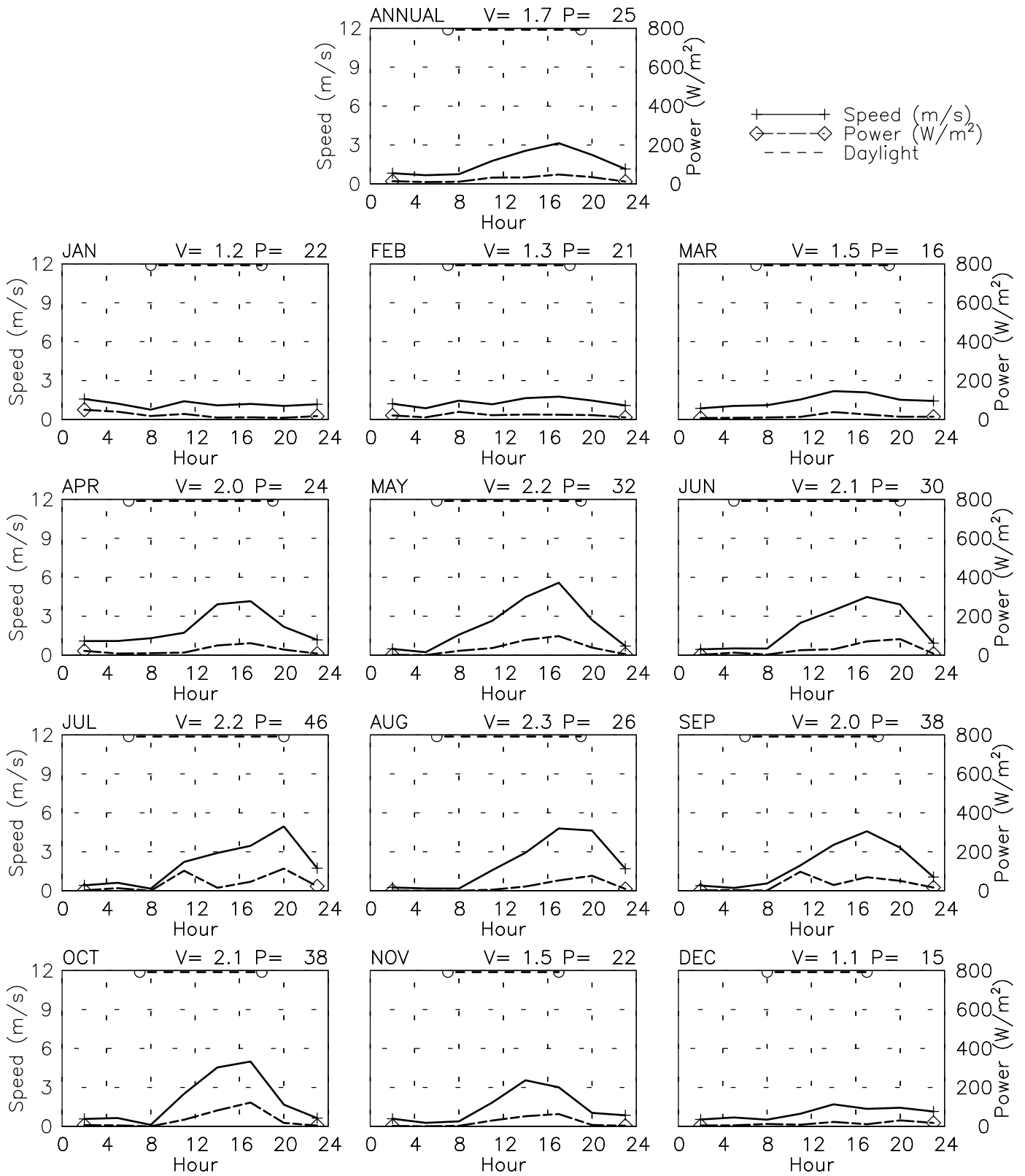
LAL AF - 409440  
34° 30' N 66° 18' E - Elev 2800m \*LST=GMT +5 hours NT= +4  
02/73-04/79



Month  
Tue Aug 8 17:05:23 2006

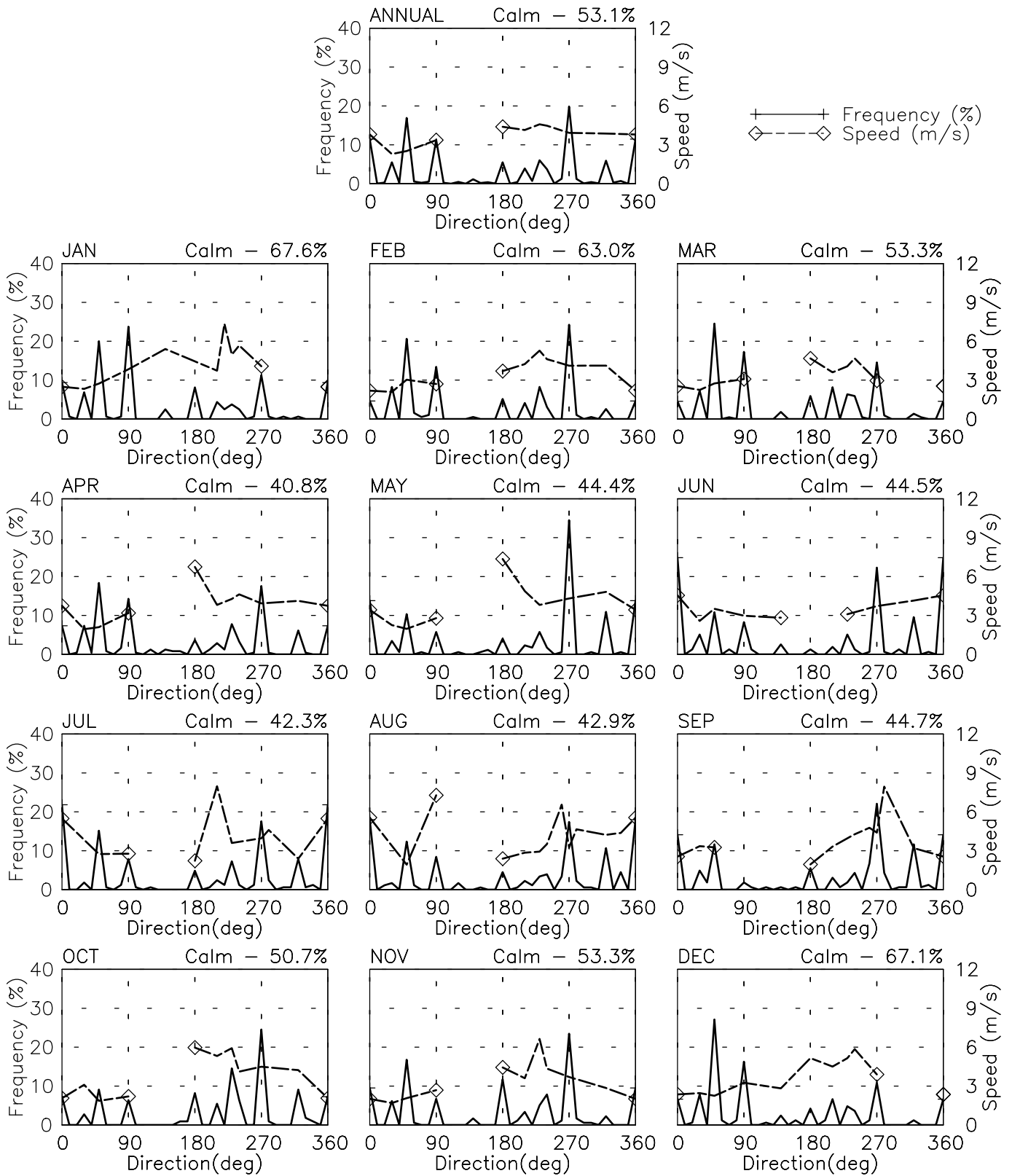
# SPEED AND POWER BY HOUR

LAL AF - 409440  
 34° 30' N 66° 18' E - Elev 2800m \*LST=GMT +5 hours NT= +4  
 02/73-04/79



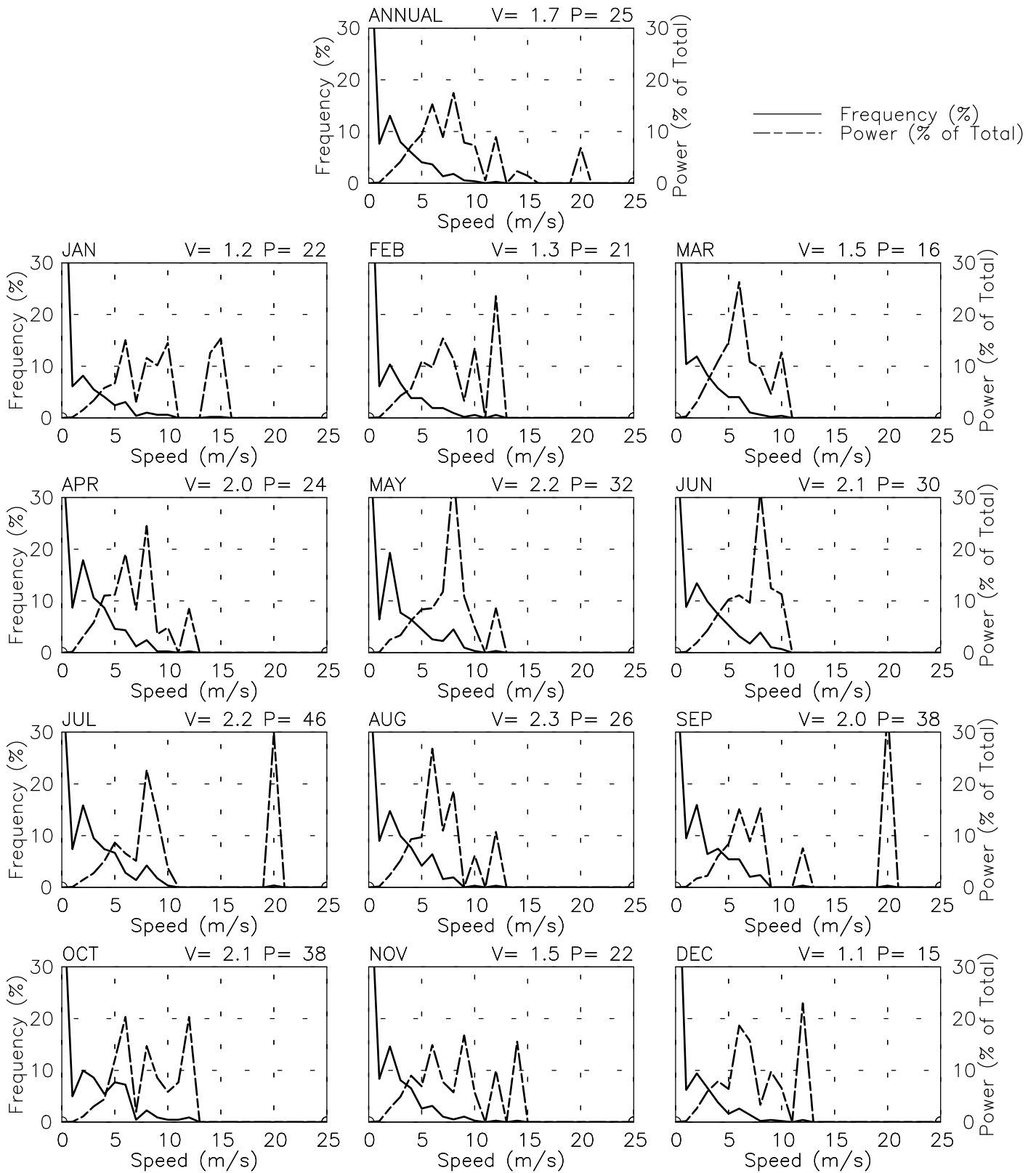
# FREQUENCY AND SPEED BY DIRECTION

LAL AF - 409440  
 34° 30' N 66° 18' E - Elev 2800m \*LST=GMT +5 hours NT= +4  
 02/73-04/79



# FREQUENCY OF SPEED & PERCENT OF POWER BY SPEED

LAL AF - 409440  
 34° 30' N 66° 18' E - Elev 2800m \*LST=GMT +5 hours NT= +4  
 02/73-04/79



# PREVAILING DIRECTION & SPEED BY HOUR

LAL AF - 409440  
 34° 30' N 66° 18' E - Elev 2800m \*LST=GMT +5 hours NT= +4  
 02/73-04/79

