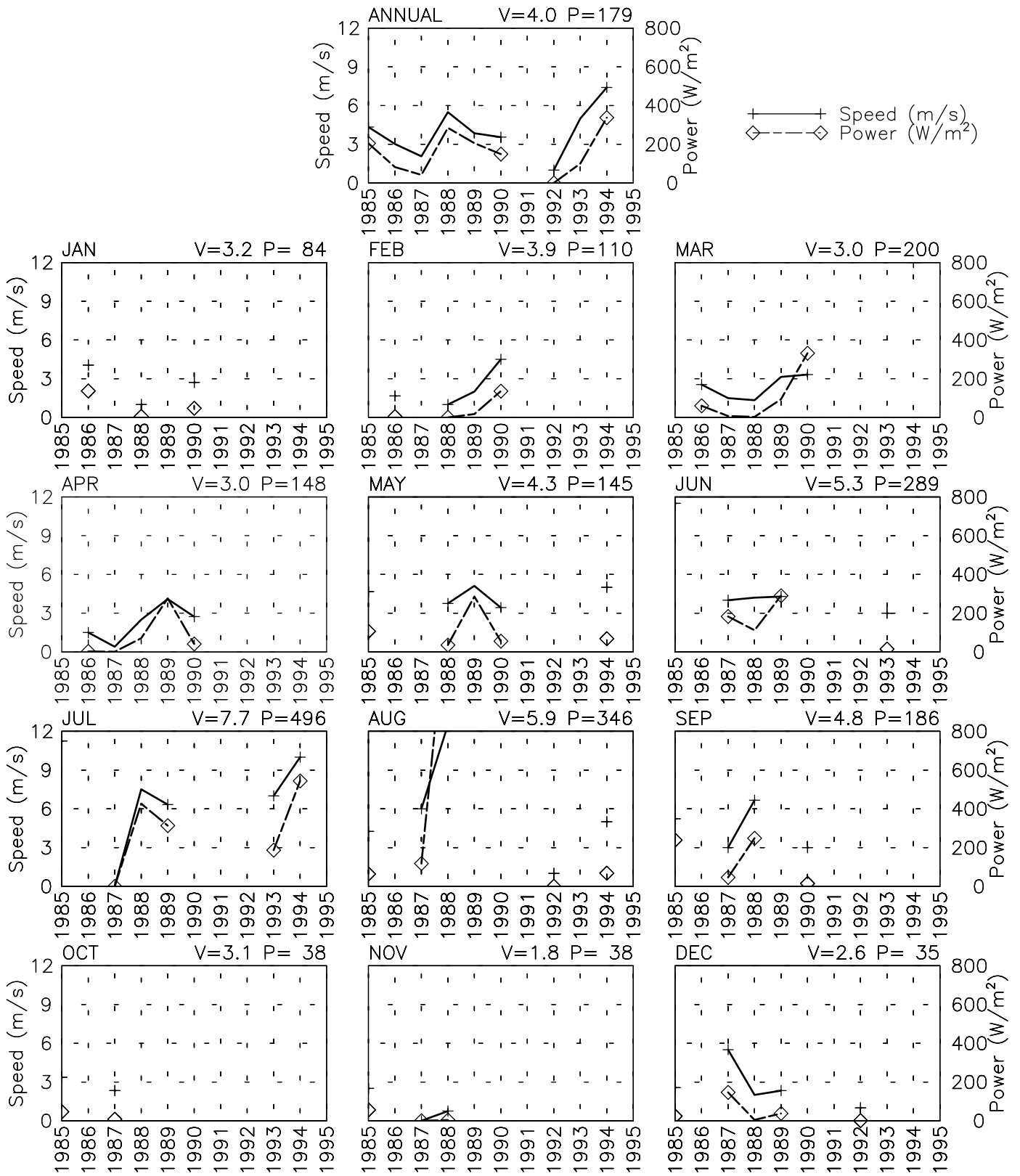


SPEED AND POWER BY YEAR

SHINDAND AF - 409570

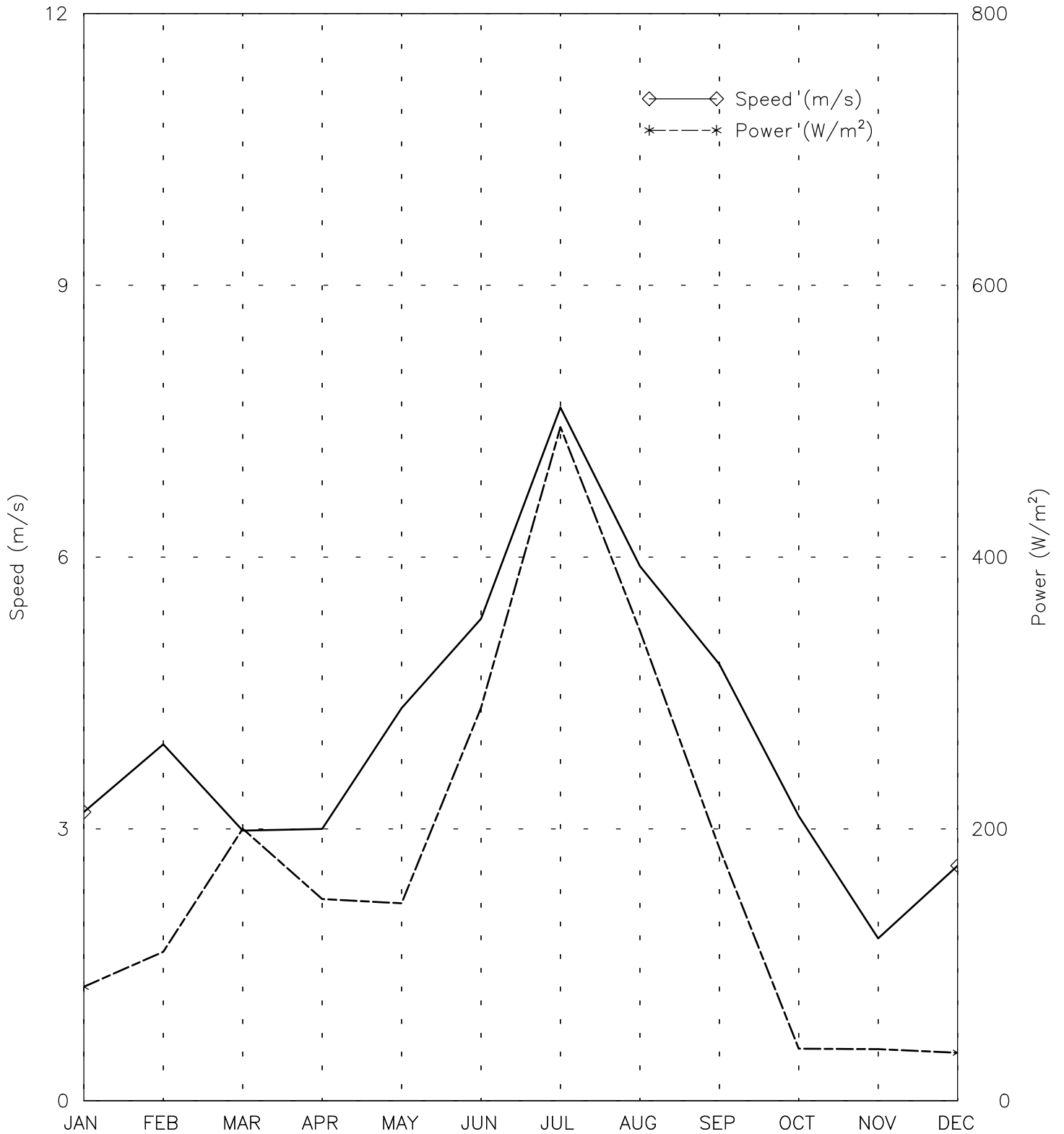
33° 24' N 62° 17' E - Elev 1150m *LST=GMT +5 hours NT= +4
05/85-09/90 08/92-08/94



SPEED AND POWER BY MONTH

SHINDAND AF - 409570

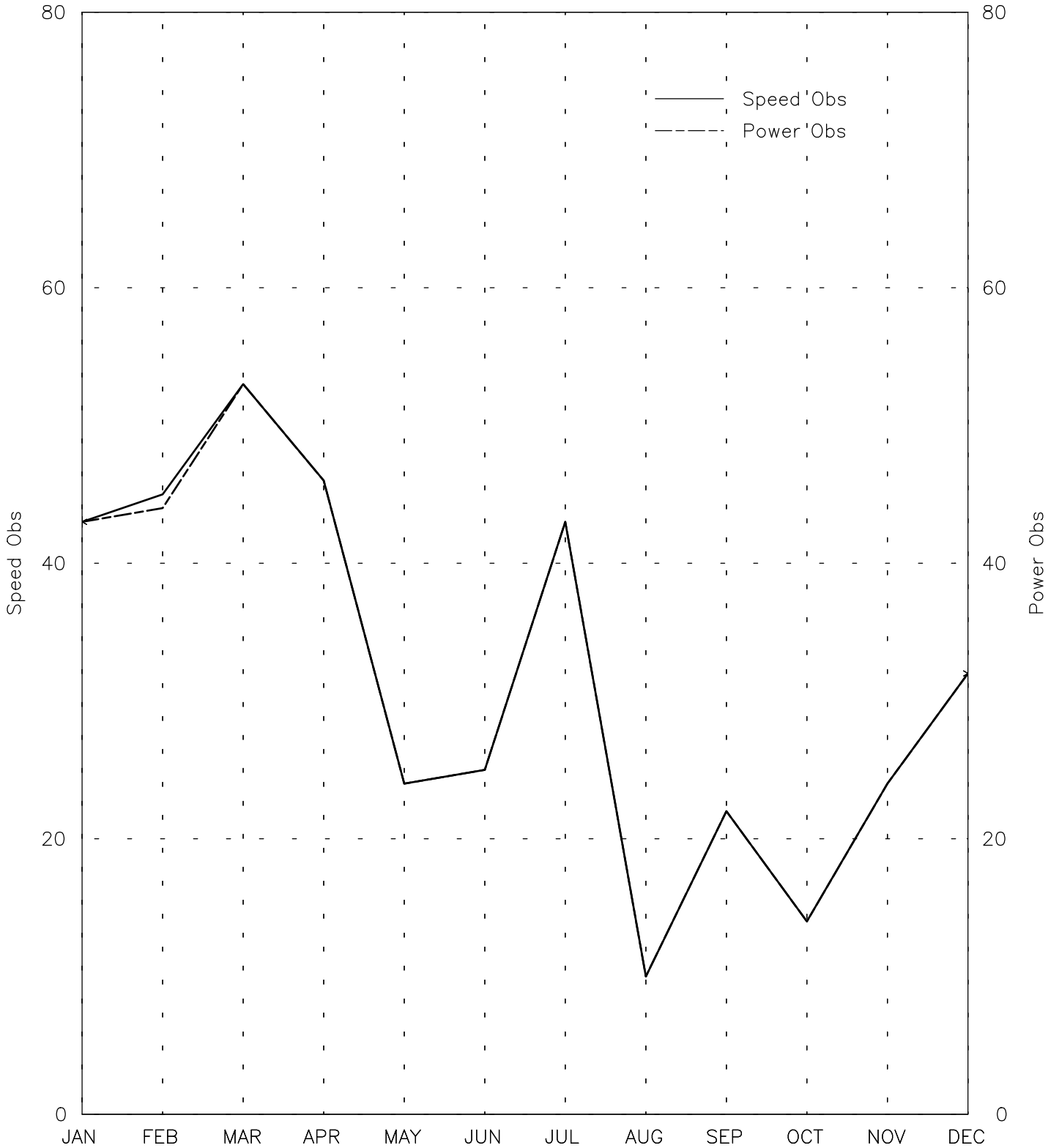
33° 24' N 62° 17' E - Elev 1150m *LST=GMT +5 hours NT= +4
05/85-09/90 08/92-08/94



OBSERVATIONS BY MONTH

SHINDAND AF - 409570

33° 24' N 62° 17' E - Elev 1150m *LST=GMT +5 hours NT= +4
05/85-09/90 08/92-08/94

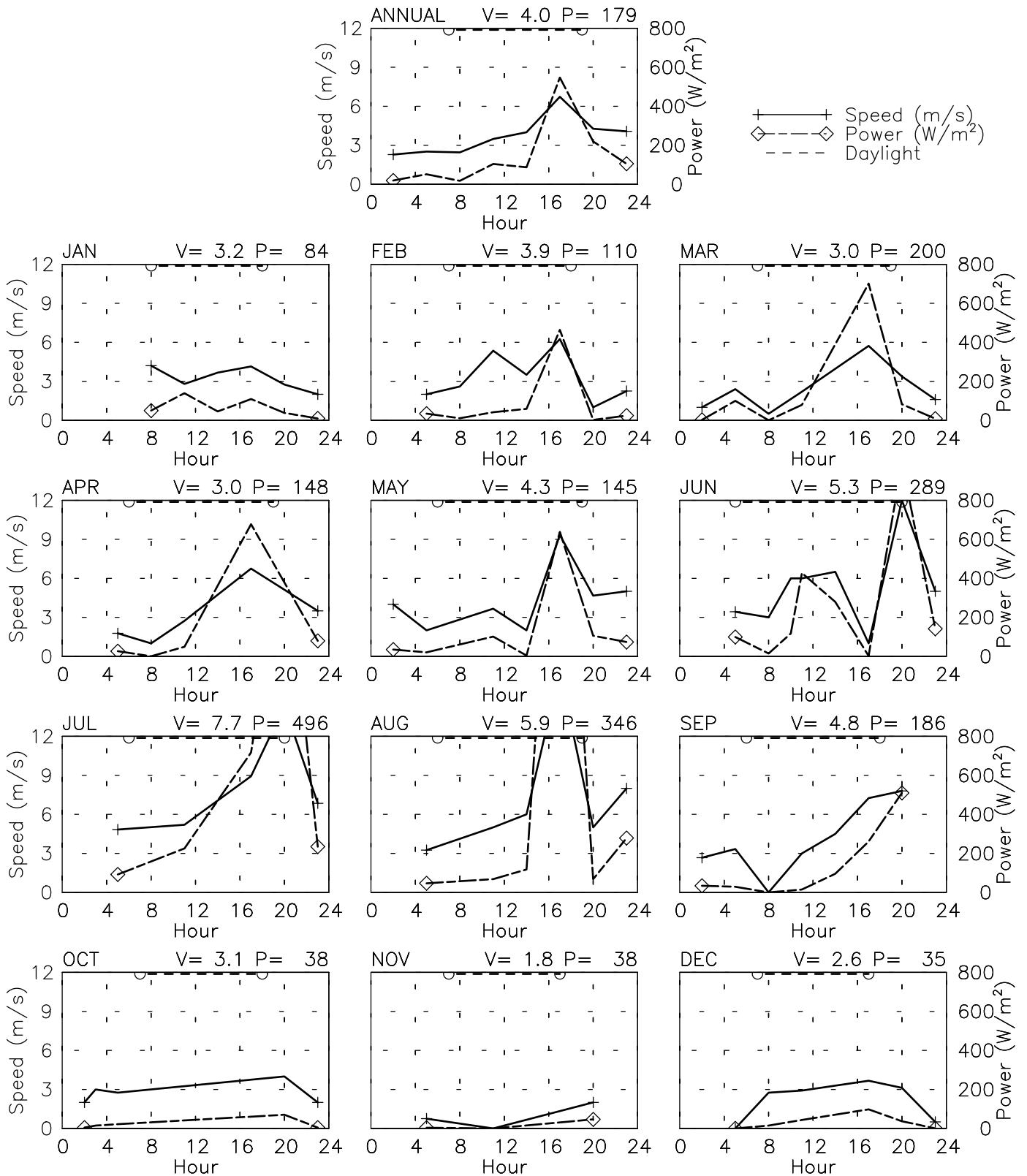


Month
Tue Aug 8 17:07:38 2006

SPEED AND POWER BY HOUR

SHINDAND AF - 409570

33° 24' N 62° 17' E - Elev 1150m *LST=GMT +5 hours NT= +4
 05/85-09/90 08/92-08/94

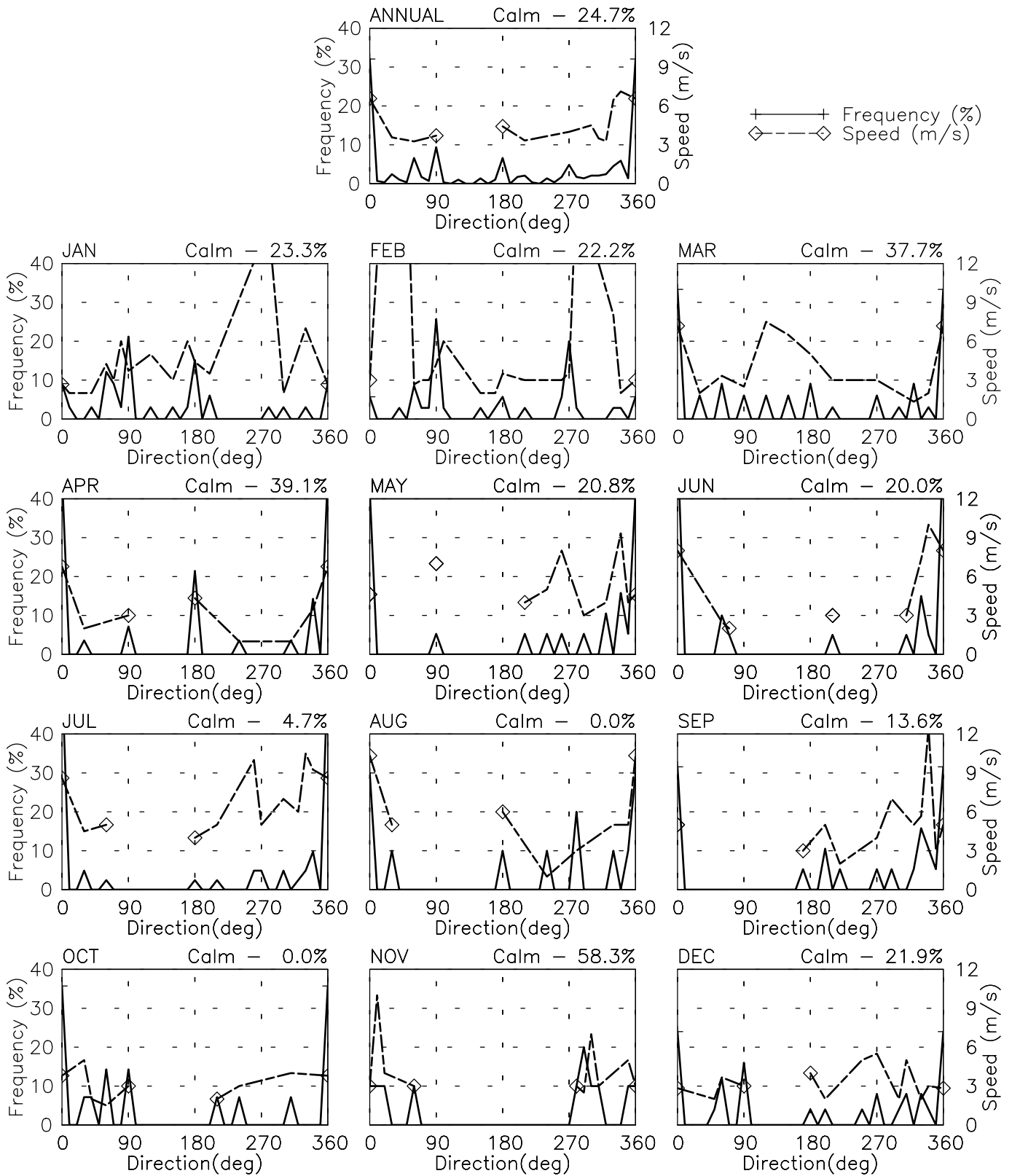


FREQUENCY AND SPEED BY DIRECTION

SHINDAND AF - 409570

33° 24' N 62° 17' E - Elev 1150m *LST=GMT +5 hours NT= +4

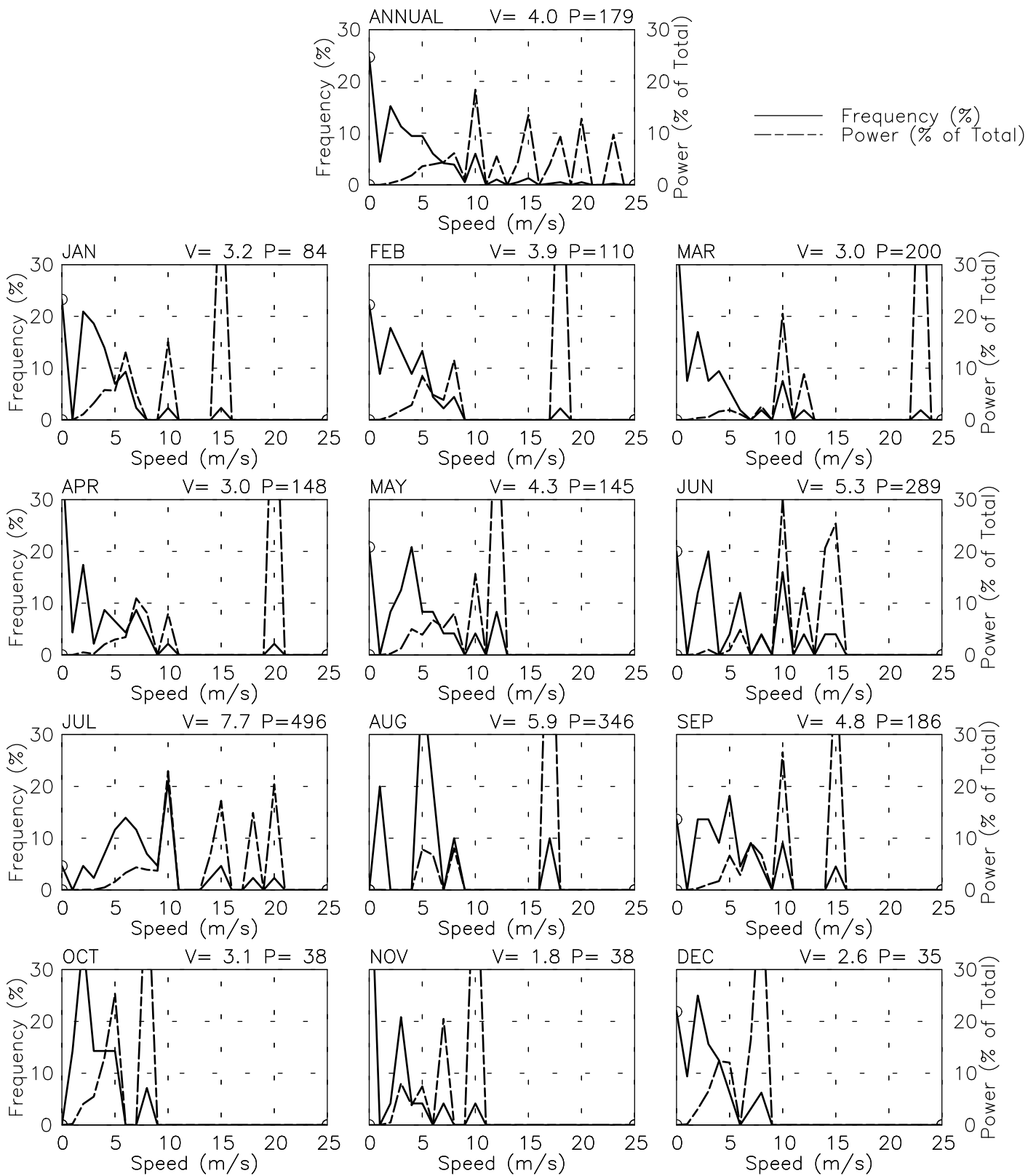
05/85-09/90 08/92-08/94



FREQUENCY OF SPEED & PERCENT OF POWER BY SPEED

SHINDAND AF - 409570

33° 24' N 62° 17' E - Elev 1150m *LST=GMT +5 hours NT= +4
 05/85-09/90 08/92-08/94



PREVAILING DIRECTION & SPEED BY HOUR

SHINDAND AF - 409570

33° 24' N 62° 17' E - Elev 1150m *LST=GMT +5 hours NT= +4
 05/85-09/90 08/92-08/94

