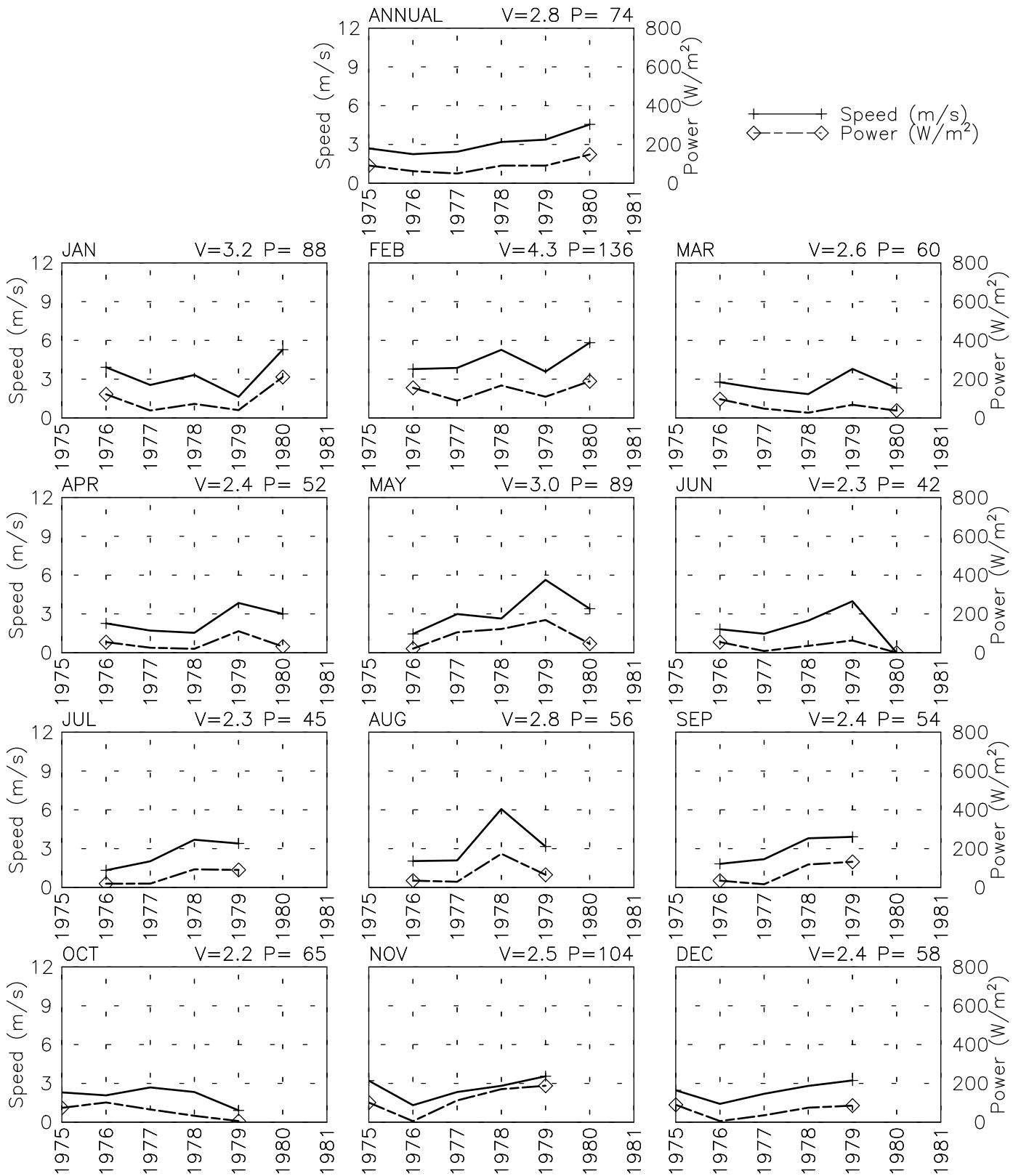


SPEED AND POWER BY YEAR

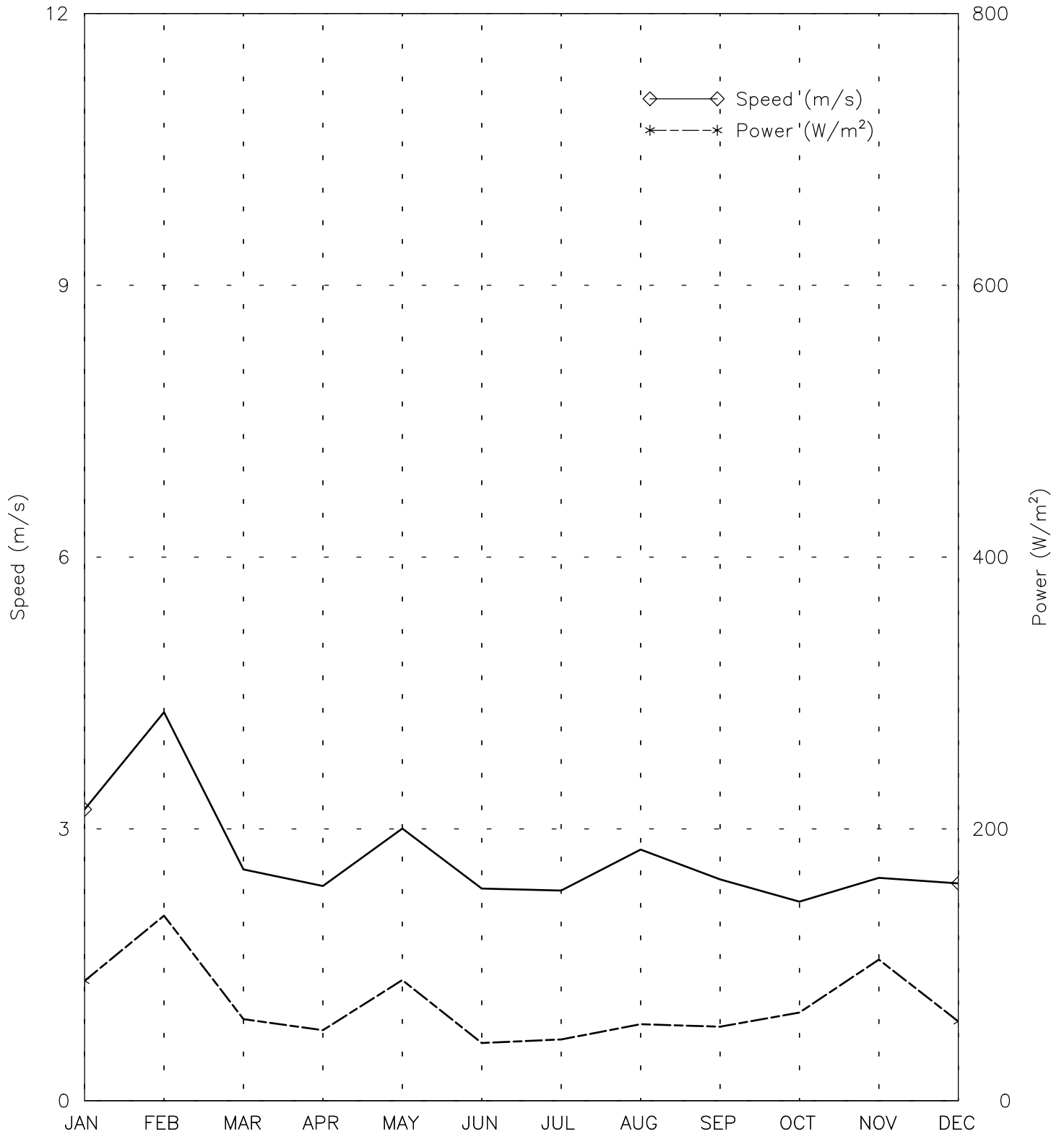
KALAT AF - 409790

32° 07' N 66° 54' E - Elev 1565m *LST=GMT +5 hours NT= +4
10/75-06/80



SPEED AND POWER BY MONTH

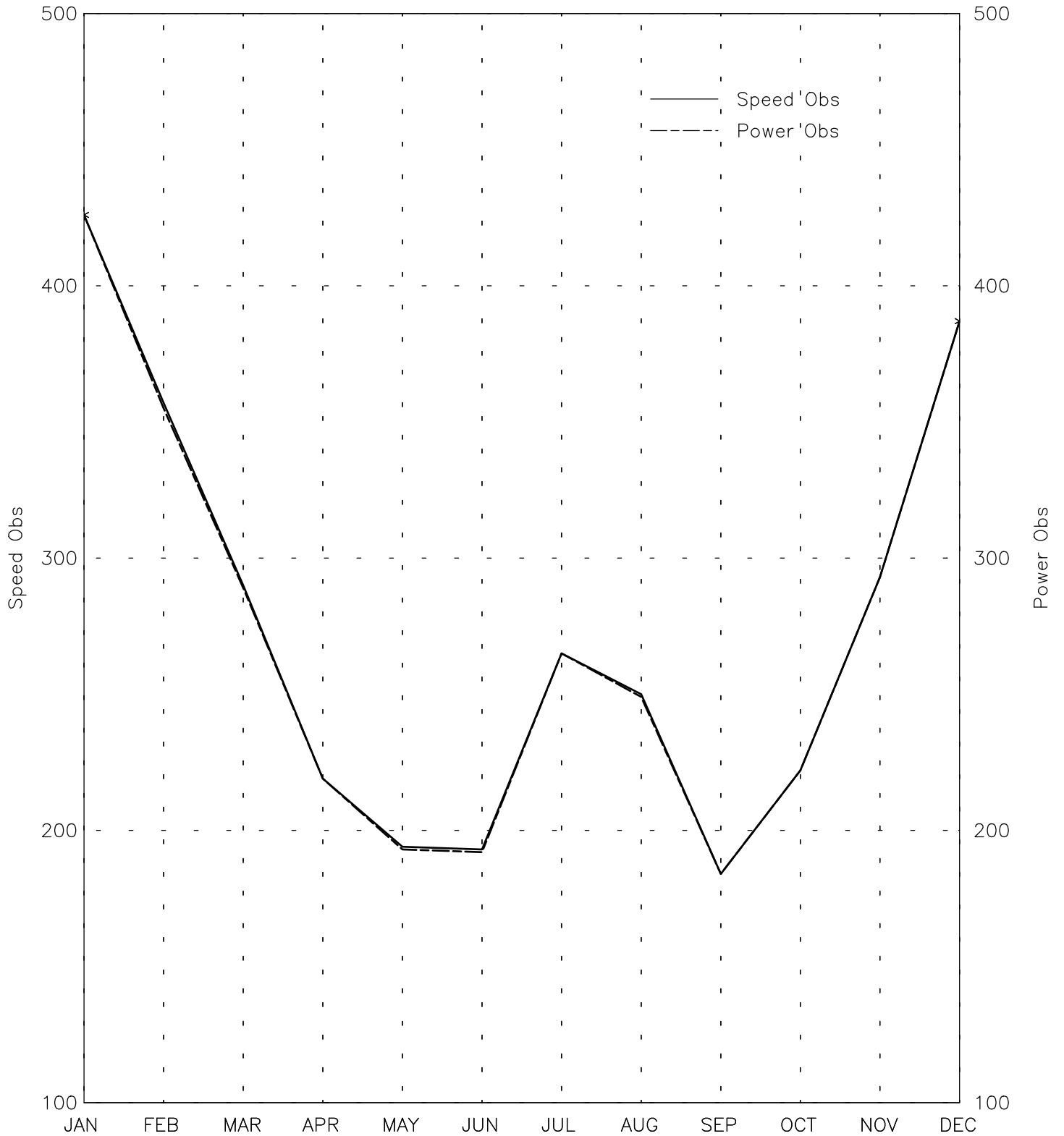
KALAT AF - 409790
32° 07' N 66° 54' E - Elev 1565m *LST=GMT +5 hours NT= +4
10/75-06/80



Month
Tue Aug 8 17:05:54 2006

OBSERVATIONS BY MONTH

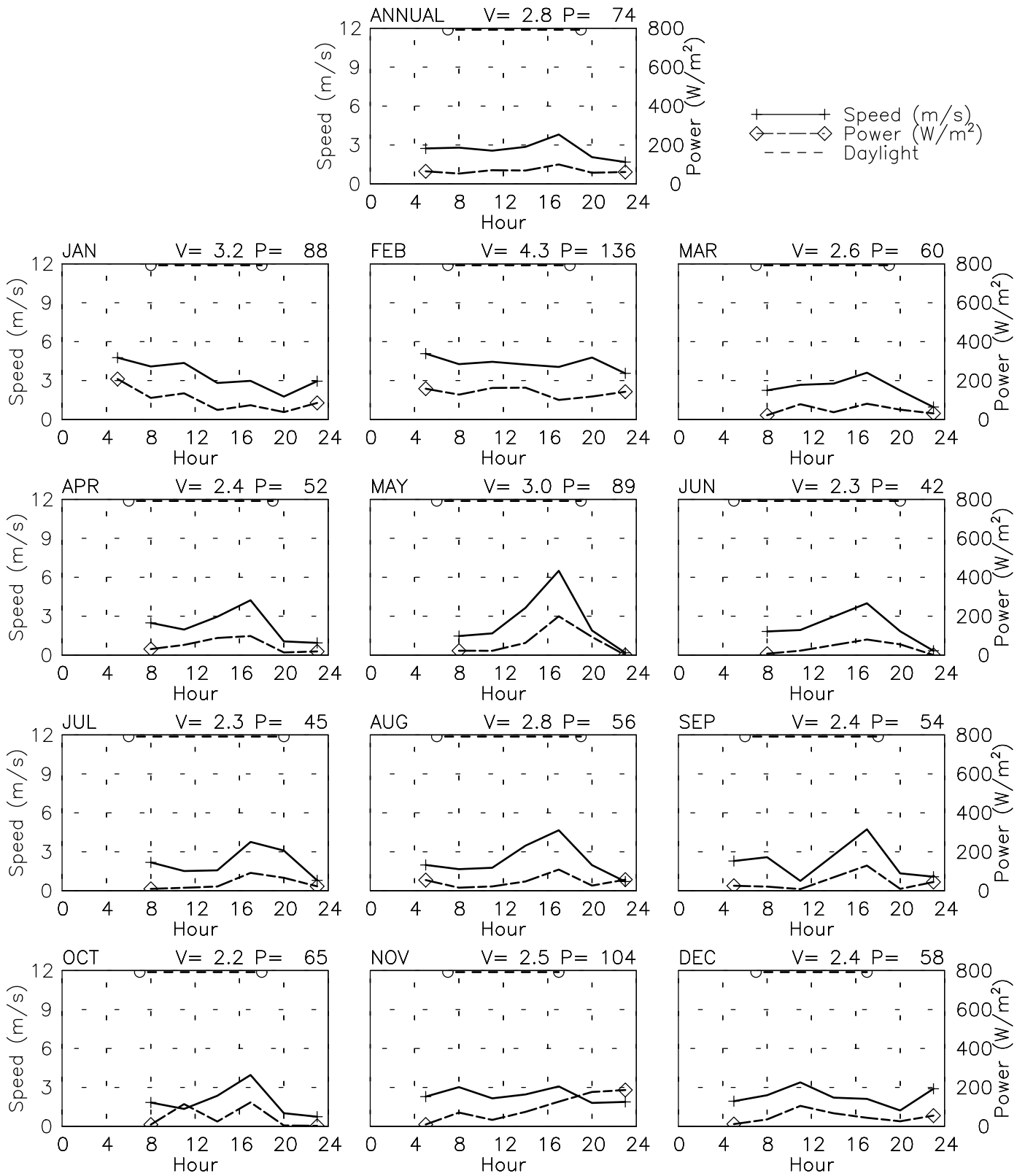
KALAT AF - 409790
32° 07' N 66° 54' E - Elev 1565m *LST=GMT +5 hours NT= +4
10/75-06/80



Month
Tue Aug 8 17:05:54 2006

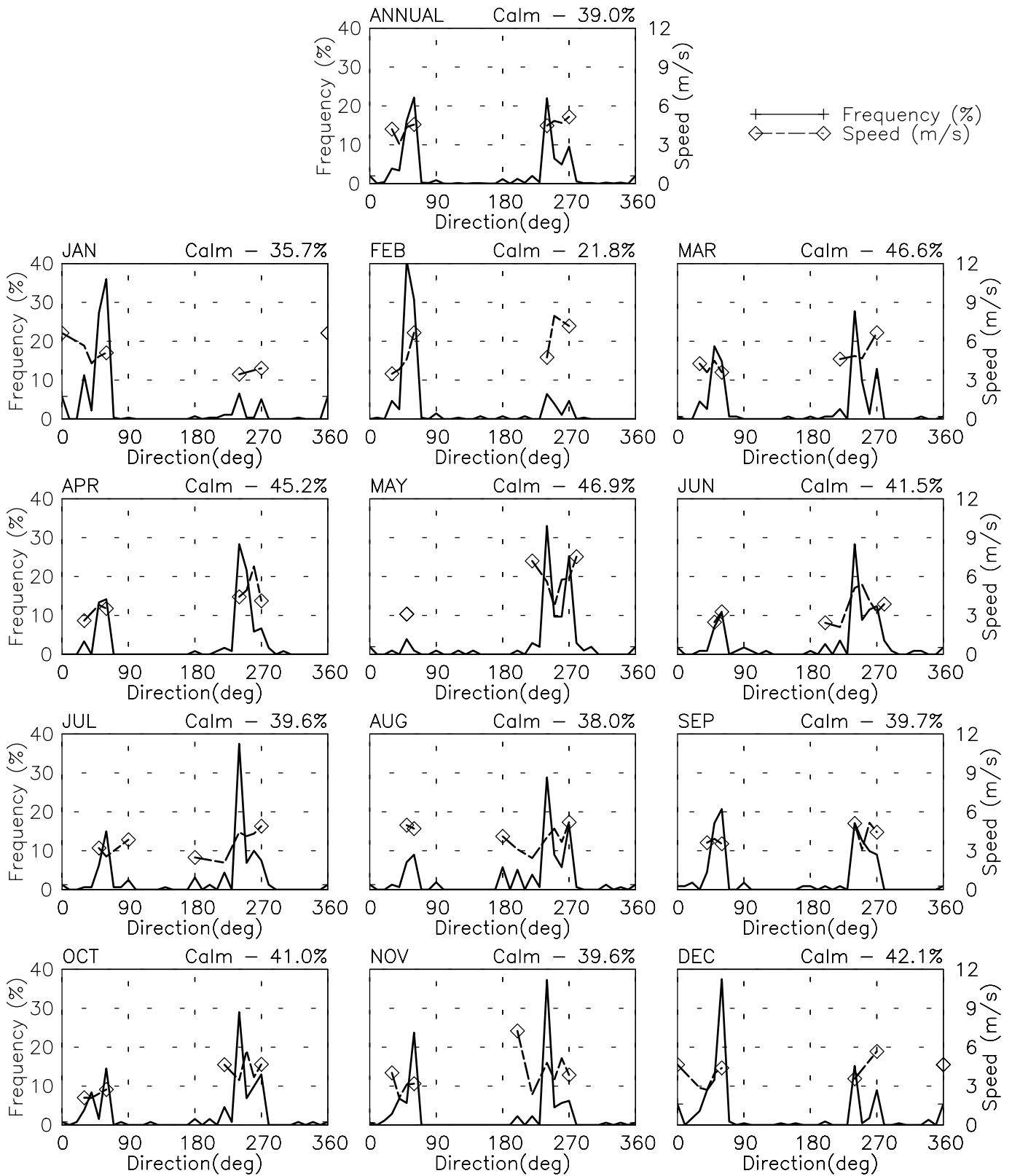
SPEED AND POWER BY HOUR

KALAT AF - 409790
 32° 07' N 66° 54' E - Elev 1565m *LST=GMT +5 hours NT= +4
 10/75-06/80



FREQUENCY AND SPEED BY DIRECTION

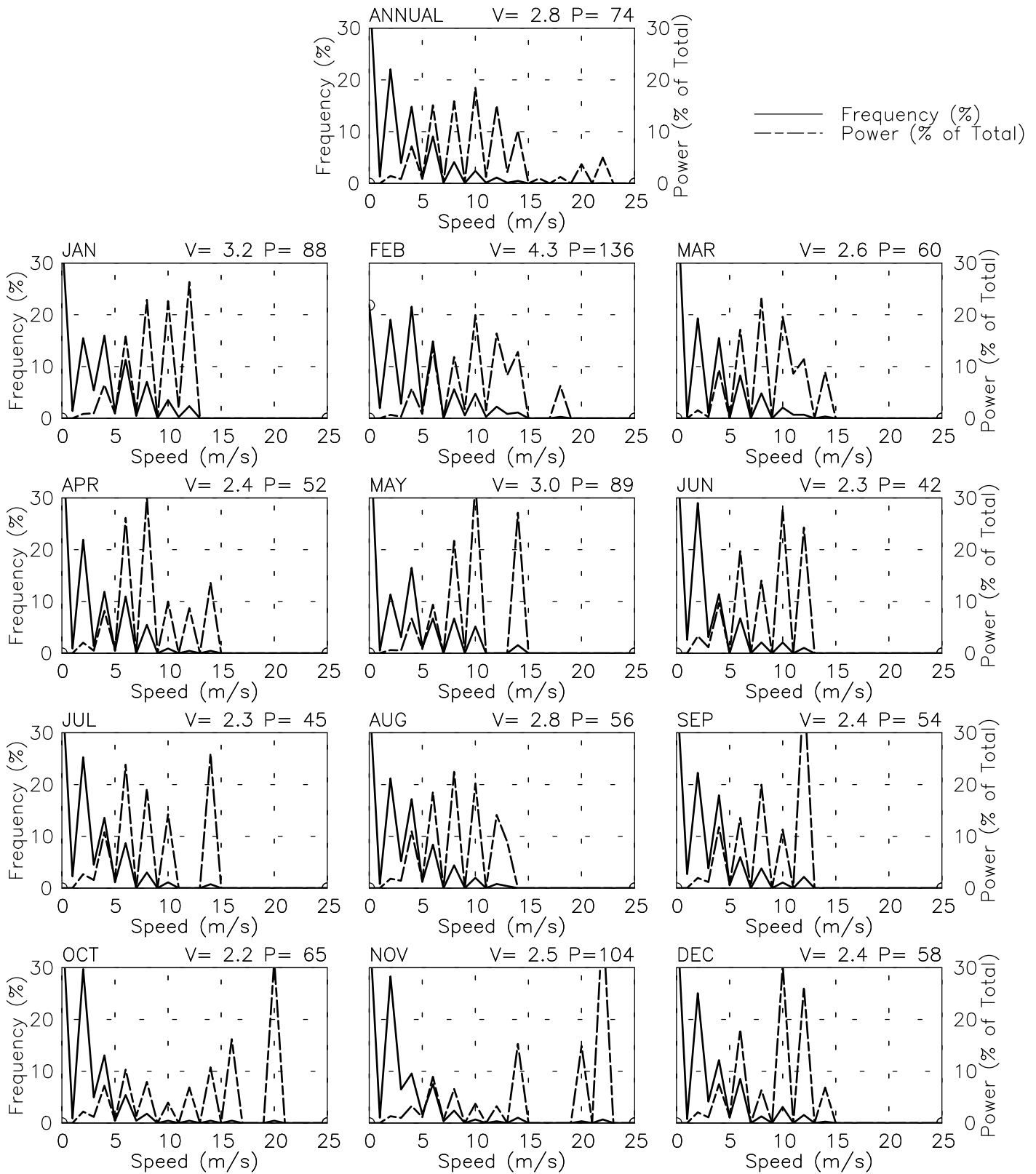
KALAT AF - 409790
 32° 07' N 66° 54' E - Elev 1565m *LST=GMT +5 hours NT= +4
 10/75-06/80



FREQUENCY OF SPEED & PERCENT OF POWER BY SPEED

KALAT AF - 409790

32° 07' N 66° 54' E - Elev 1565m *LST=GMT +5 hours NT= +4
10/75-06/80



PREVAILING DIRECTION & SPEED BY HOUR

KALAT AF - 409790

32° 07' N 66° 54' E - Elev 1565m *LST=GMT +5 hours NT= +4
10/75-06/80

