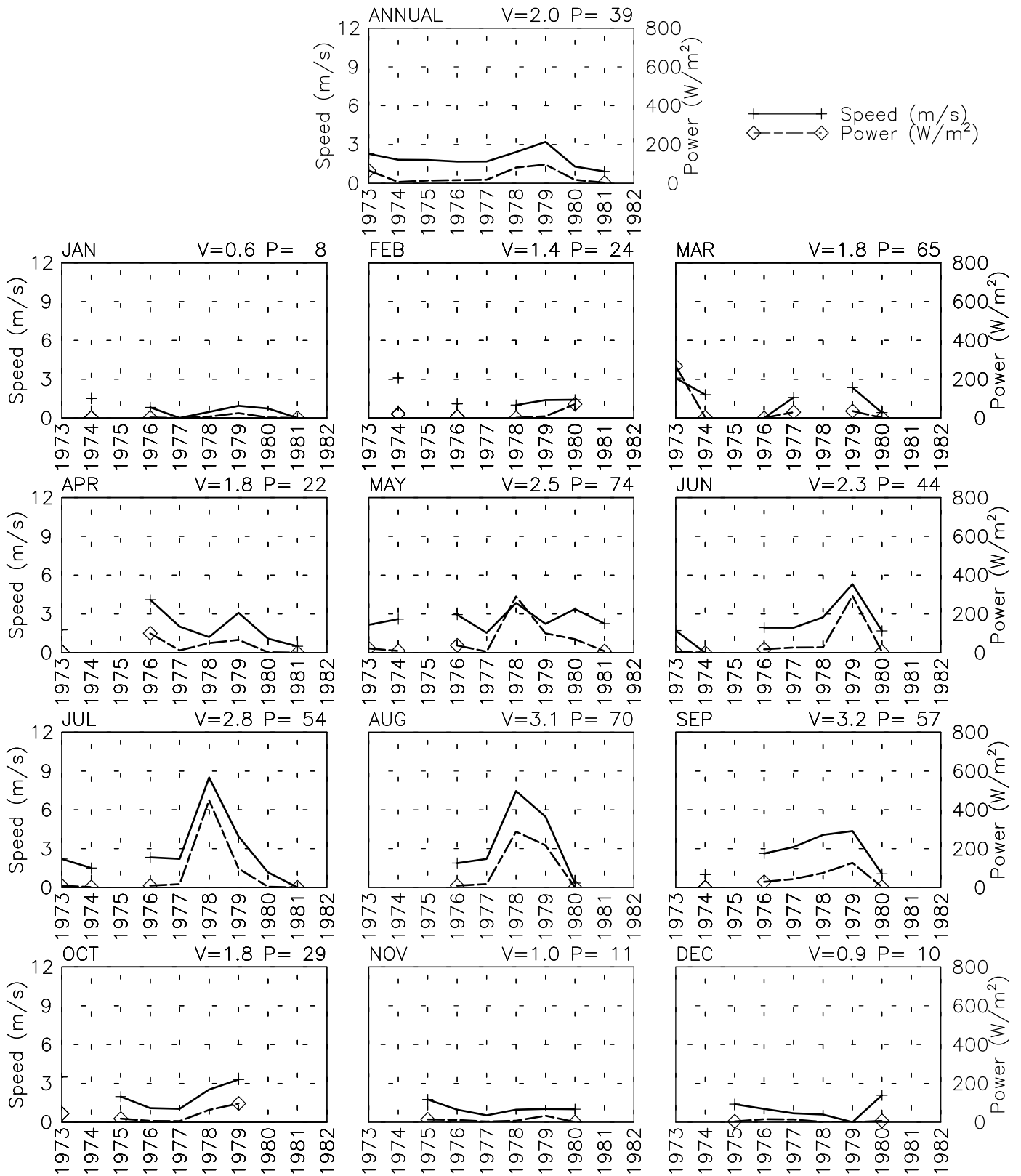


# SPEED AND POWER BY YEAR

DARWAZ AF - 409000

38° 26' N 70° 48' E - Elev 1320m \*LST=GMT +5 hours NT= +5  
03/73-07/81

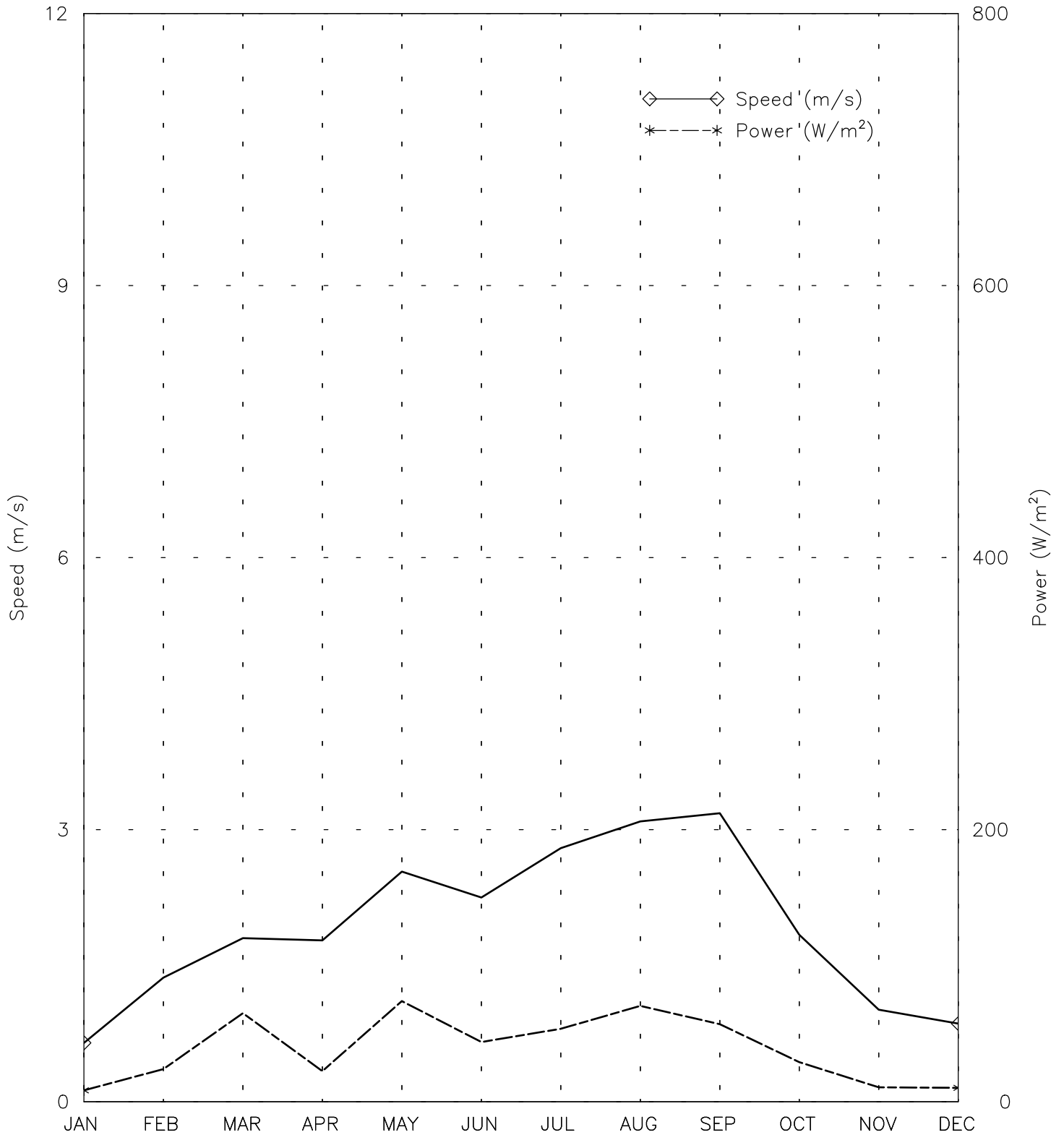


# SPEED AND POWER BY MONTH

DARWAZ

AF - 409000

38° 26' N 70° 48' E - Elev 1320m \*LST=GMT +5 hours NT= +5  
03/73-07/81



Month

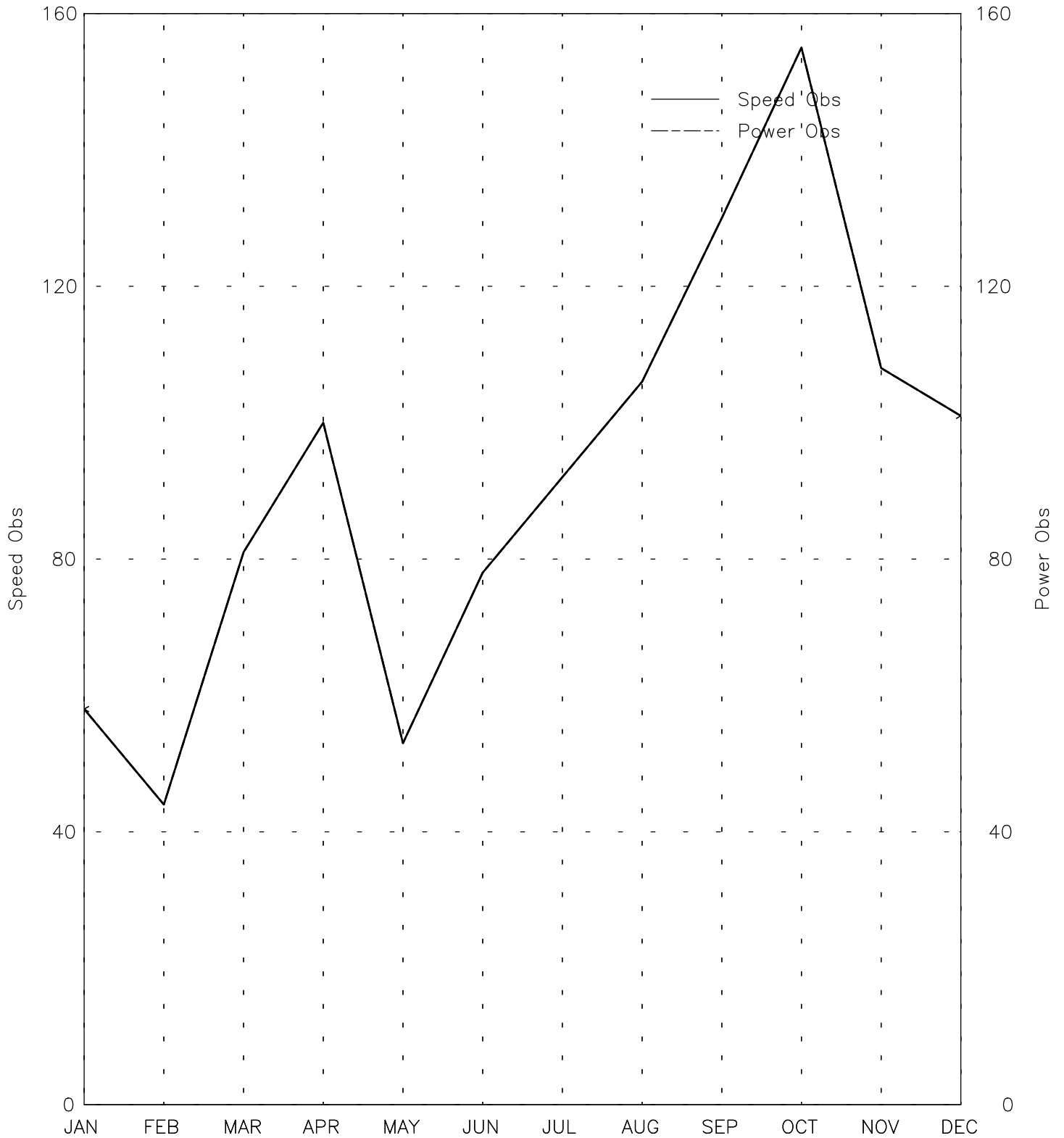
Tue Aug 8 17:07:18 2006

# OBSERVATIONS BY MONTH

DARWAZ

AF - 409000

38° 26' N 70° 48' E - Elev 1320m \*LST=GMT +5 hours NT= +5  
03/73-07/81

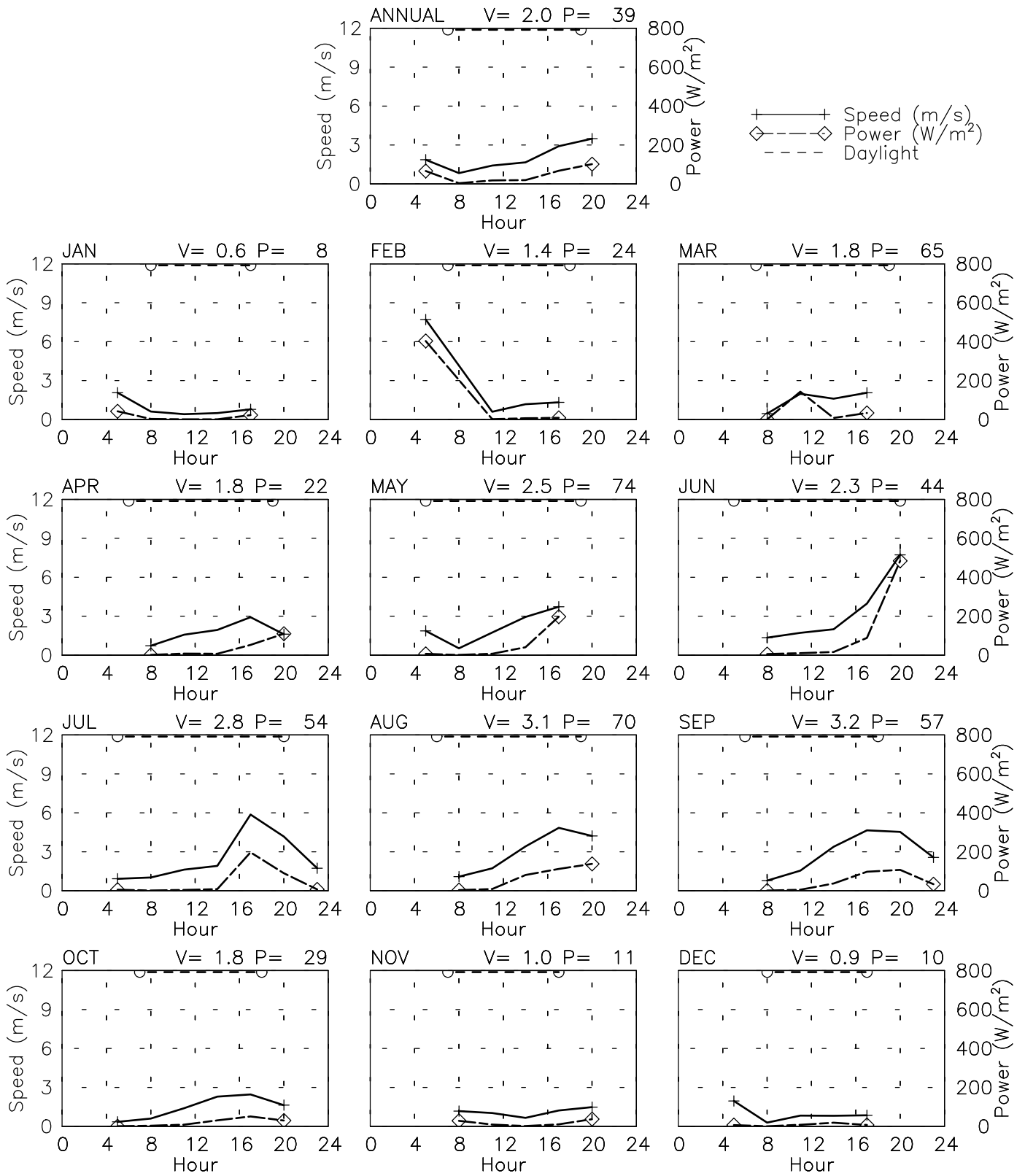


Month  
Tue Aug 8 17:07:18 2006

# SPEED AND POWER BY HOUR

DARWAZ AF - 409000

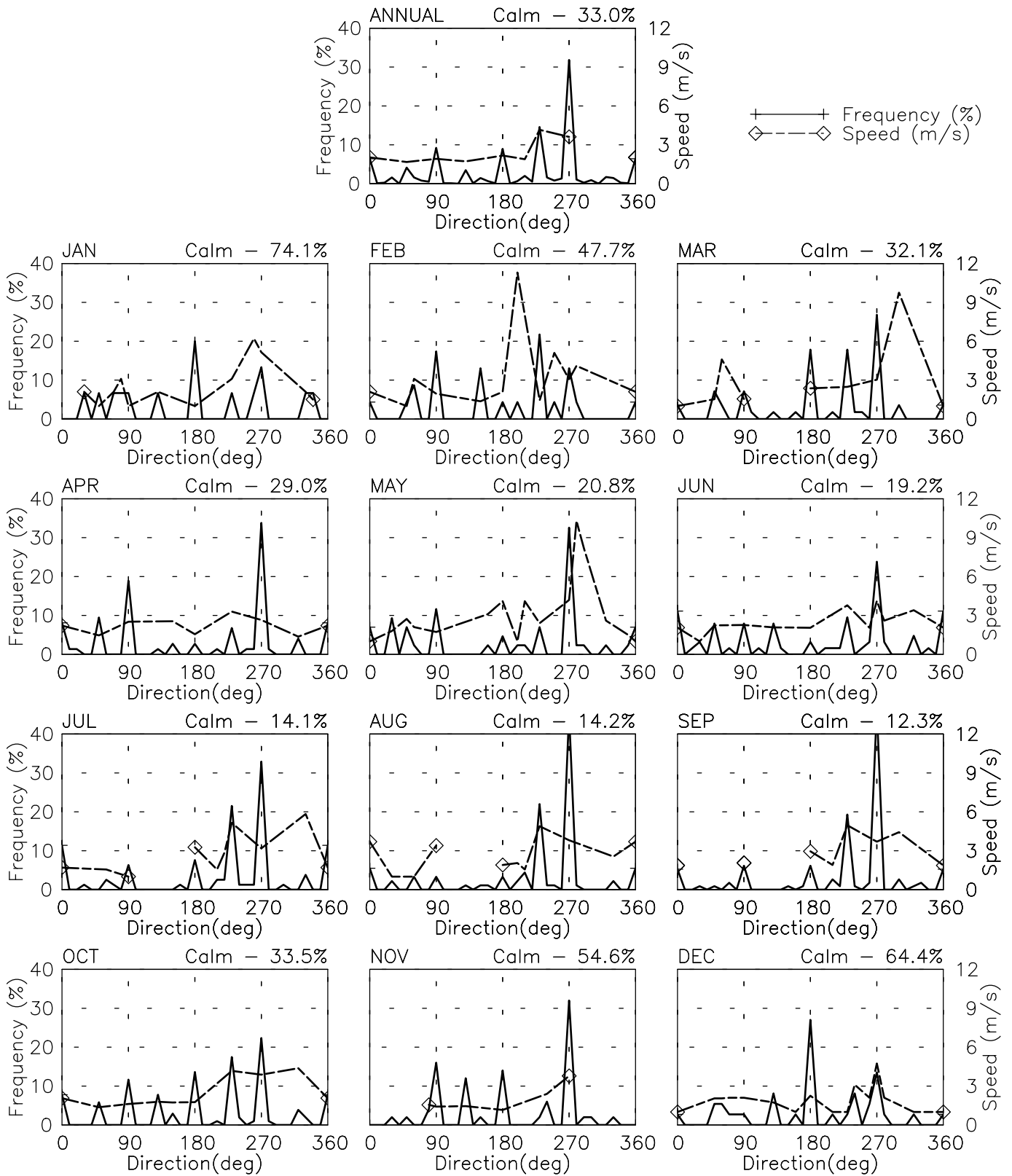
38° 26' N 70° 48' E - Elev 1320m \*LST=GMT +5 hours NT= +5  
03/73-07/81



# FREQUENCY AND SPEED BY DIRECTION

DARWAZ AF - 409000

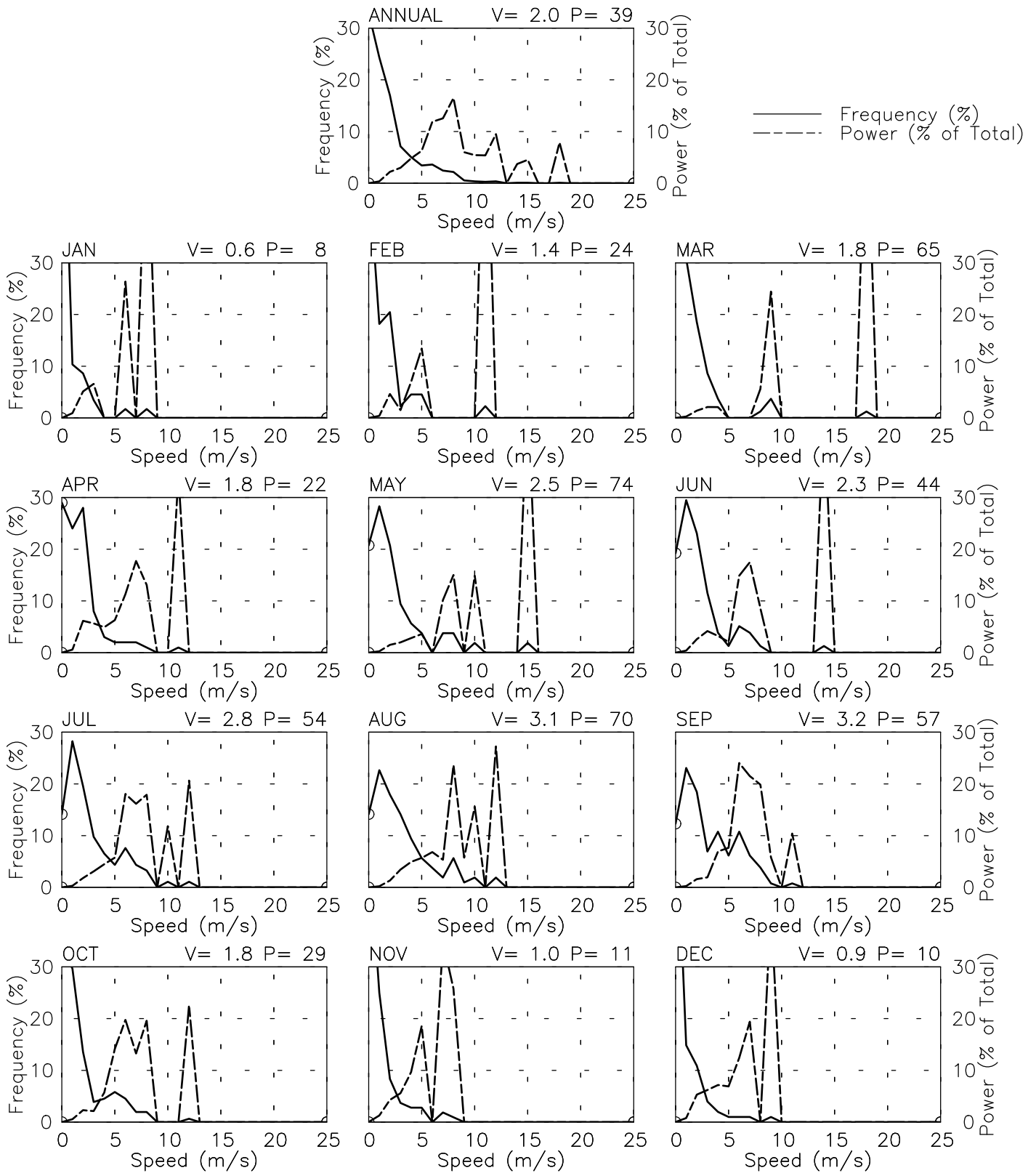
38° 26' N 70° 48' E - Elev 1320m \*LST=GMT +5 hours NT= +5  
03/73-07/81



# FREQUENCY OF SPEED & PERCENT OF POWER BY SPEED

DARWAZ AF - 409000

38° 26' N 70° 48' E - Elev 1320m \*LST=GMT +5 hours NT= +5  
03/73-07/81



# PREVAILING DIRECTION & SPEED BY HOUR

DARWAZ AF - 409000

38° 26' N 70° 48' E - Elev 1320m \*LST=GMT +5 hours NT= +5  
03/73-07/81

