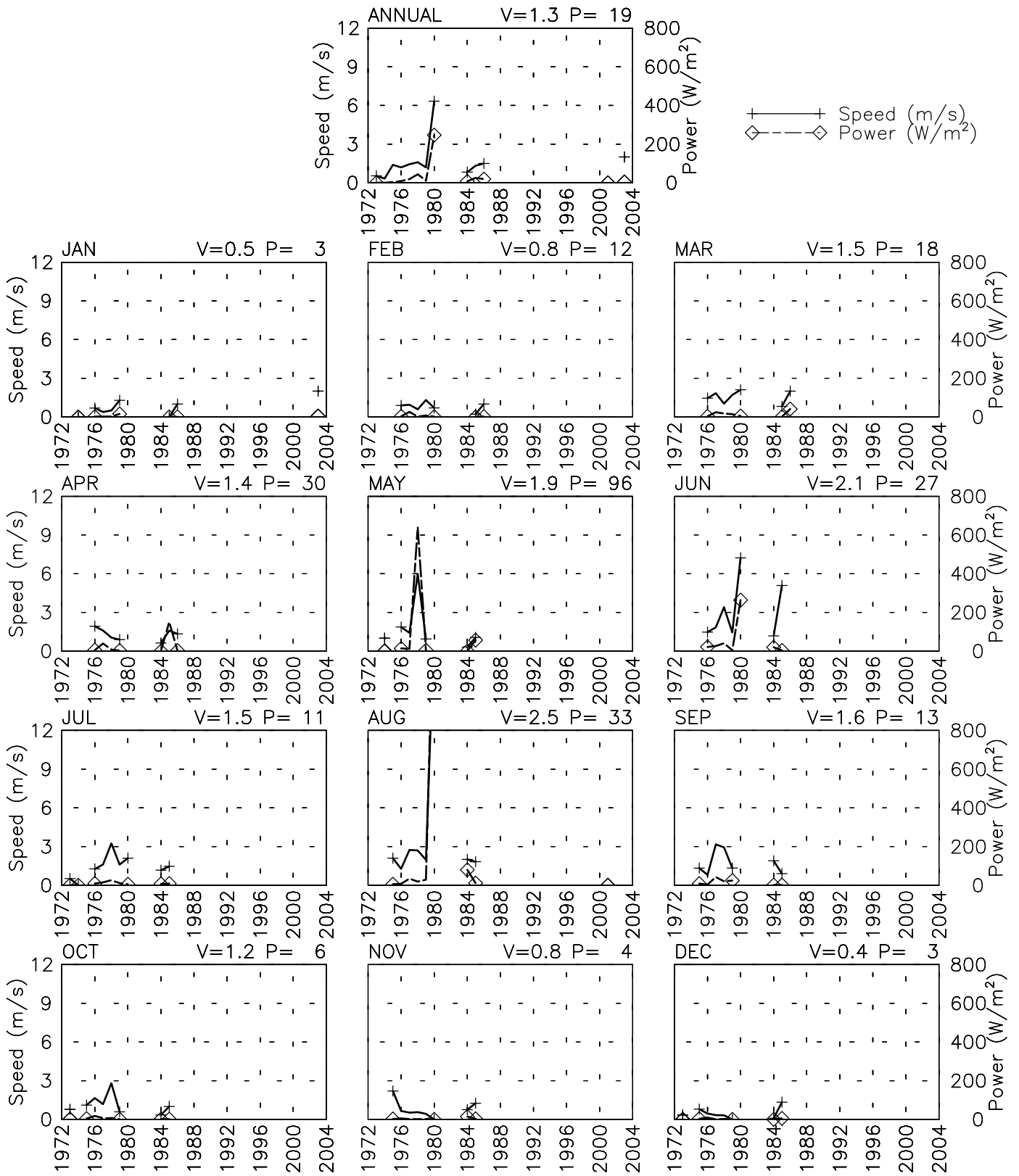


# SPEED AND POWER BY YEAR

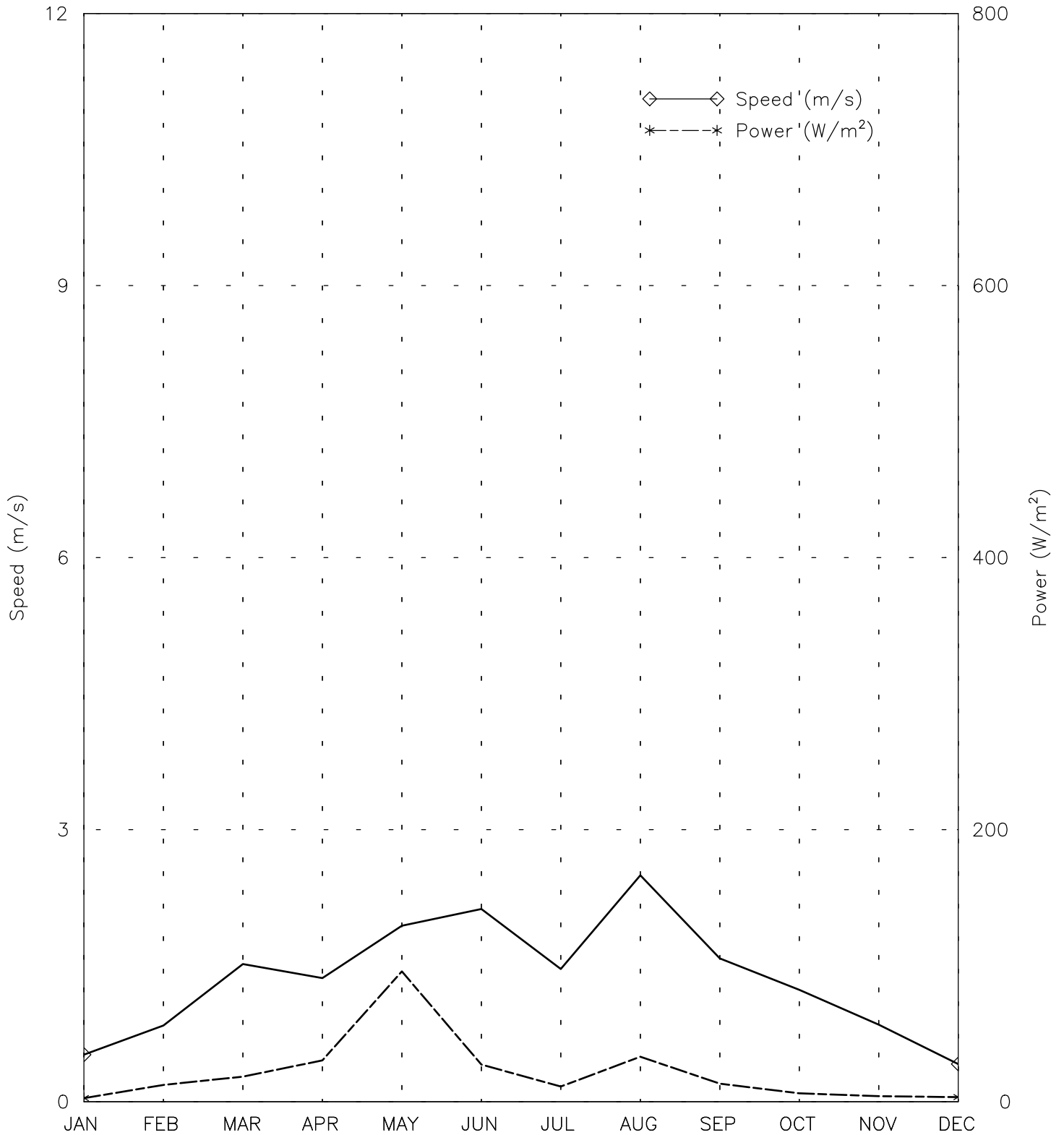
KHWAHAN AF - 409010

37° 53' N 70° 13' E - Elev 1040m \*LST=GMT +5 hours NT= +5  
 07/73-11/80 04/84-04/86 08/01-08/01 01/03-01/03



# SPEED AND POWER BY MONTH

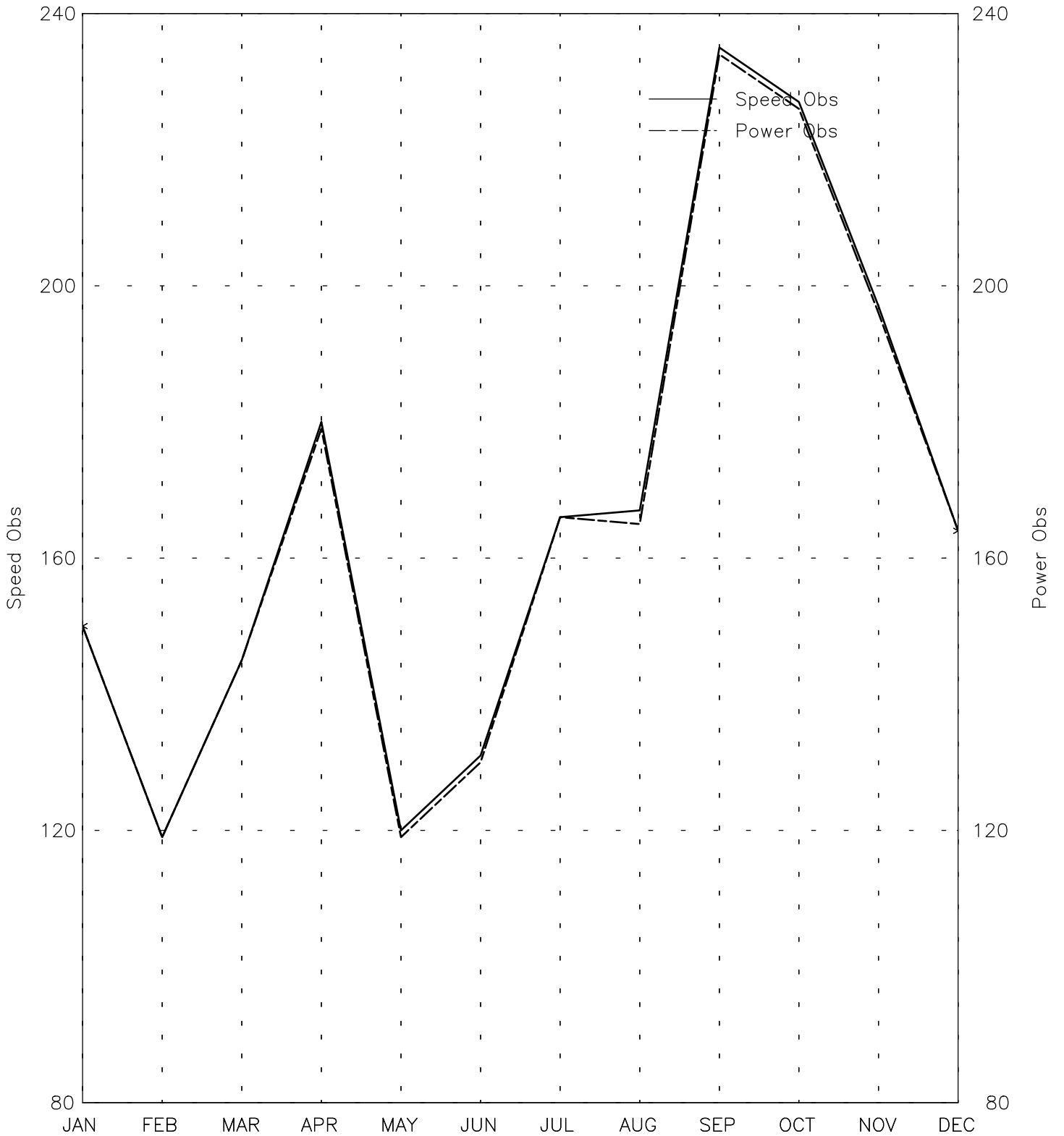
KHWAHAN AF - 409010  
37° 53' N 70° 13' E - Elev 1040m \*LST=GMT +5 hours NT= +5  
07/73-11/80 04/84-04/86 08/01-08/01 01/03-01/03



# OBSERVATIONS BY MONTH

KHWAHAN AF - 409010

37° 53' N 70° 13' E - Elev 1040m \*LST=GMT +5 hours NT= +5  
07/73-11/80 04/84-04/86 08/01-08/01 01/03-01/03

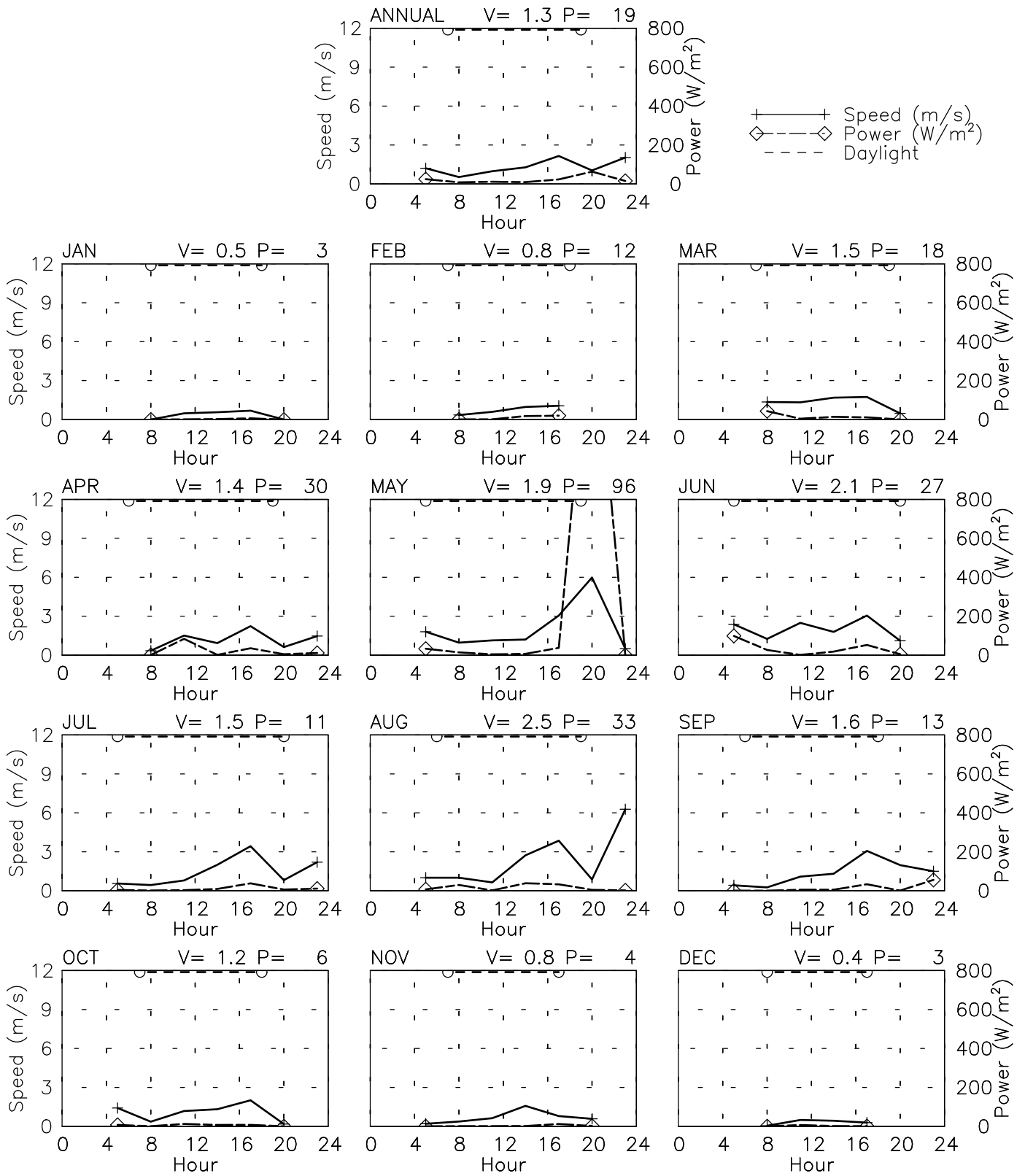


# SPEED AND POWER BY HOUR

KHWAHAN AF - 409010

37° 53' N 70° 13' E - Elev 1040m \*LST=GMT +5 hours NT= +5

07/73-11/80 04/84-04/86 08/01-08/01 01/03-01/03

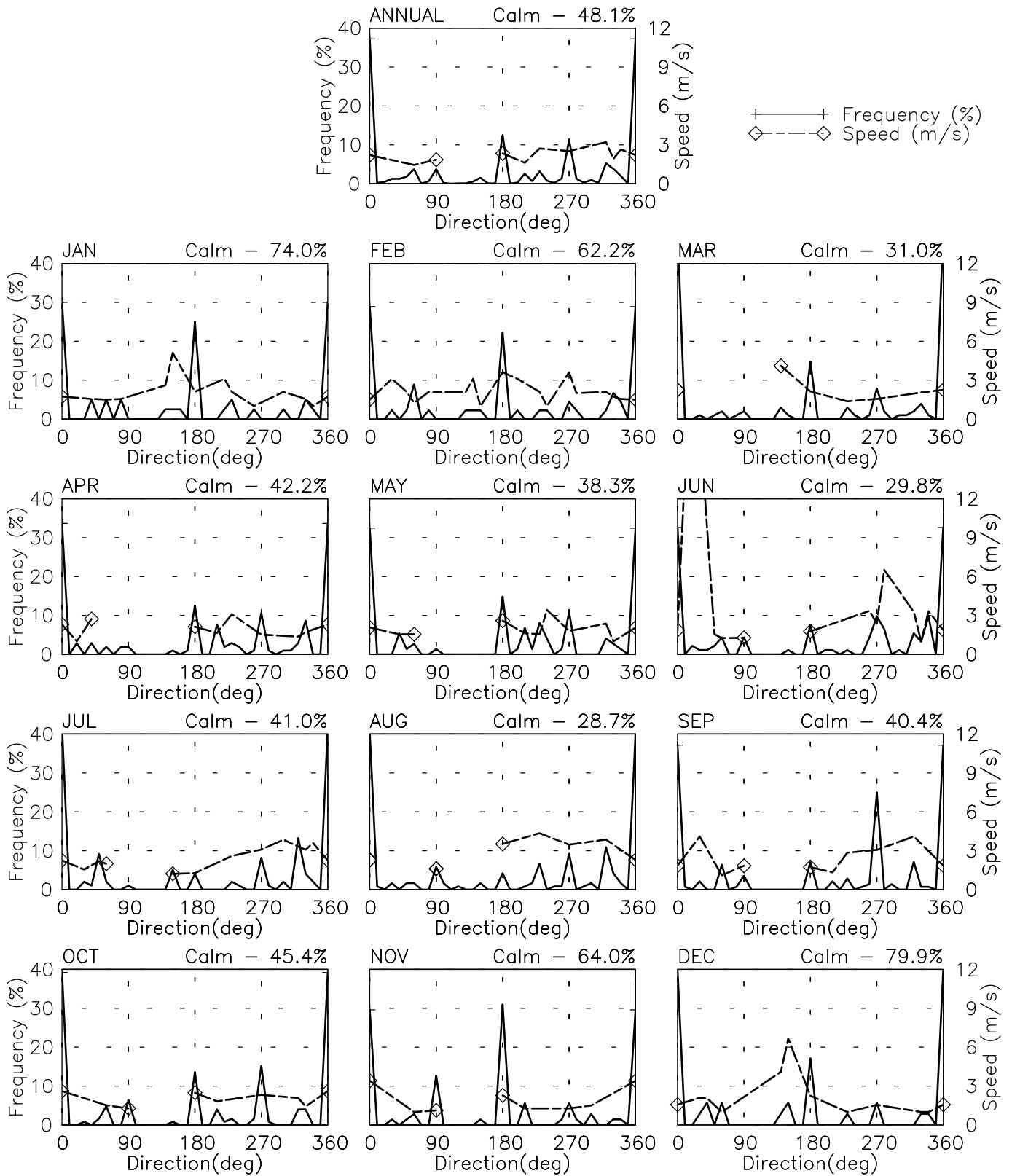


# FREQUENCY AND SPEED BY DIRECTION

KHWAHAN AF - 409010

37° 53' N 70° 13' E - Elev 1040m \*LST=GMT +5 hours NT= +5

07/73-11/80 04/84-04/86 08/01-08/01 01/03-01/03

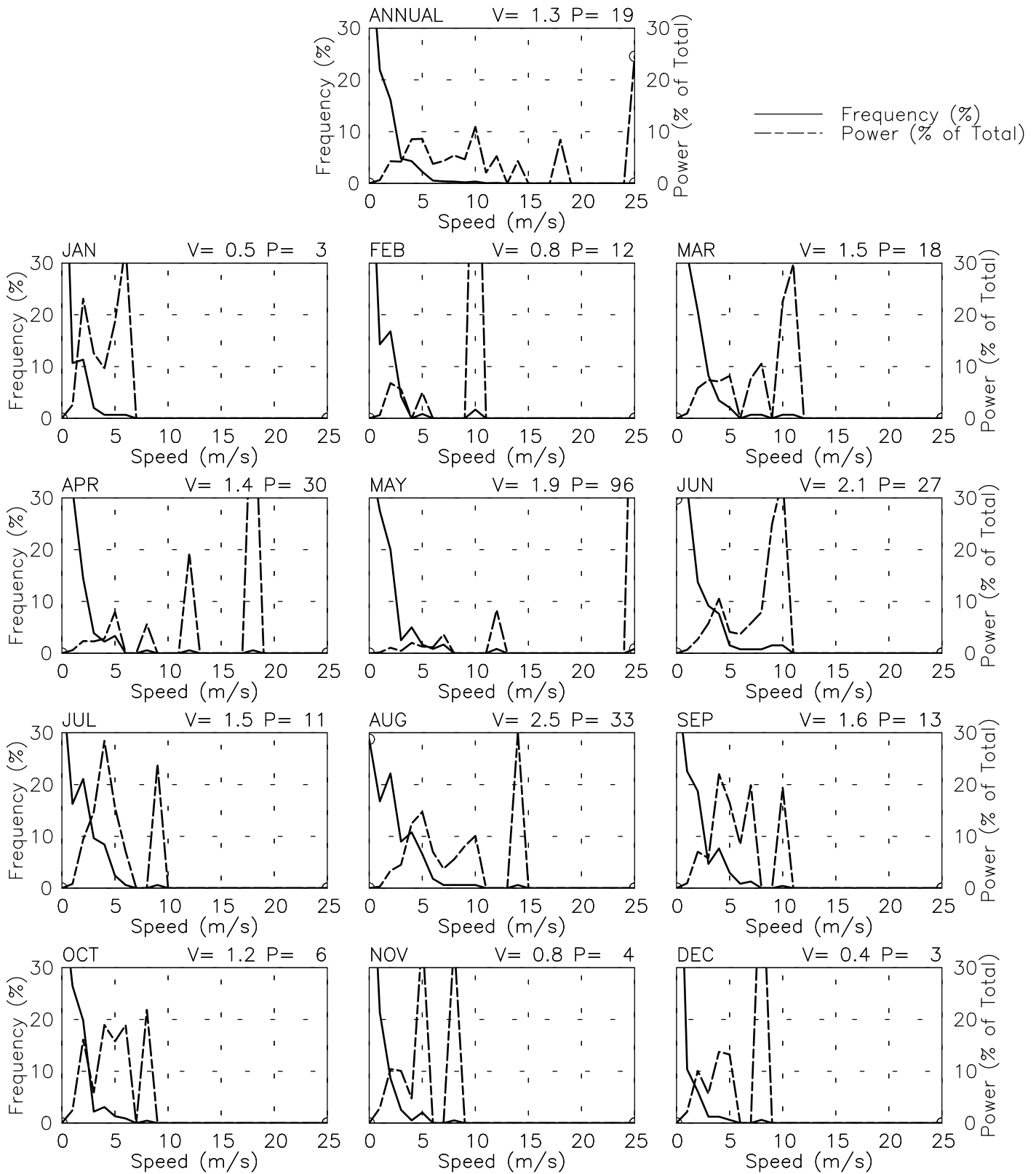


# FREQUENCY OF SPEED & PERCENT OF POWER BY SPEED

KHWAHAN AF - 409010

37° 53' N 70° 13' E - Elev 1040m \*LST=GMT +5 hours NT= +5

07/73-11/80 04/84-04/86 08/01-08/01 01/03-01/03



# PREVAILING DIRECTION & SPEED BY HOUR

KHWAHAN AF - 409010

37° 53' N 70° 13' E - Elev 1040m \*LST=GMT +5 hours NT= +5

07/73-11/80 04/84-04/86 08/01-08/01 01/03-01/03

