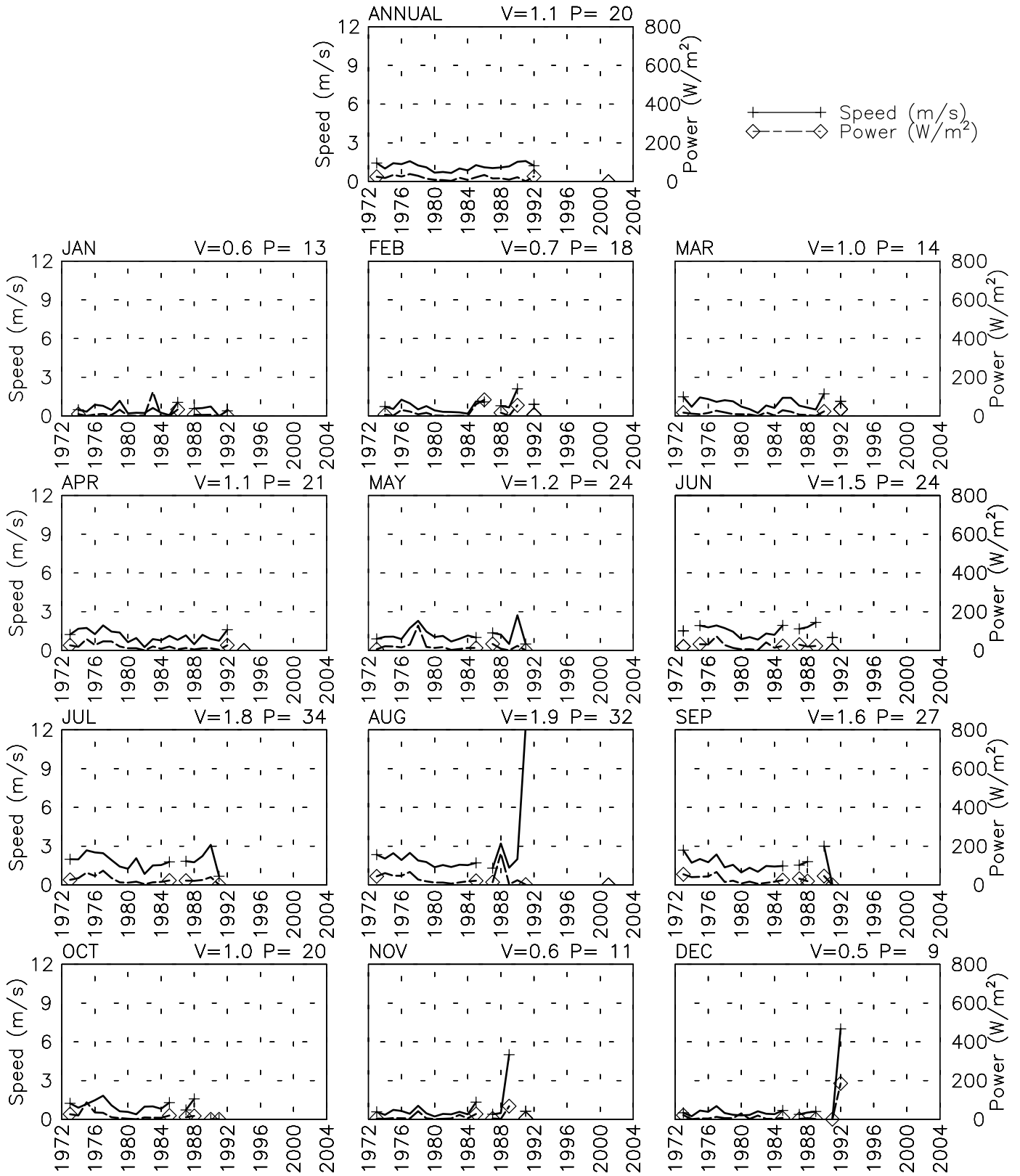


# SPEED AND POWER BY YEAR

FAIZABAD AF - 409040

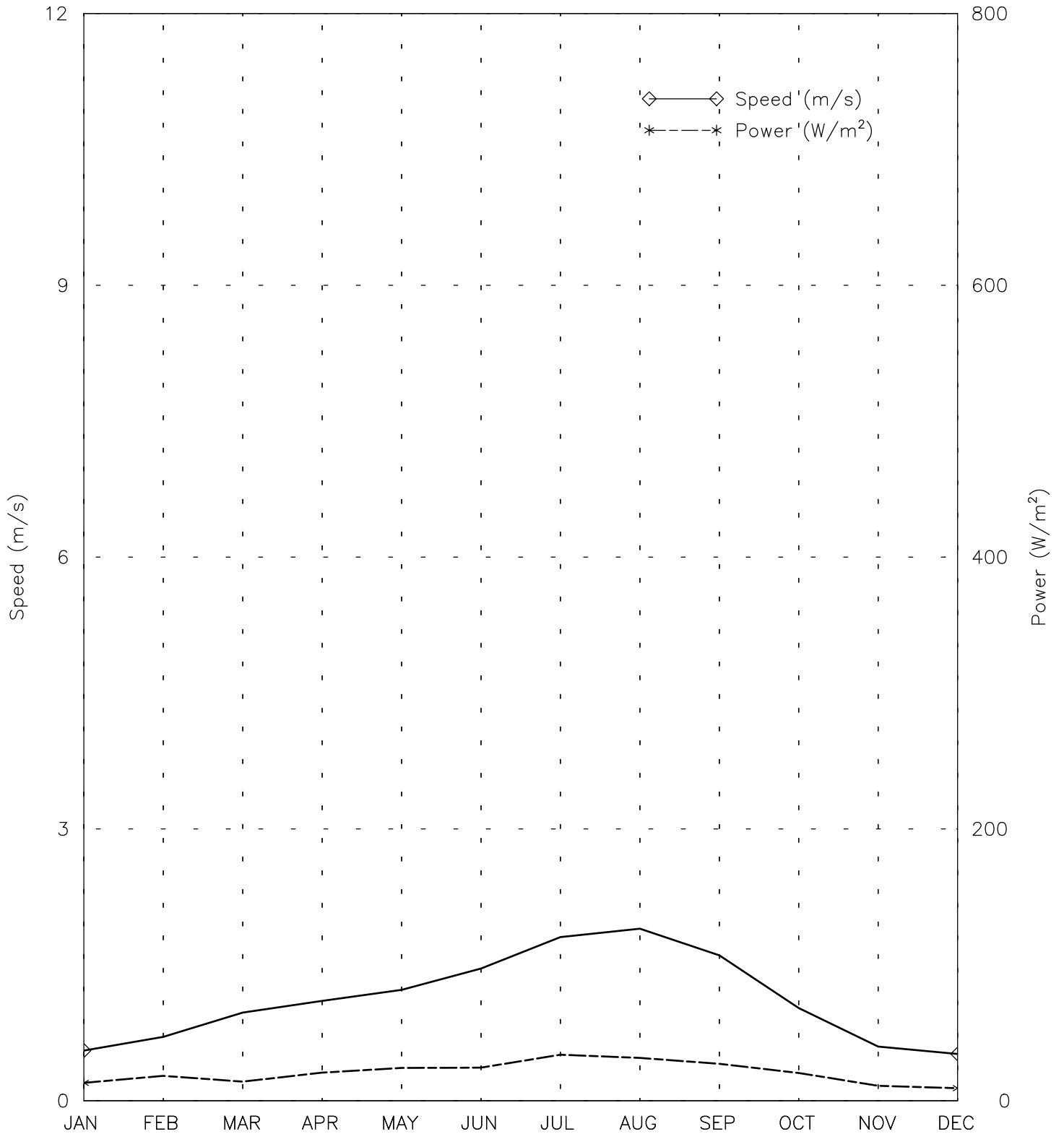
37° 07' N 70° 31' E - Elev 1200m \*LST=GMT +5 hours NT= +5  
03/73-12/92 04/94-07/94 08/01-08/01



# SPEED AND POWER BY MONTH

FAIZABAD AF - 409040

37° 07' N 70° 31' E - Elev 1200m \*LST=GMT +5 hours NT= +5  
03/73-12/92 04/94-07/94 08/01-08/01

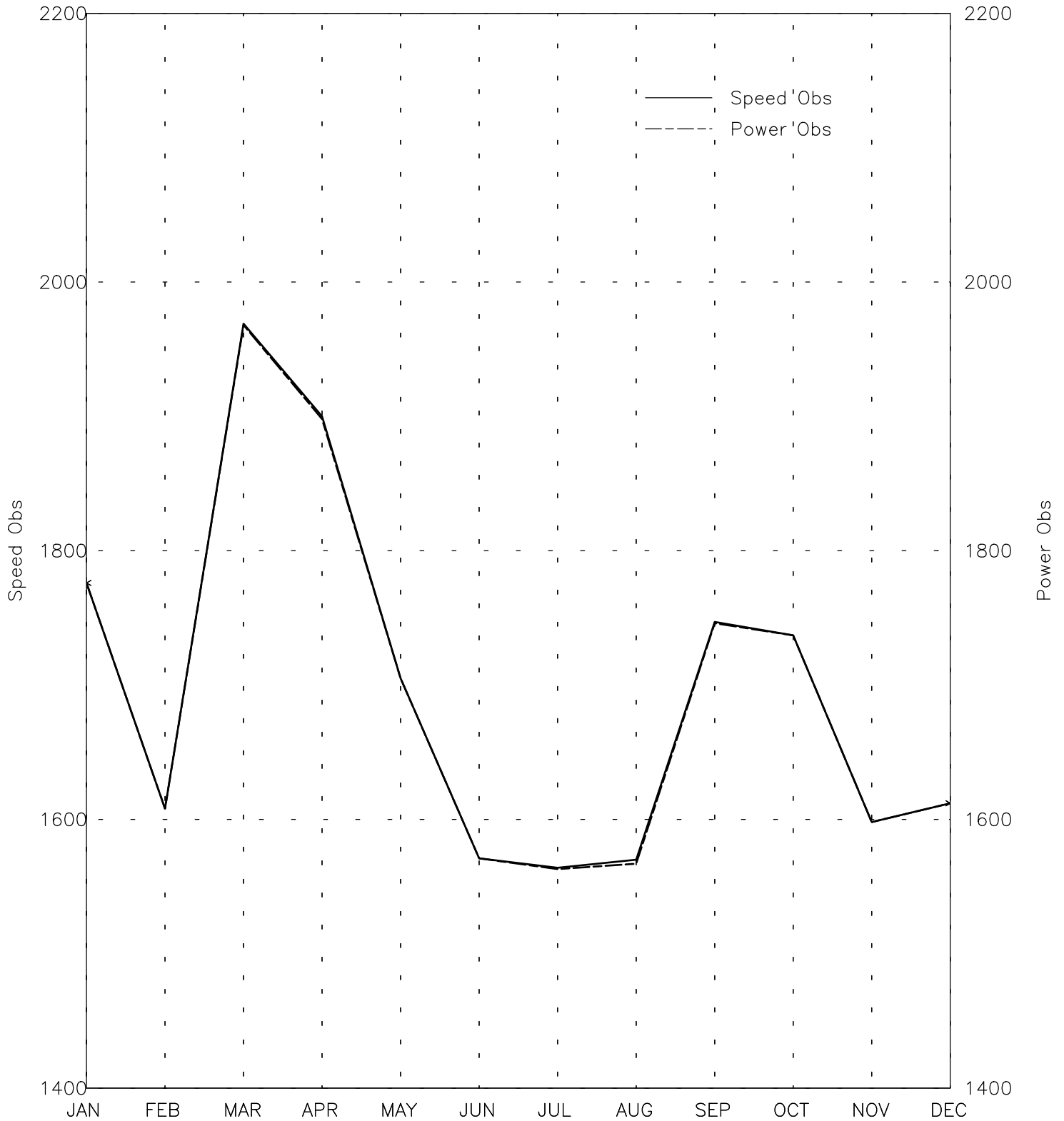


Month

Tue Aug 8 17:03:39 2006

# OBSERVATIONS BY MONTH

FAIZABAD AF - 409040  
37° 07' N 70° 31' E - Elev 1200m \*LST=GMT +5 hours NT= +5  
03/73-12/92 04/94-07/94 08/01-08/01

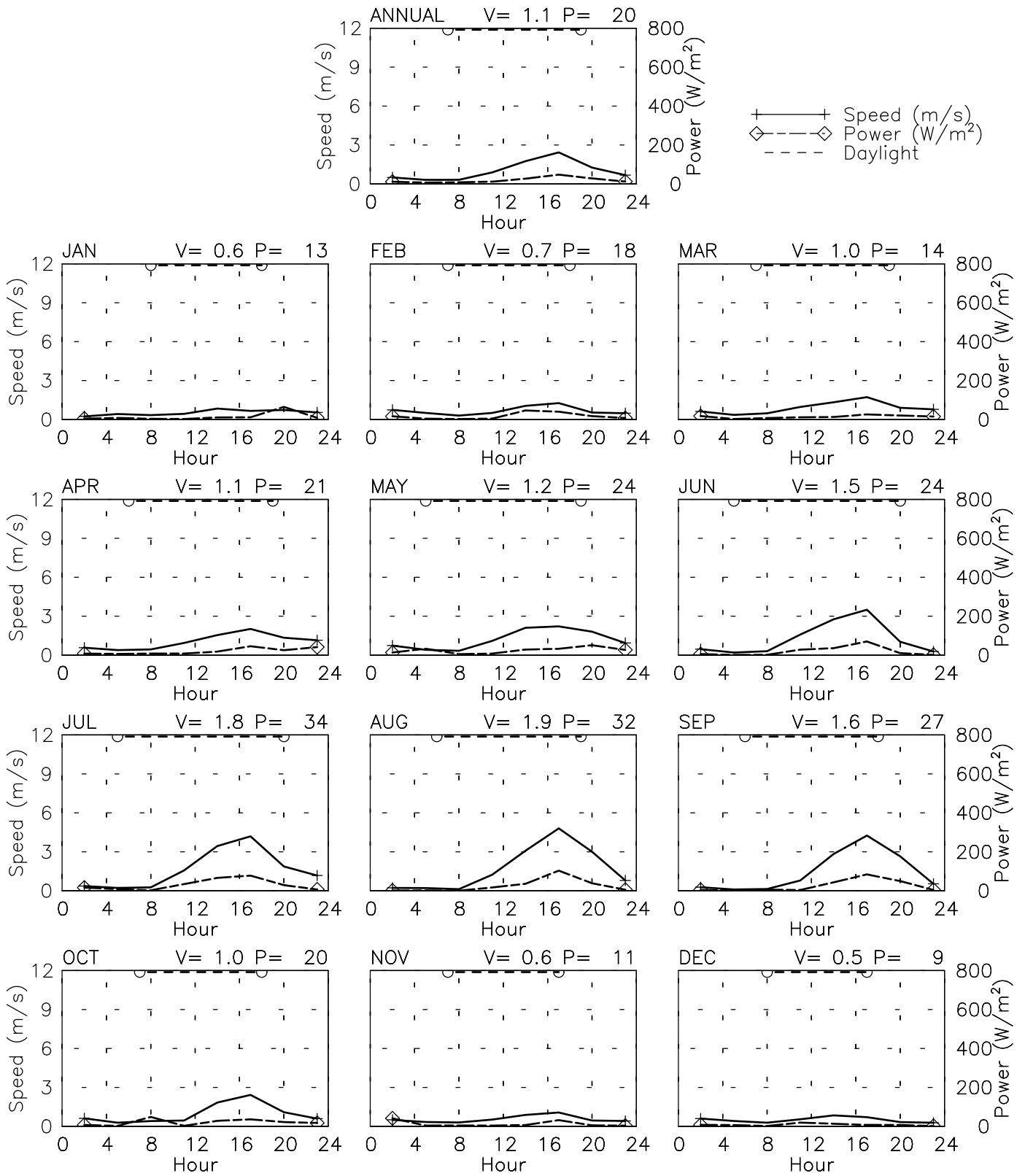


Month  
Tue Aug 8 17:03:40 2006

# SPEED AND POWER BY HOUR

FAIZABAD AF - 409040

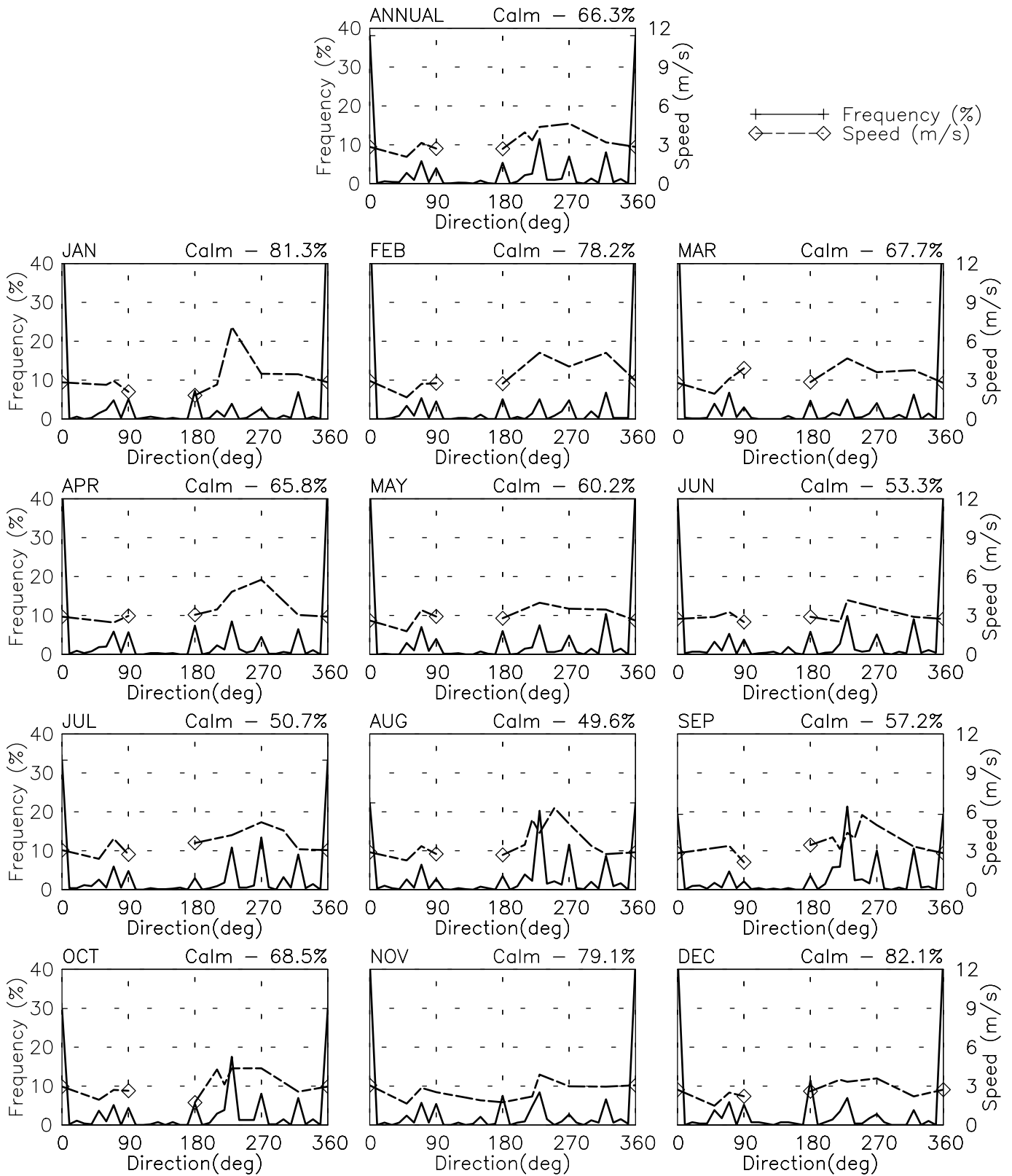
37° 07' N 70° 31' E - Elev 1200m \*LST=GMT +5 hours NT= +5  
 03/73-12/92 04/94-07/94 08/01-08/01



# FREQUENCY AND SPEED BY DIRECTION

FAIZABAD AF - 409040

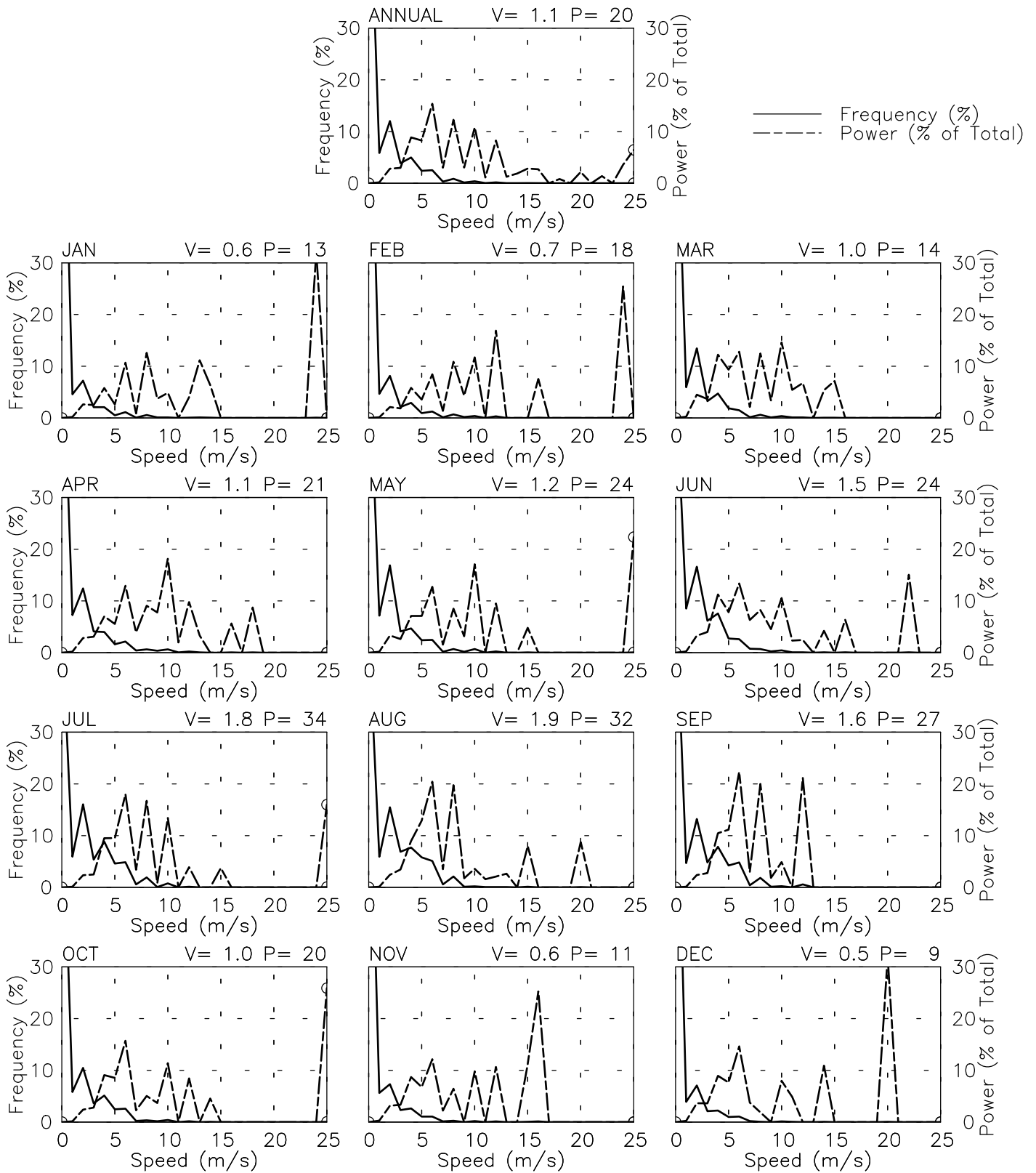
37° 07' N 70° 31' E - Elev 1200m \*LST=GMT +5 hours NT= +5  
 03/73-12/92 04/94-07/94 08/01-08/01



# FREQUENCY OF SPEED & PERCENT OF POWER BY SPEED

FAIZABAD AF - 409040

37° 07' N 70° 31' E - Elev 1200m \*LST=GMT +5 hours NT= +5  
 03/73-12/92 04/94-07/94 08/01-08/01



# PREVAILING DIRECTION & SPEED BY HOUR

FAIZABAD AF - 409040

37° 07' N 70° 31' E - Elev 1200m \*LST=GMT +5 hours NT= +5  
 03/73-12/92 04/94-07/94 08/01-08/01

