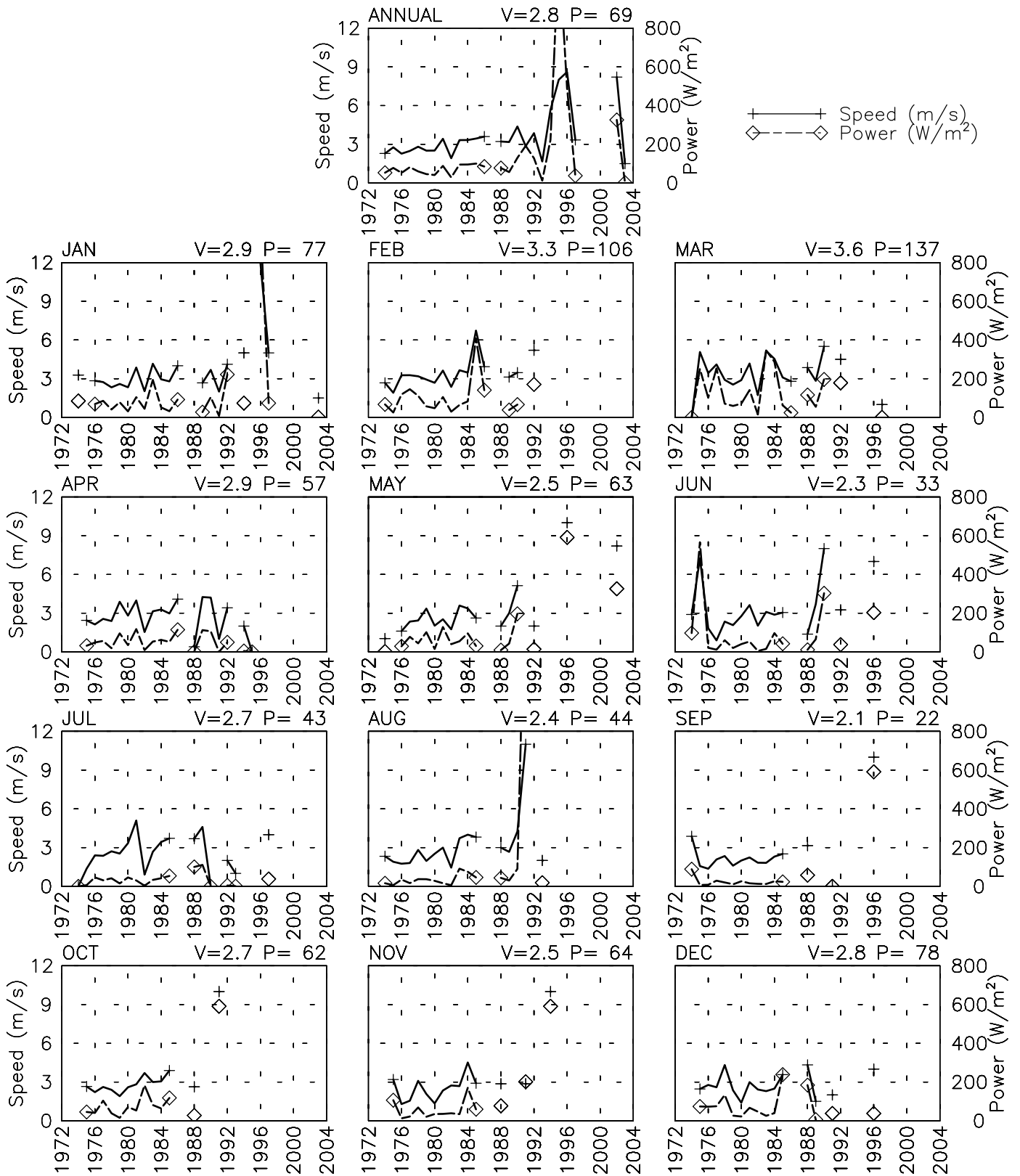


SPEED AND POWER BY YEAR

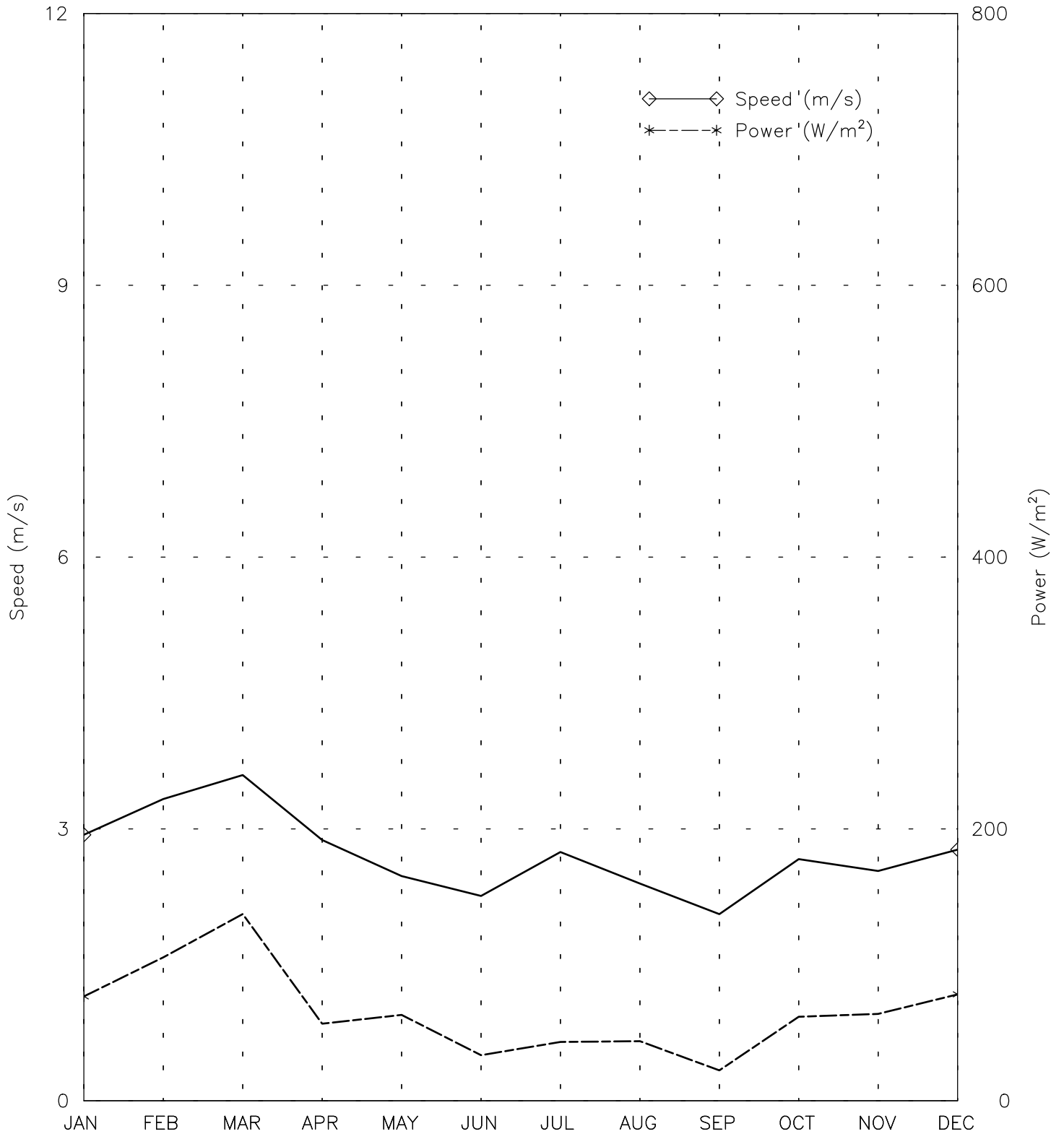
SHEBIRGHAN AF - 409080

36° 40' N 65° 43' E - Elev 360m *LST=GMT +5 hours NT= +4
 01/74-04/86 03/88-07/97 05/02-01/03



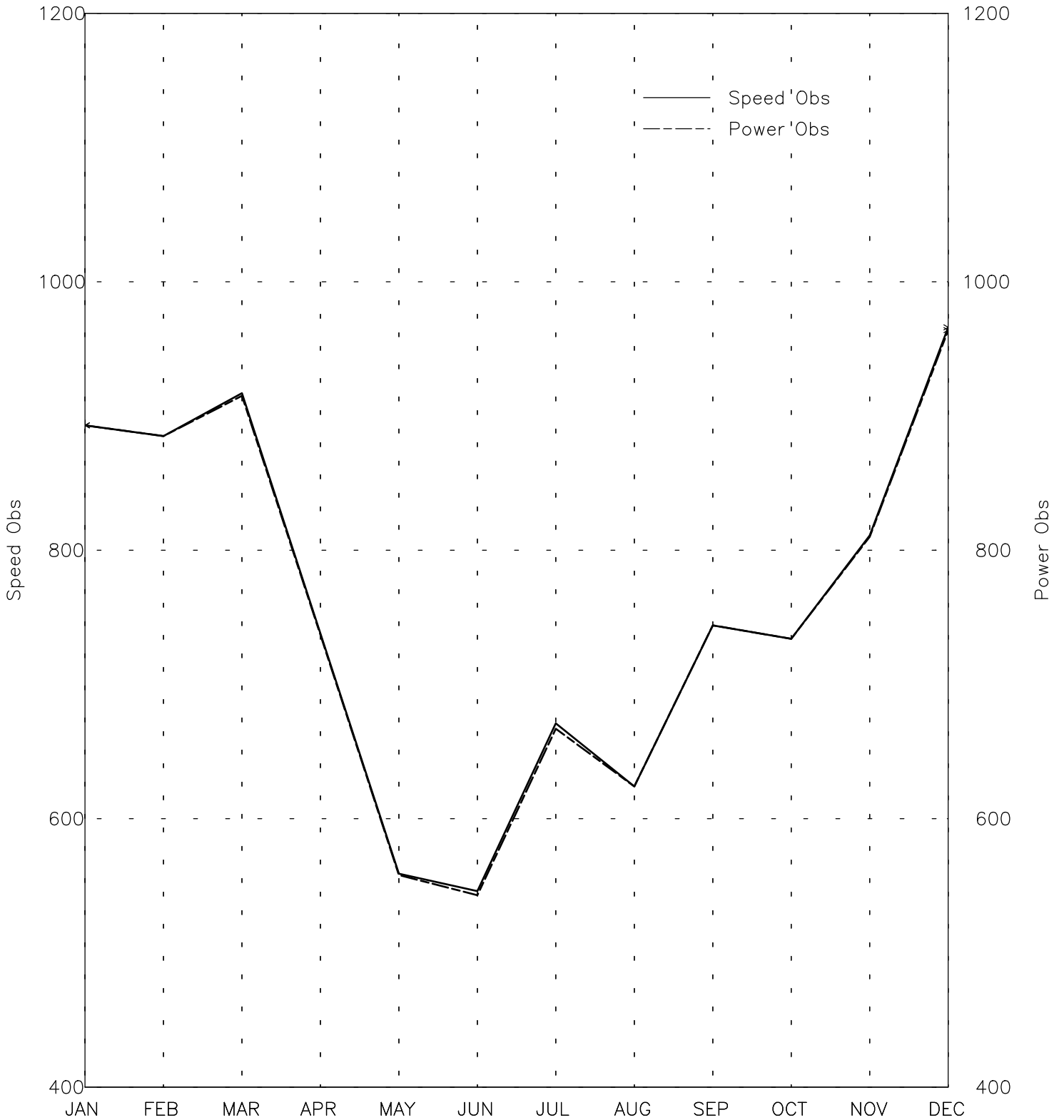
SPEED AND POWER BY MONTH

SHEBIRGHAN AF - 409080
36° 40' N 65° 43' E - Elev 360m *LST=GMT +5 hours NT= +4
01/74-04/86 03/88-07/97 05/02-01/03



OBSERVATIONS BY MONTH

SHEBIRGHAN AF - 409080
36° 40' N 65° 43' E - Elev 360m *LST=GMT +5 hours NT= +4
01/74-04/86 03/88-07/97 05/02-01/03

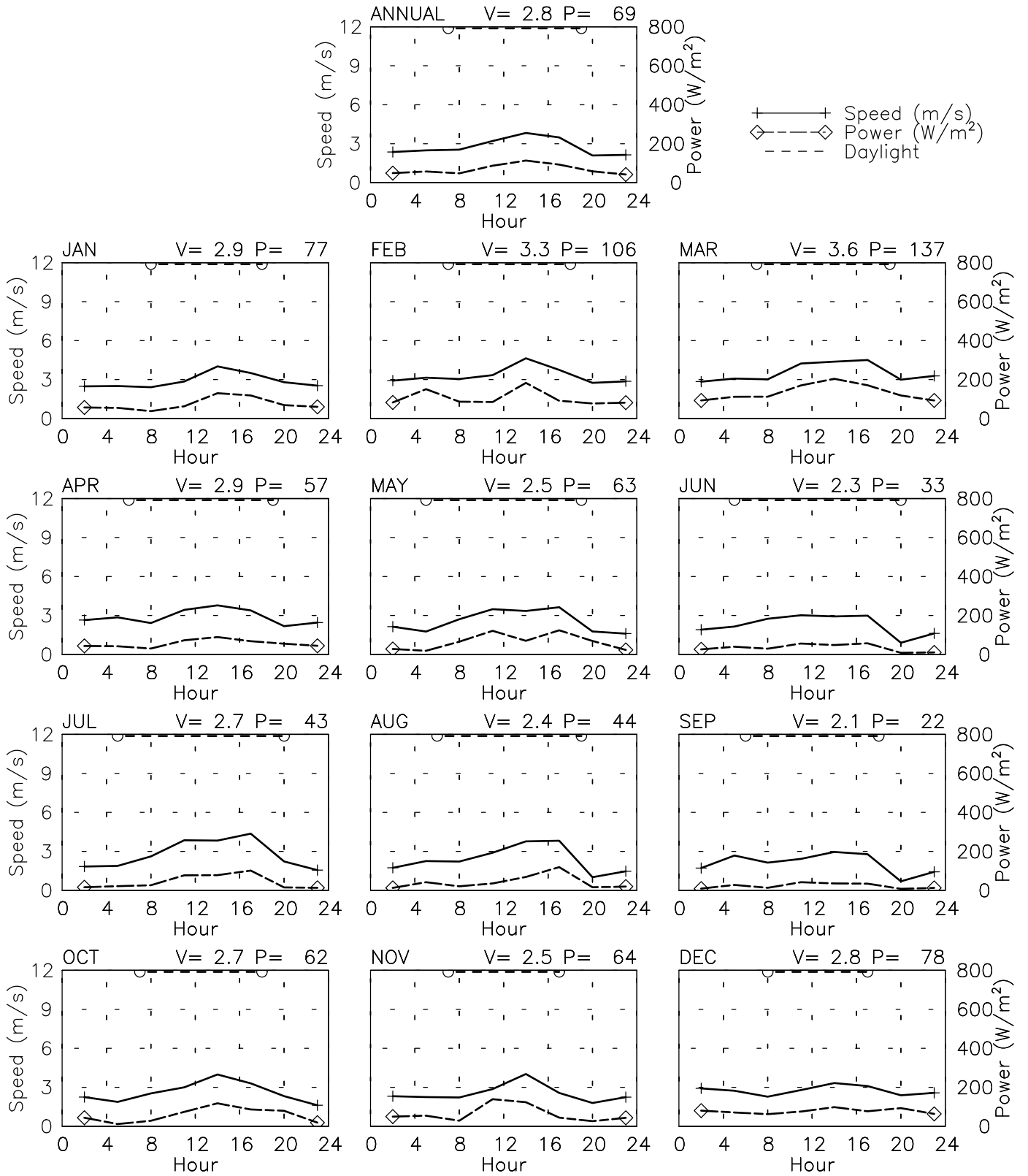


Month
Tue Aug 8 17:04:27 2006

SPEED AND POWER BY HOUR

SHEBIRGHAN AF - 409080

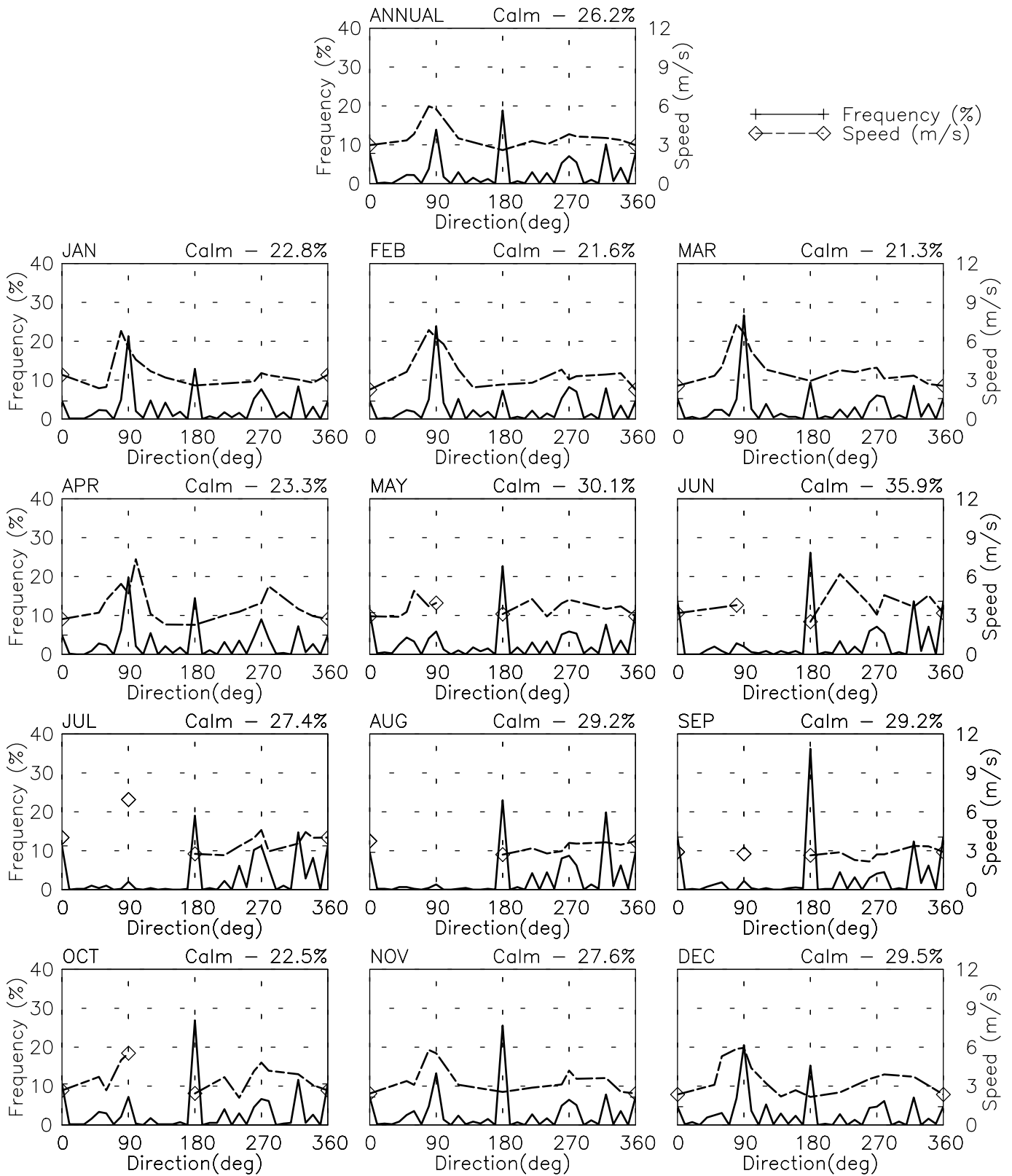
36° 40' N 65° 43' E - Elev 360m *LST=GMT +5 hours NT= +4
 01/74-04/86 03/88-07/97 05/02-01/03



FREQUENCY AND SPEED BY DIRECTION

SHEBIRGHAN AF - 409080

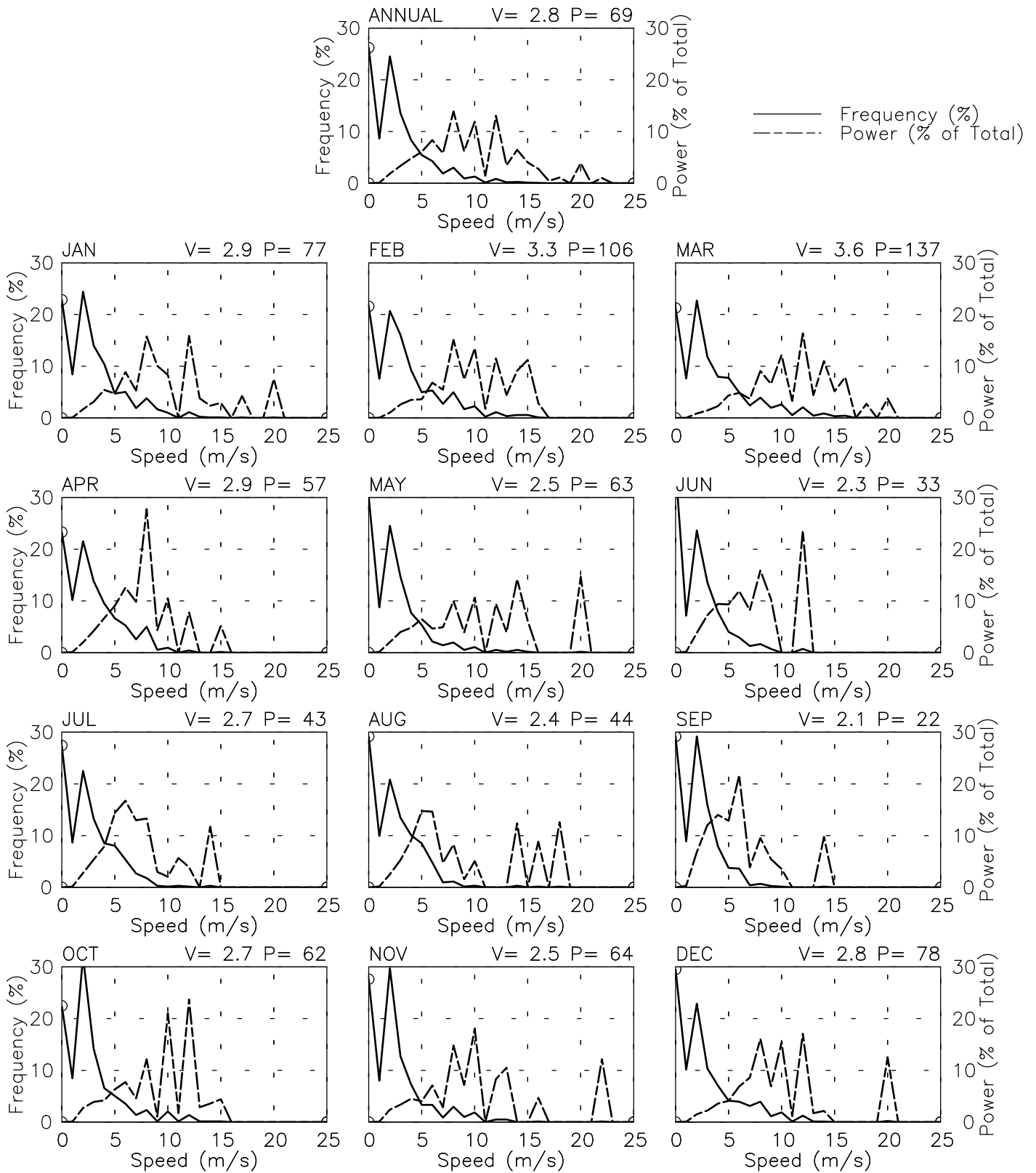
36° 40' N 65° 43' E - Elev 360m *LST=GMT +5 hours NT= +4
 01/74-04/86 03/88-07/97 05/02-01/03



FREQUENCY OF SPEED & PERCENT OF POWER BY SPEED

SHEBIRGHAN AF - 409080

36° 40' N 65° 43' E - Elev 360m *LST=GMT +5 hours NT= +4
 01/74-04/86 03/88-07/97 05/02-01/03



PREVAILING DIRECTION & SPEED BY HOUR

SHEBIRGHAN AF - 409080

36° 40' N 65° 43' E - Elev 360m *LST=GMT +5 hours NT= +4
 01/74-04/86 03/88-07/97 05/02-01/03

