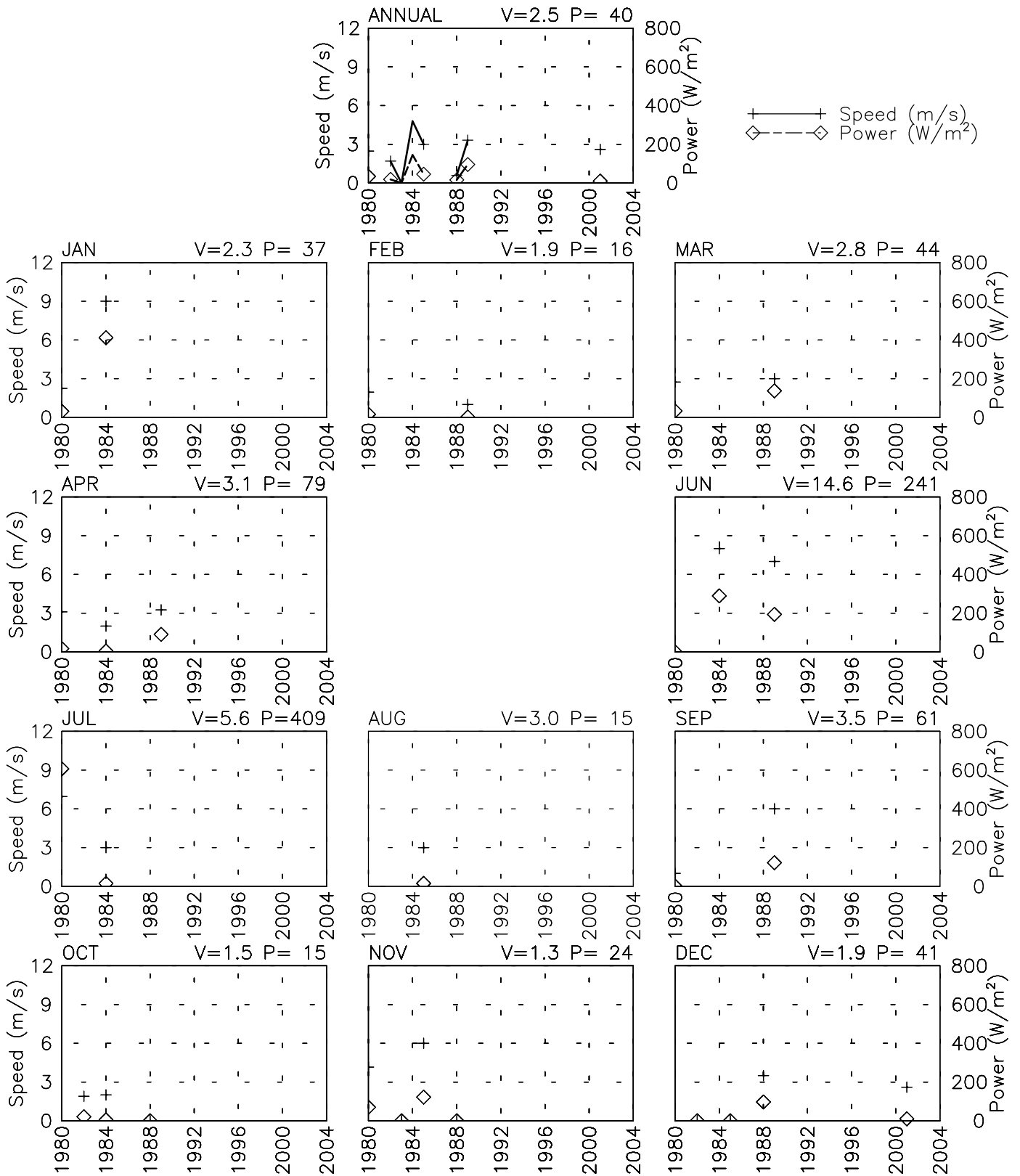


SPEED AND POWER BY YEAR

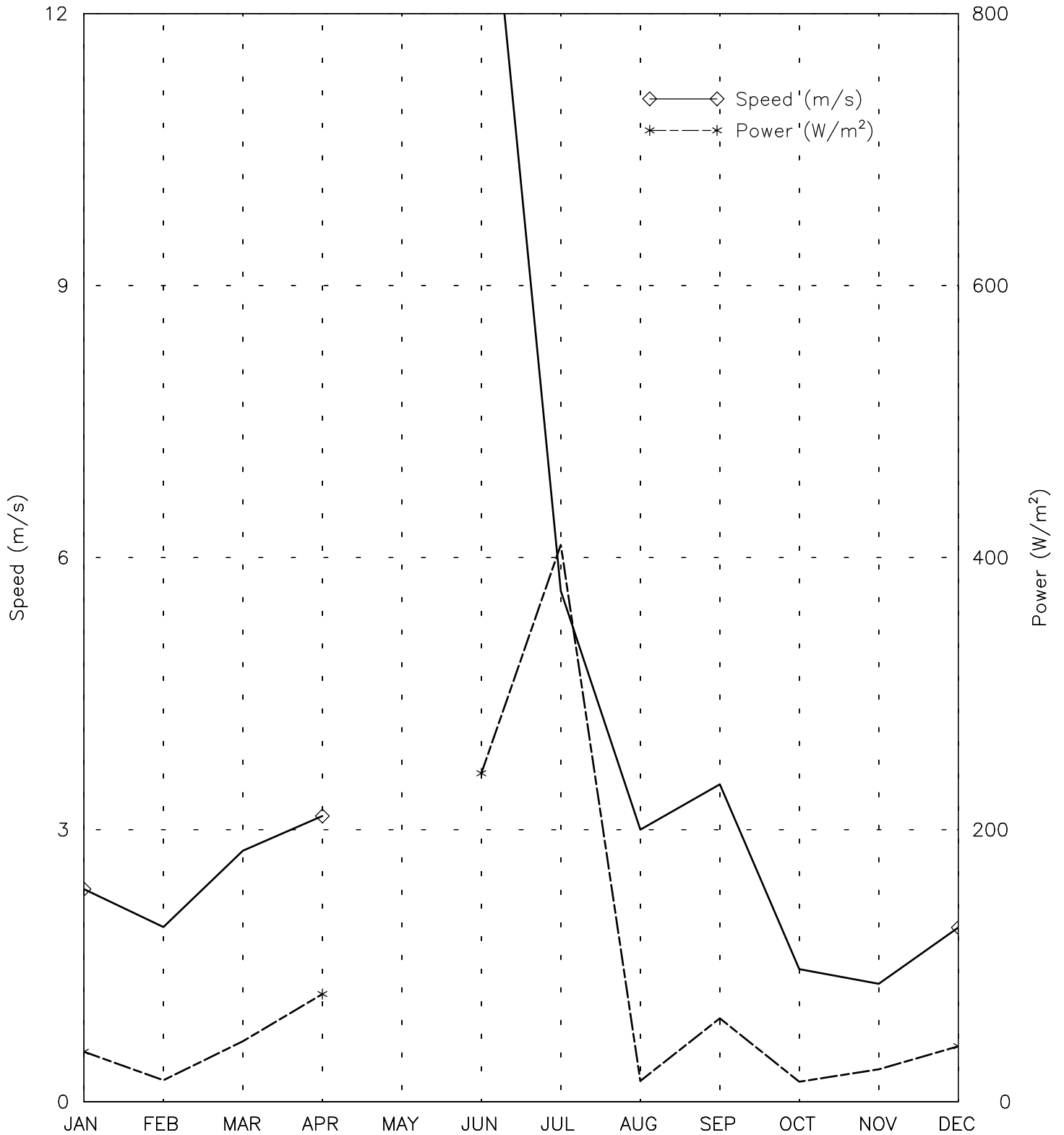
ISLAM-QALA AF - 409350

34° 39' N 61° 35' E - Elev 800m *LST=GMT +5 hours NT= +4
 01/80-11/80 10/82-12/85 10/88-09/89 12/01-12/01



SPEED AND POWER BY MONTH

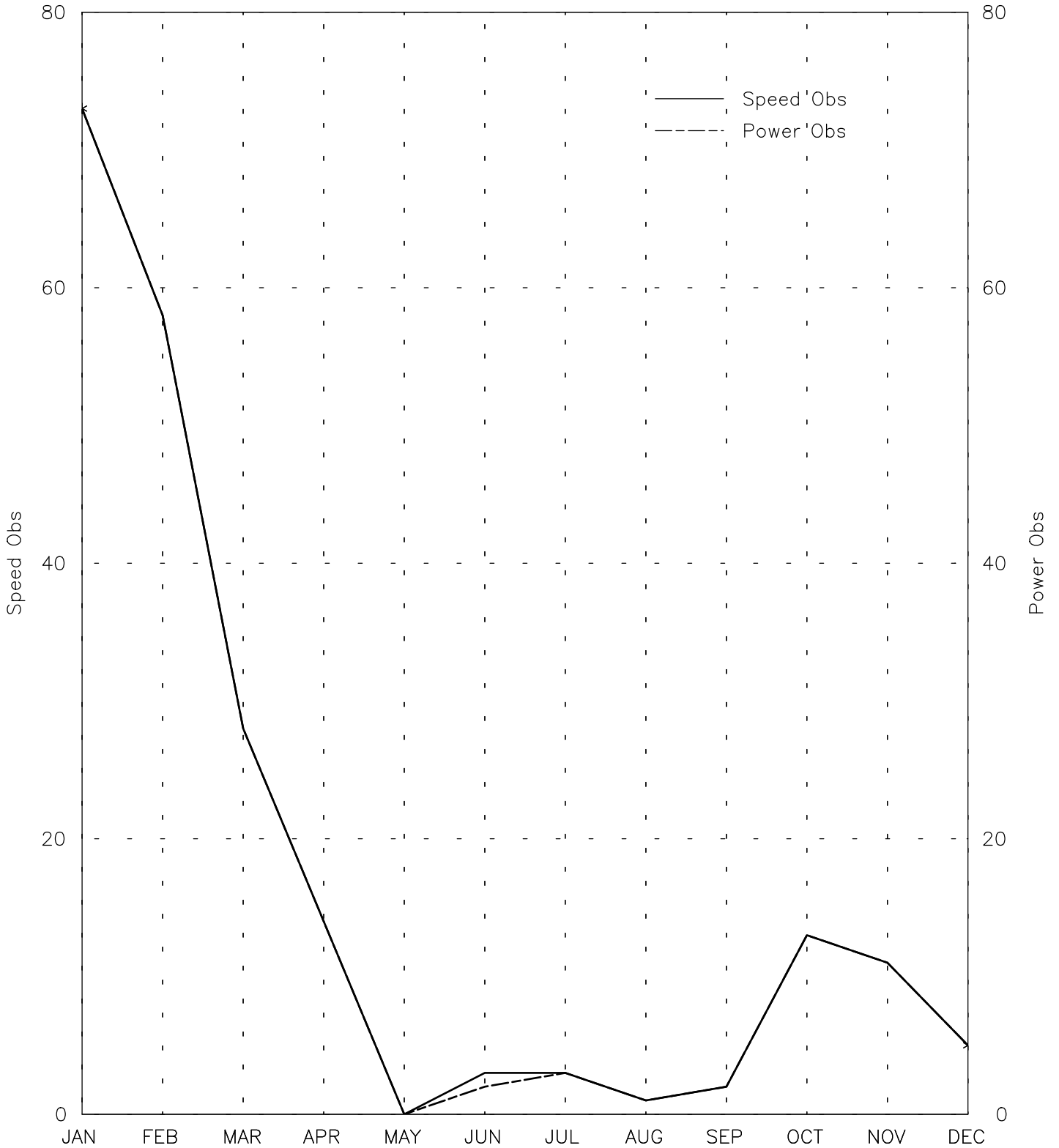
ISLAM-QALA AF - 409350
34° 39' N 61° 35' E - Elev 800m *LST=GMT +5 hours NT= +4
01/80-11/80 10/82-12/85 10/88-09/89 12/01-12/01



OBSERVATIONS BY MONTH

ISLAM-QALA AF - 409350

34° 39' N 61° 35' E - Elev 800m *LST=GMT +5 hours NT= +4
01/80-11/80 10/82-12/85 10/88-09/89 12/01-12/01

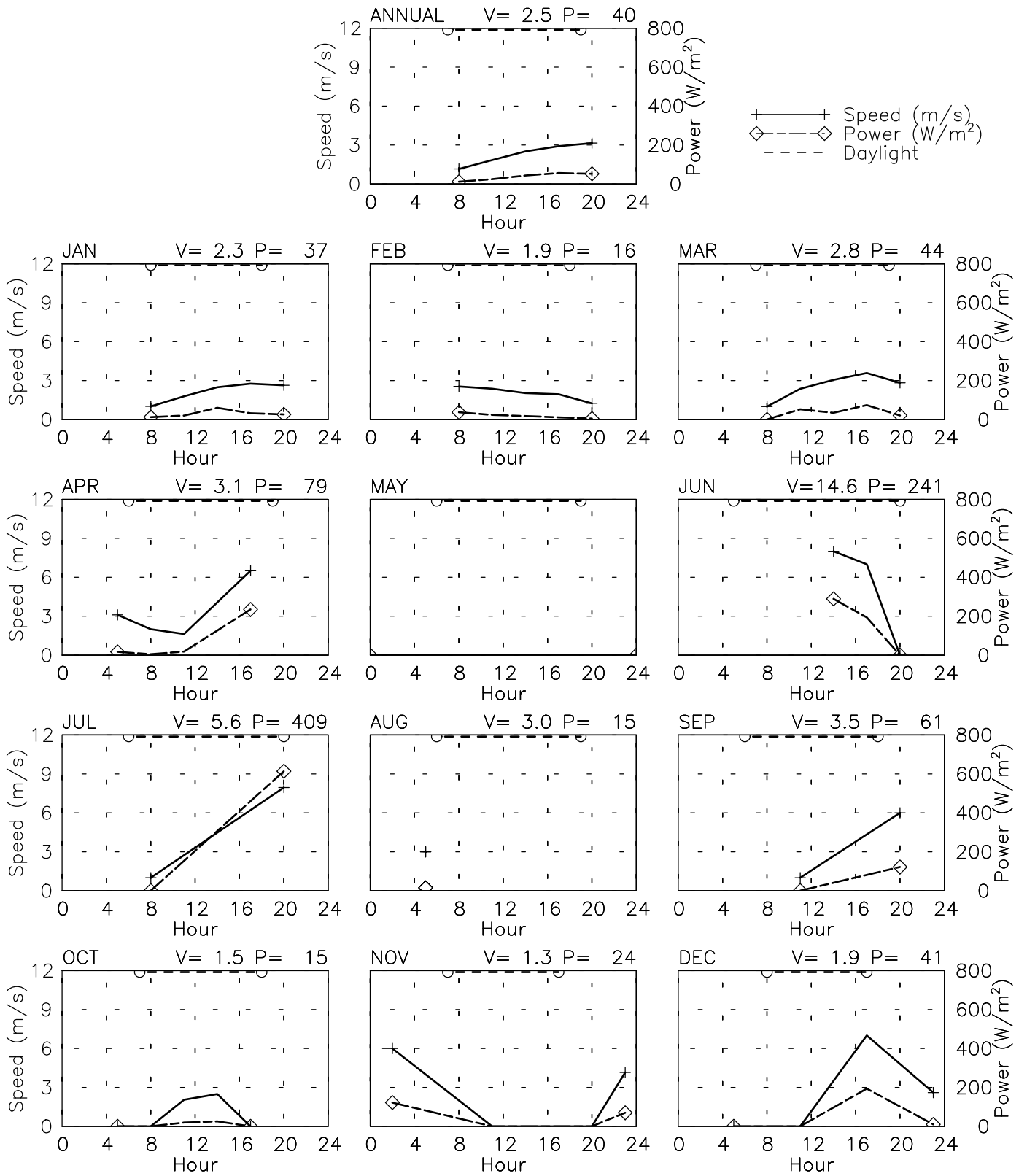


Month
Tue Aug 8 17:08:05 2006

SPEED AND POWER BY HOUR

ISLAM-QALA AF - 409350

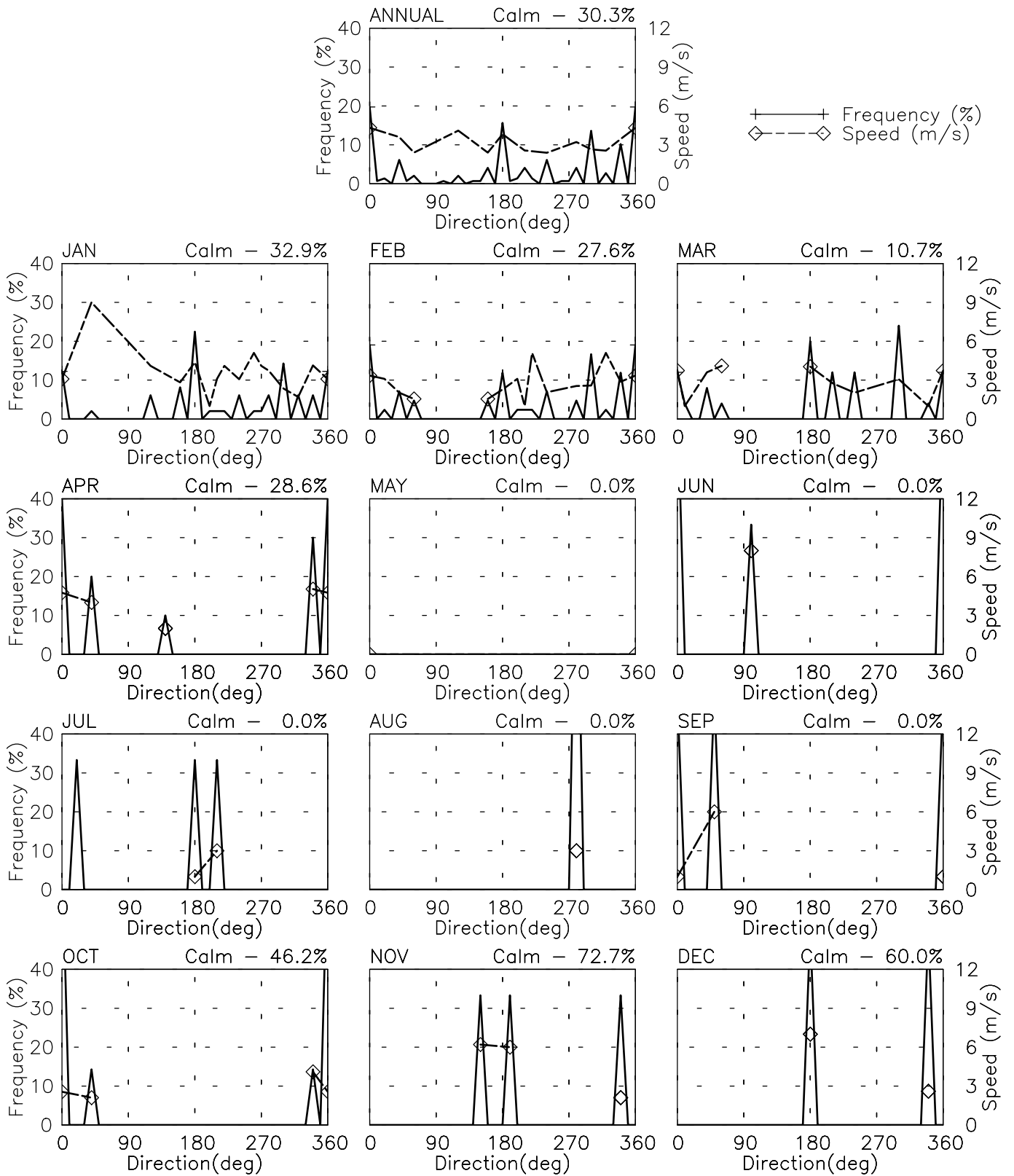
34° 39' N 61° 35' E - Elev 800m *LST=GMT +5 hours NT= +4
 01/80-11/80 10/82-12/85 10/88-09/89 12/01-12/01



FREQUENCY AND SPEED BY DIRECTION

ISLAM-QALA AF - 409350

34° 39' N 61° 35' E - Elev 800m *LST=GMT +5 hours NT= +4
 01/80-11/80 10/82-12/85 10/88-09/89 12/01-12/01

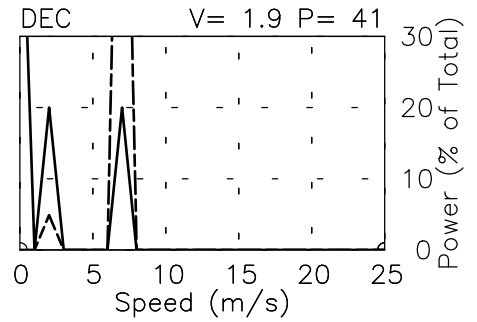
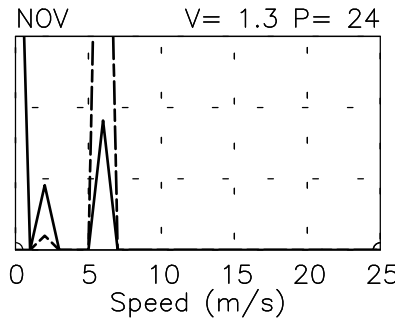
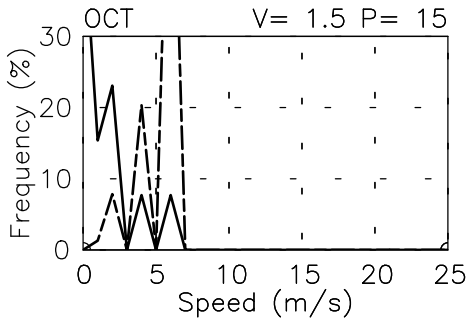
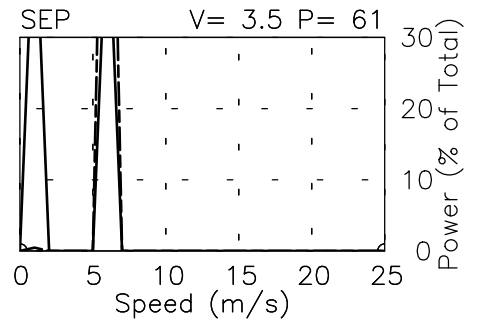
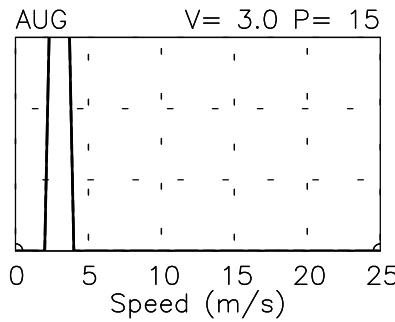
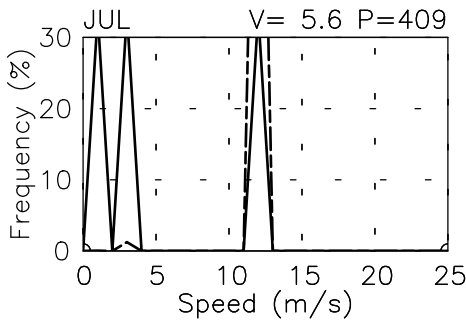
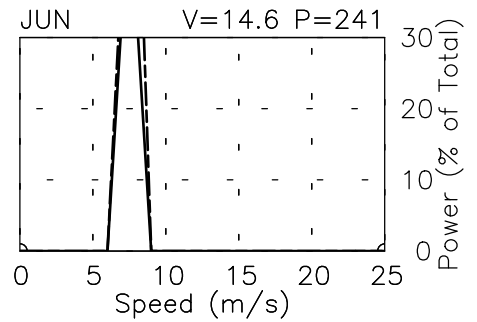
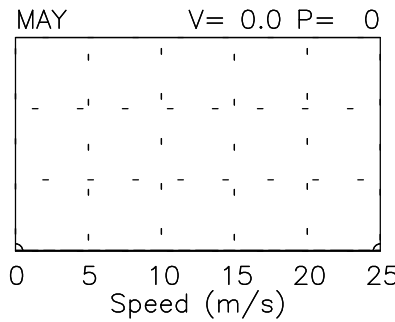
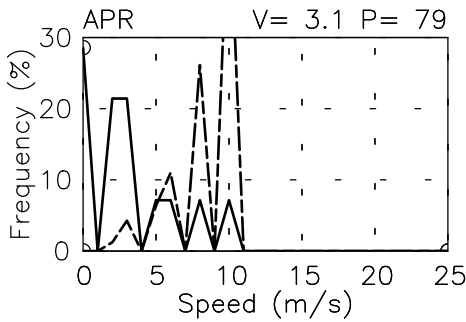
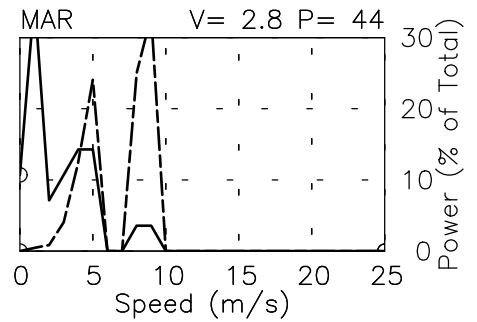
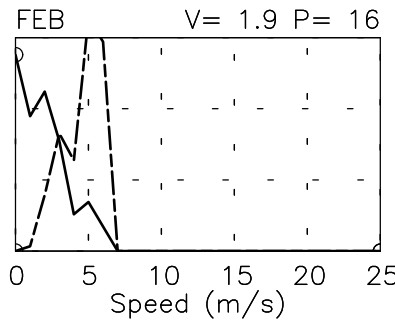
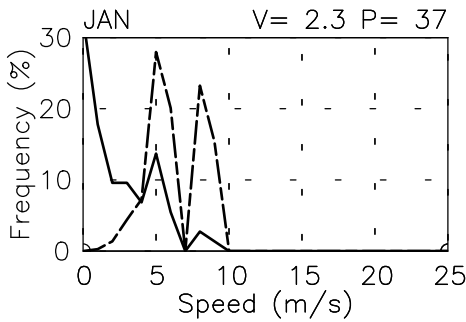
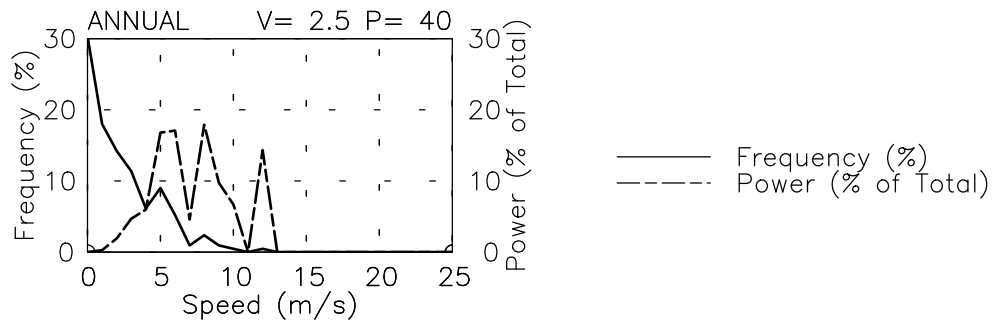


FREQUENCY OF SPEED & PERCENT OF POWER BY SPEED

ISLAM-QALA AF - 409350

34° 39' N 61° 35' E - Elev 800m *LST=GMT +5 hours NT= +4

01/80-11/80 10/82-12/85 10/88-09/89 12/01-12/01



PREVAILING DIRECTION & SPEED BY HOUR

ISLAM-QALA AF - 409350

34° 39' N 61° 35' E - Elev 800m *LST=GMT +5 hours NT= +4

01/80-11/80 10/82-12/85 10/88-09/89 12/01-12/01

