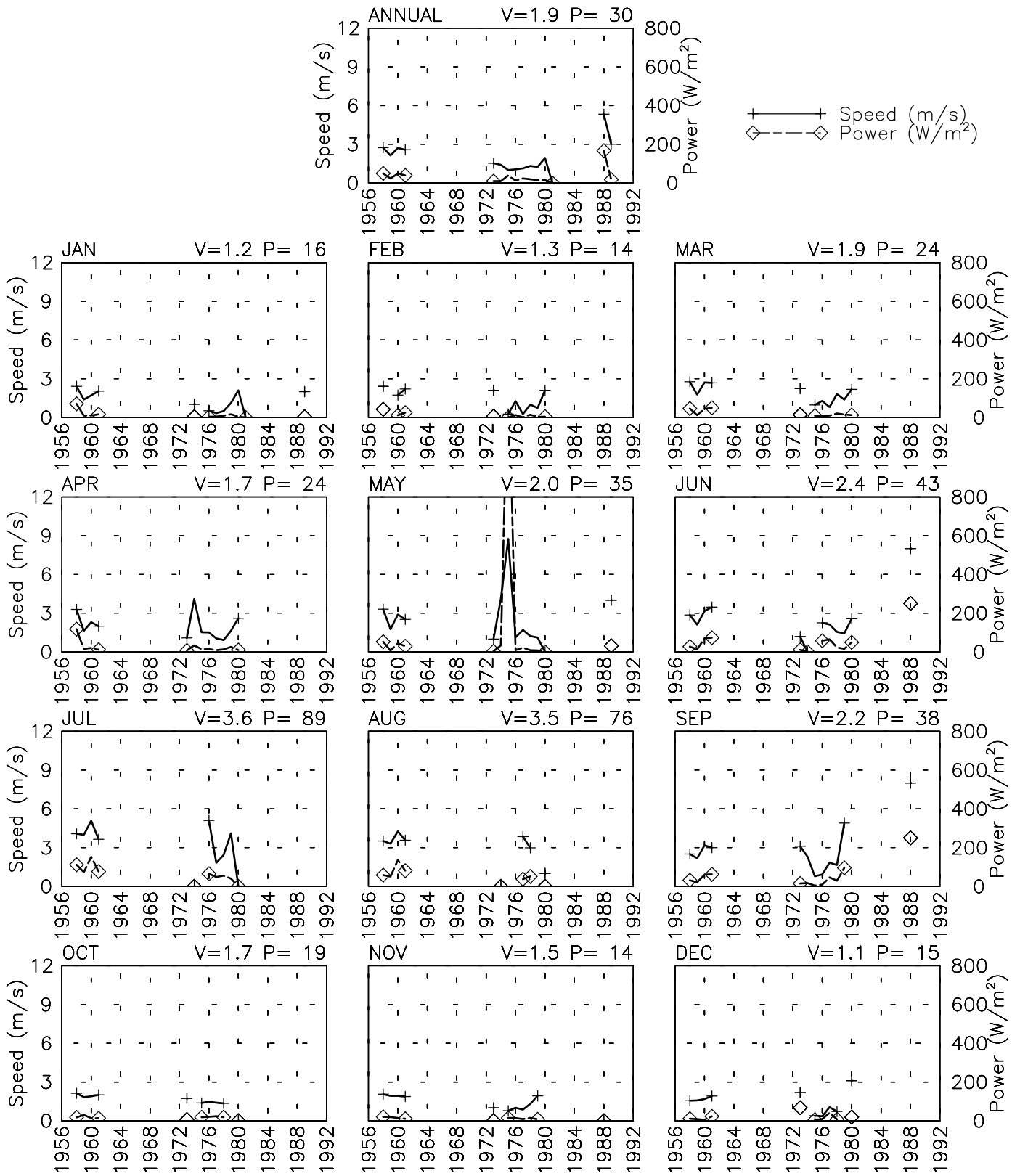


# SPEED AND POWER BY YEAR

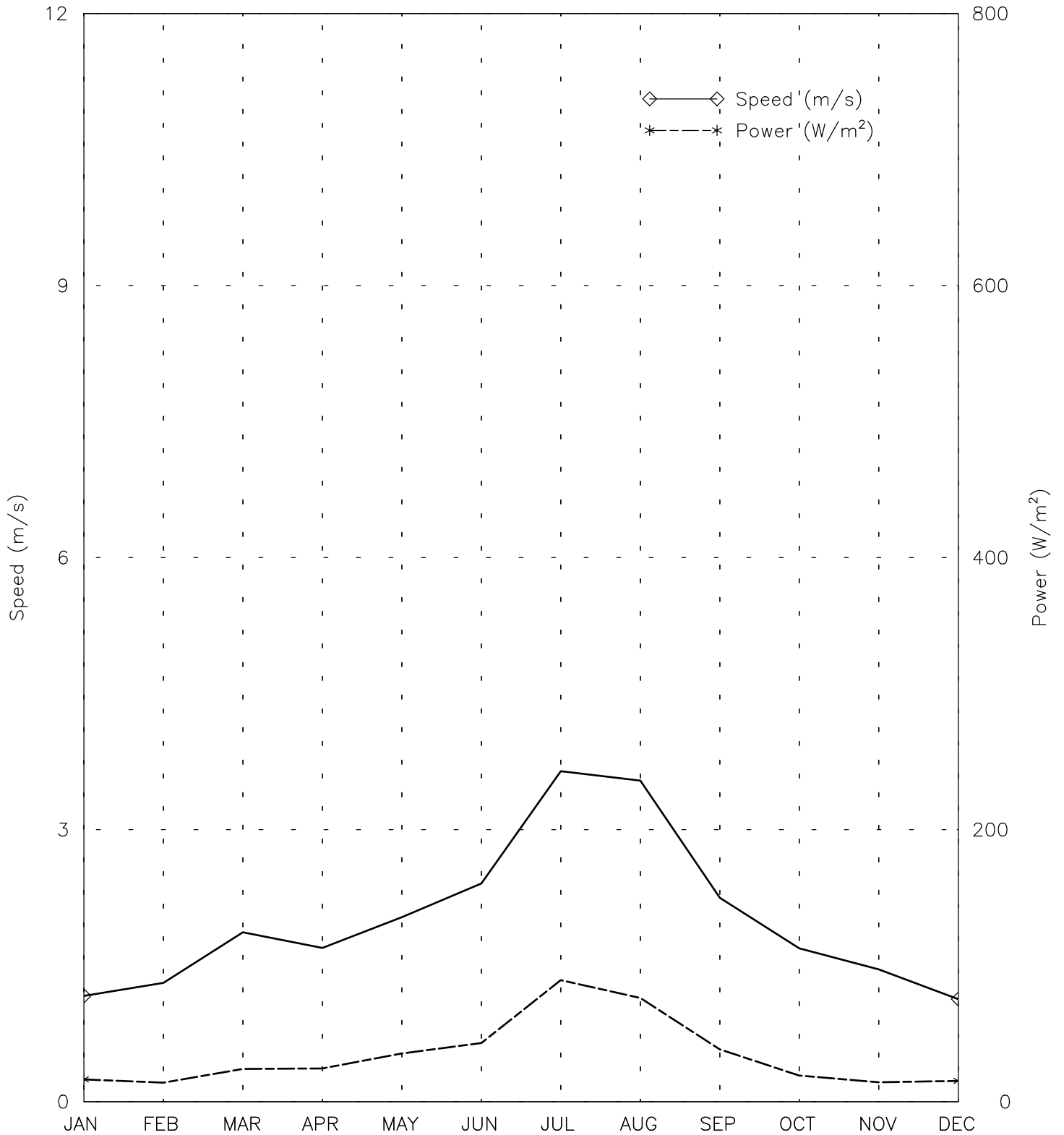
GHELMEEN AF - 409410

34° 53' N 65° 18' E - Elev 2070m \*LST=GMT +5 hours NT= +4  
01/58-12/61 02/73-01/81 06/88-05/89



# SPEED AND POWER BY MONTH

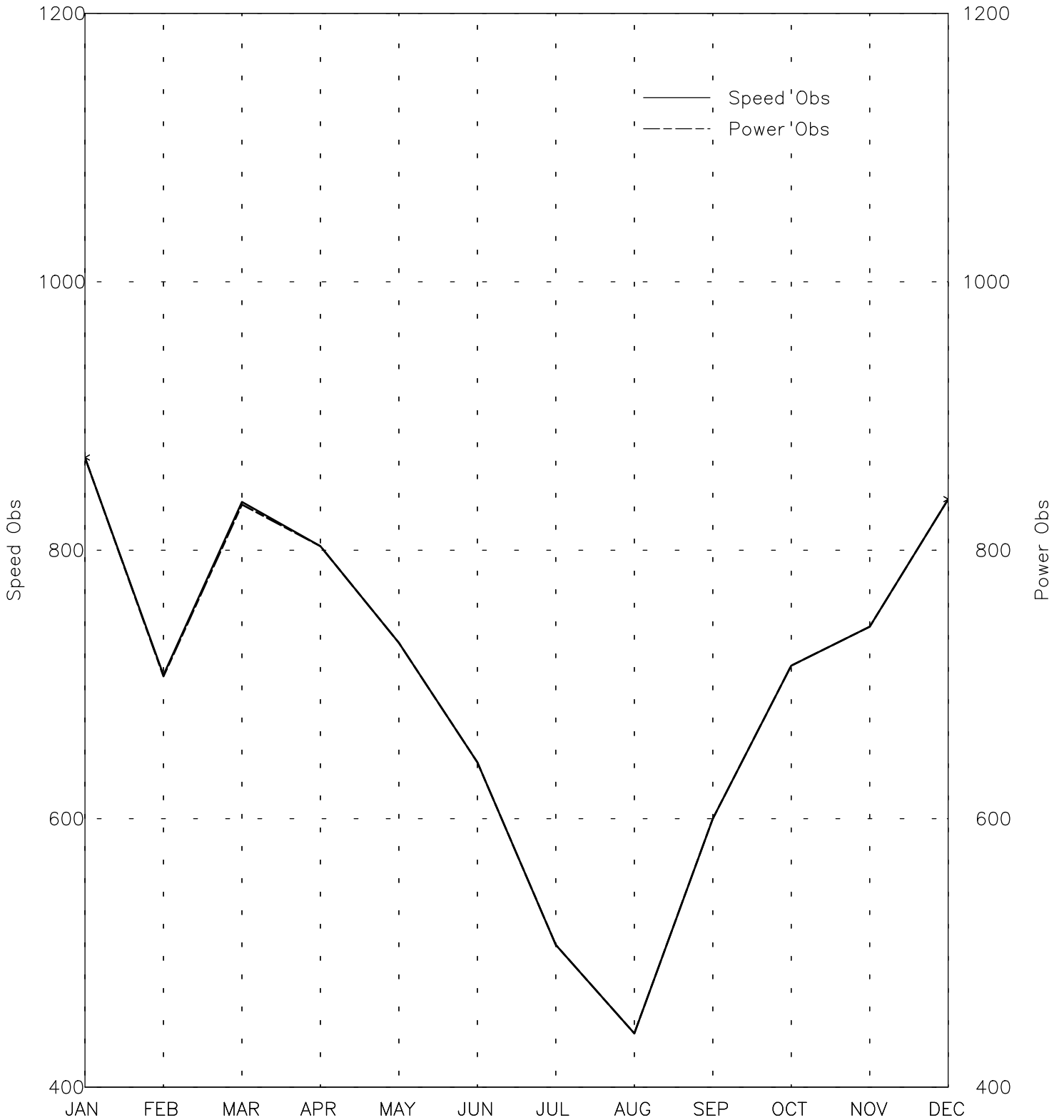
GHELMEEN AF - 409410  
34° 53' N 65° 18' E - Elev 2070m \*LST=GMT +5 hours NT= +4  
01/58-12/61 02/73-01/81 06/88-05/89



Month  
Tue Aug 8 17:04:40 2006

# OBSERVATIONS BY MONTH

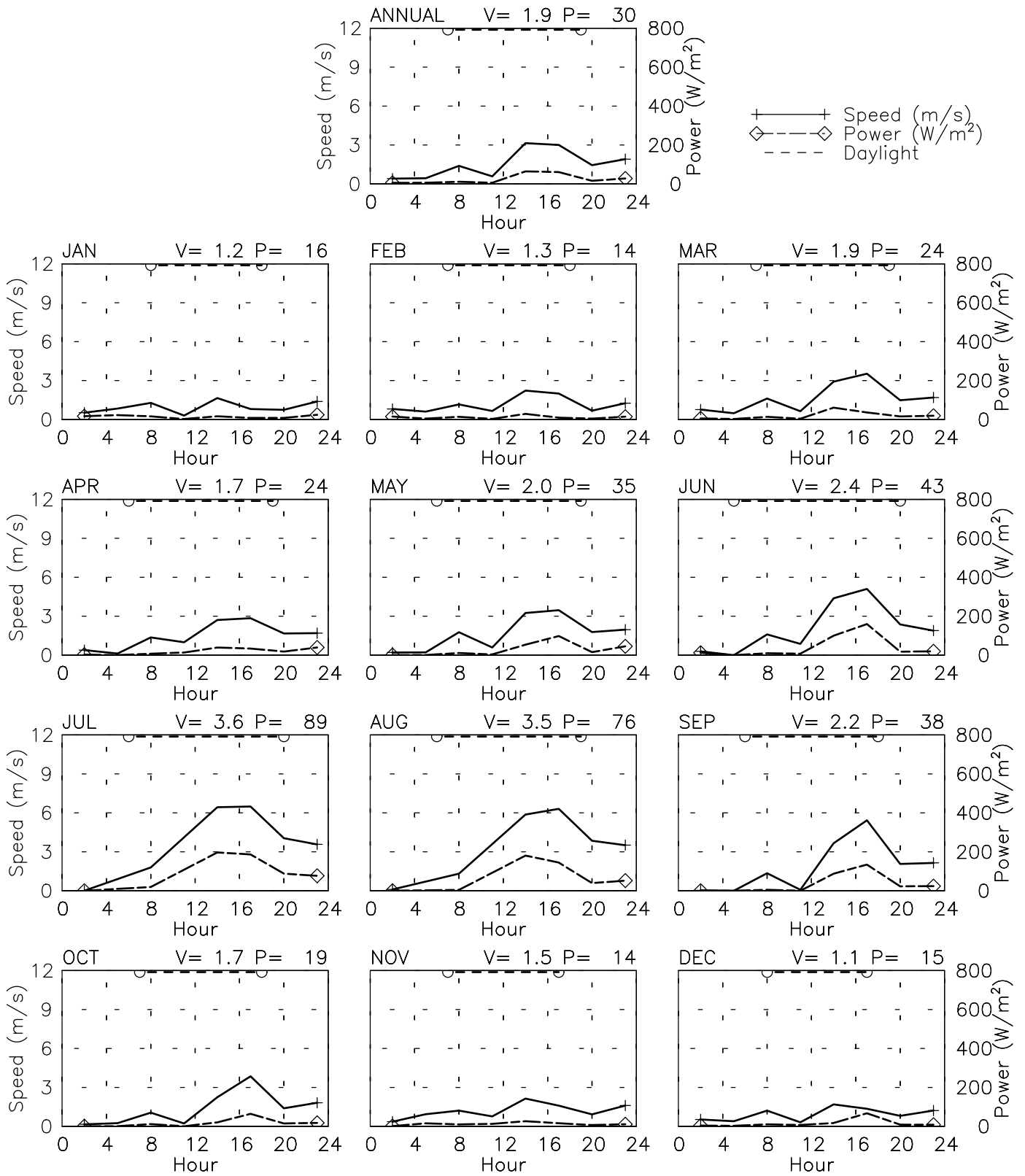
GHELMEEN AF - 409410  
34° 53' N 65° 18' E - Elev 2070m \*LST=GMT +5 hours NT= +4  
01/58-12/61 02/73-01/81 06/88-05/89



Month  
Tue Aug 8 17:04:40 2006

# SPEED AND POWER BY HOUR

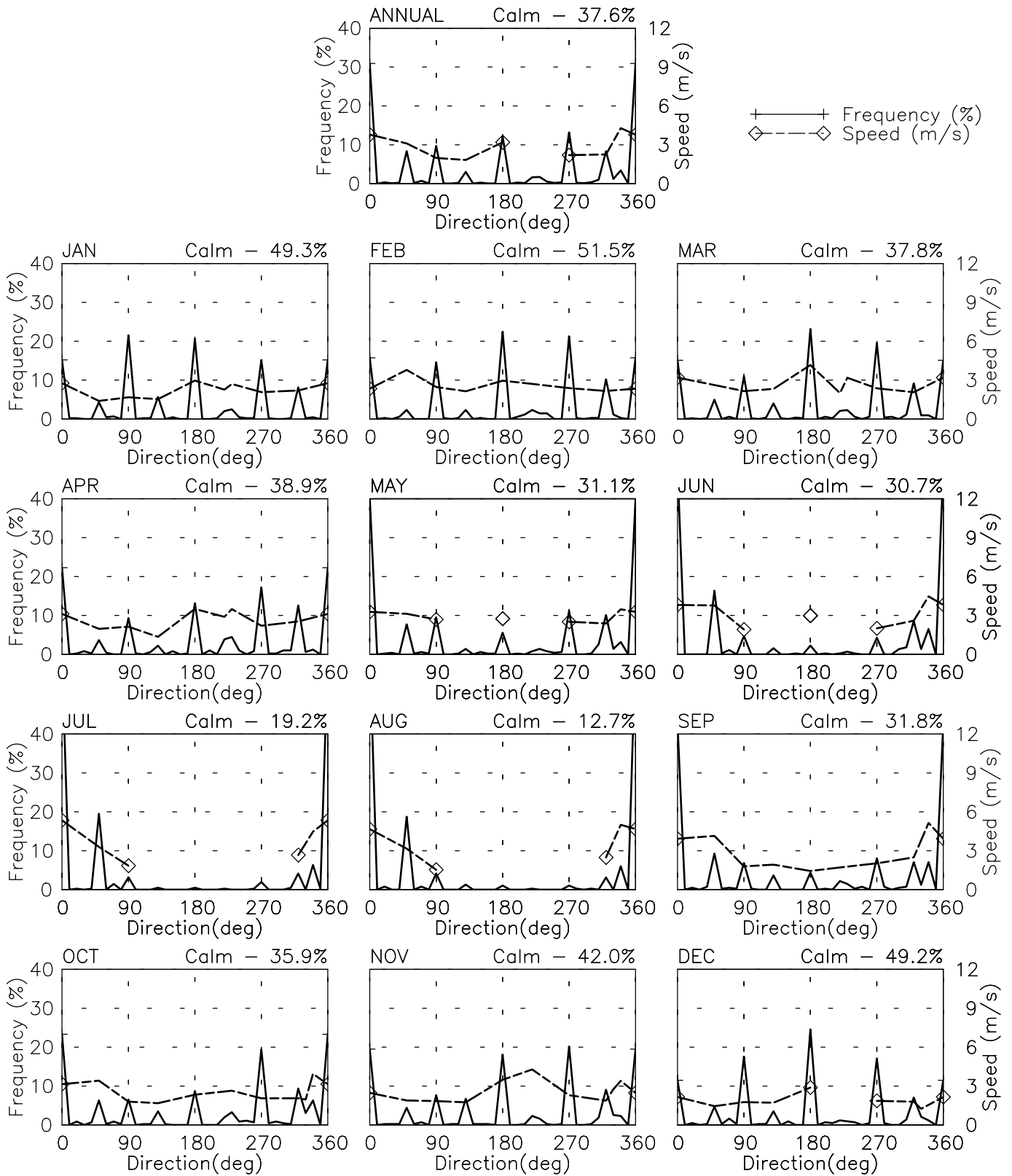
GHELMEEN AF - 409410  
 34° 53' N 65° 18' E - Elev 2070m \*LST=GMT +5 hours NT= +4  
 01/58-12/61 02/73-01/81 06/88-05/89



# FREQUENCY AND SPEED BY DIRECTION

GHELMEEN AF - 409410

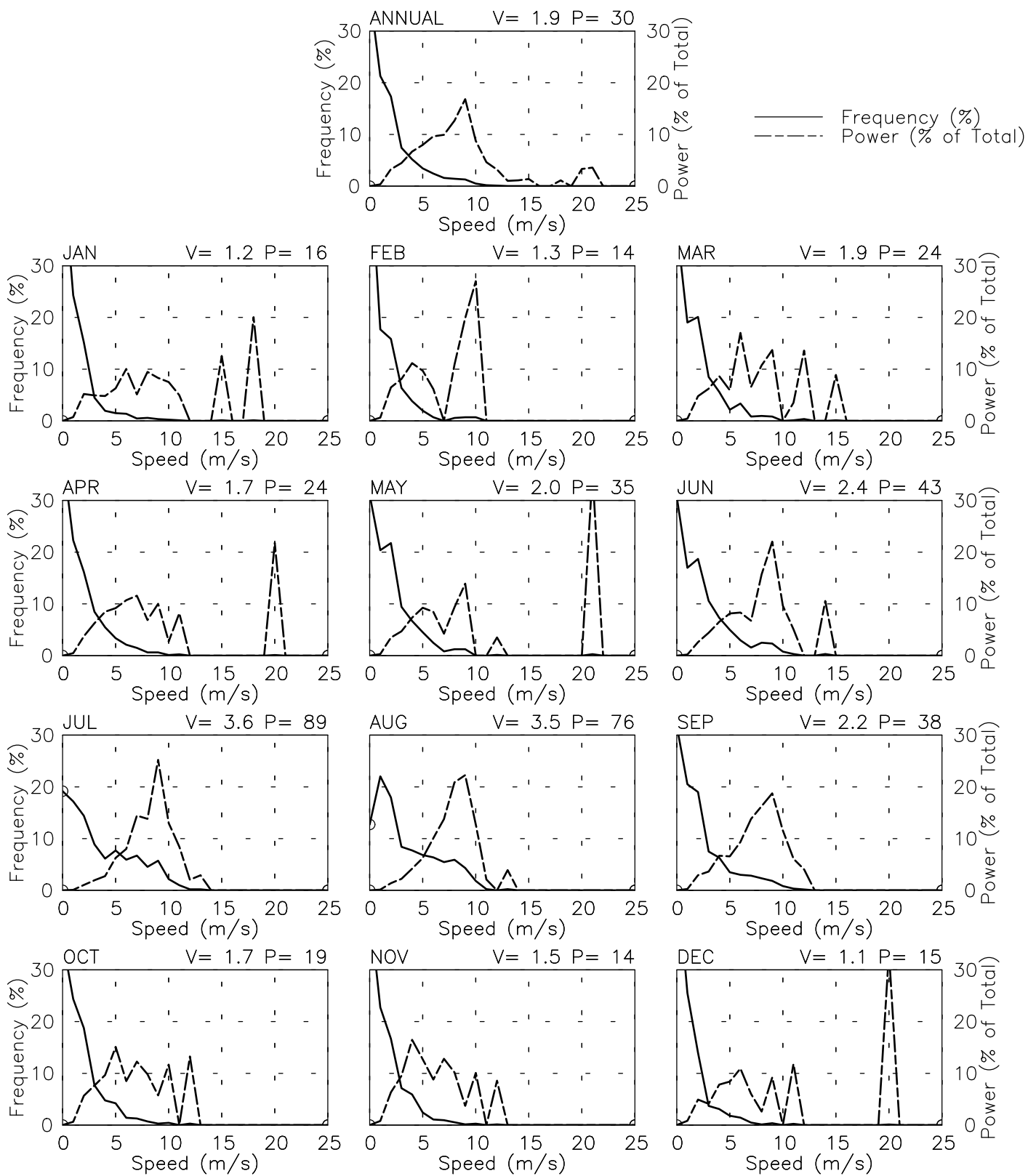
34° 53' N 65° 18' E - Elev 2070m \*LST=GMT +5 hours NT= +4  
 01/58-12/61 02/73-01/81 06/88-05/89



# FREQUENCY OF SPEED & PERCENT OF POWER BY SPEED

GHELMEEN AF - 409410

34° 53' N 65° 18' E - Elev 2070m \*LST=GMT +5 hours NT= +4  
 01/58-12/61 02/73-01/81 06/88-05/89



# PREVAILING DIRECTION & SPEED BY HOUR

GHELMEEN AF - 409410

34° 53' N 65° 18' E - Elev 2070m \*LST=GMT +5 hours NT= +4  
 01/58-12/61 02/73-01/81 06/88-05/89

