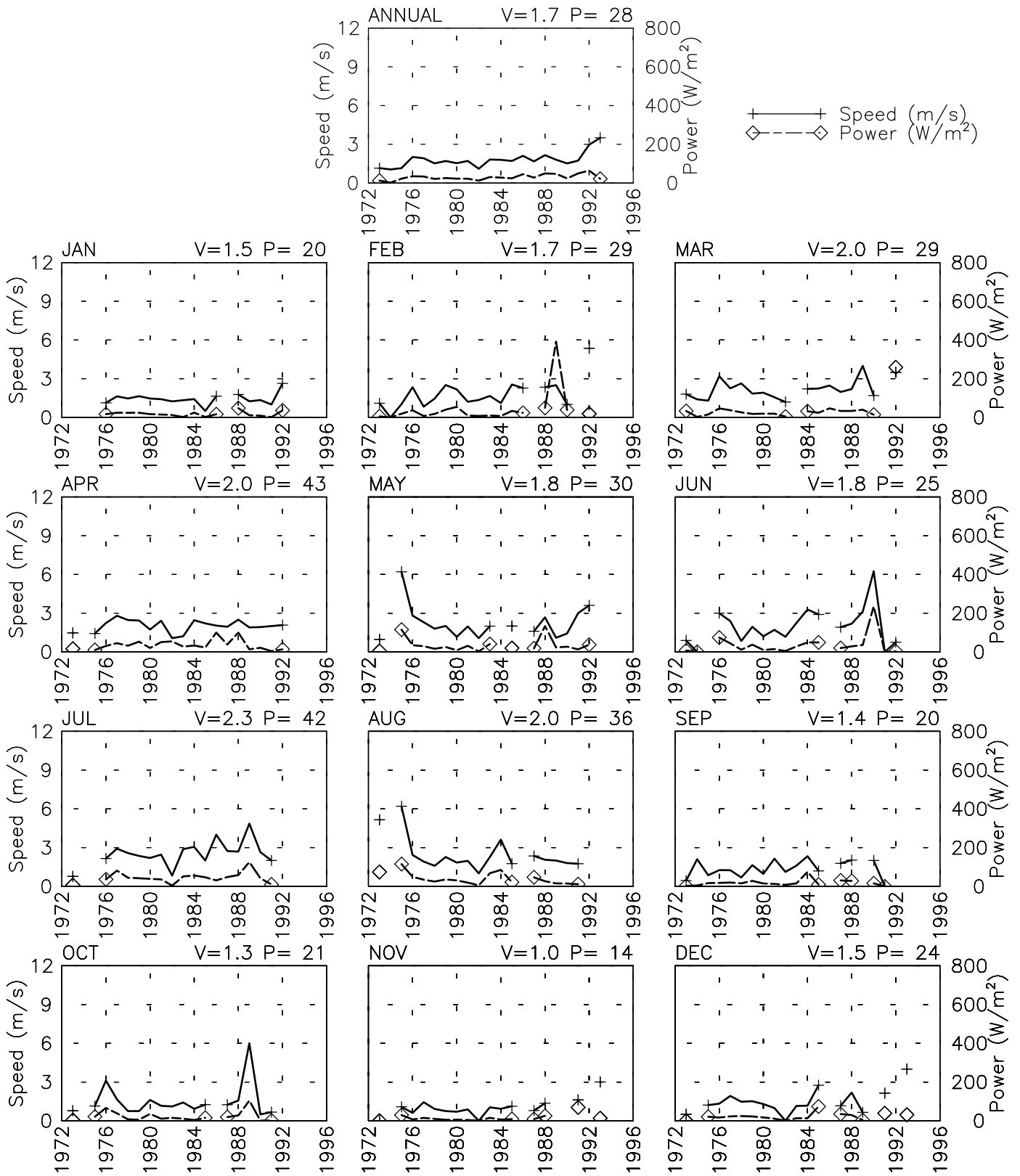


SPEED AND POWER BY YEAR

CHAKHCHARAN AF - 409420

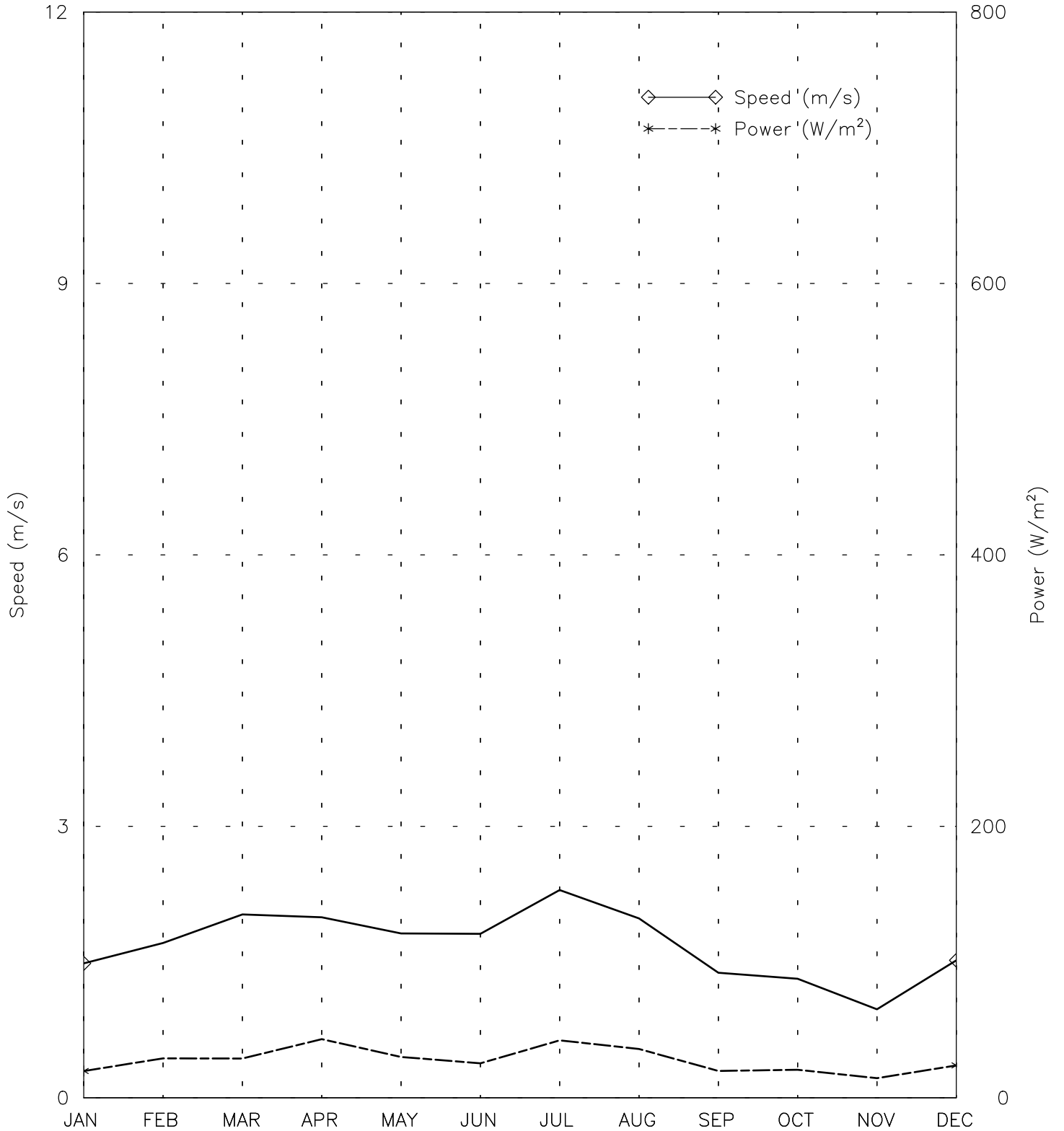
33° 32' N 65° 16' E - Elev 2183m *LST=GMT +5 hours NT= +4
02/73-12/93



SPEED AND POWER BY MONTH

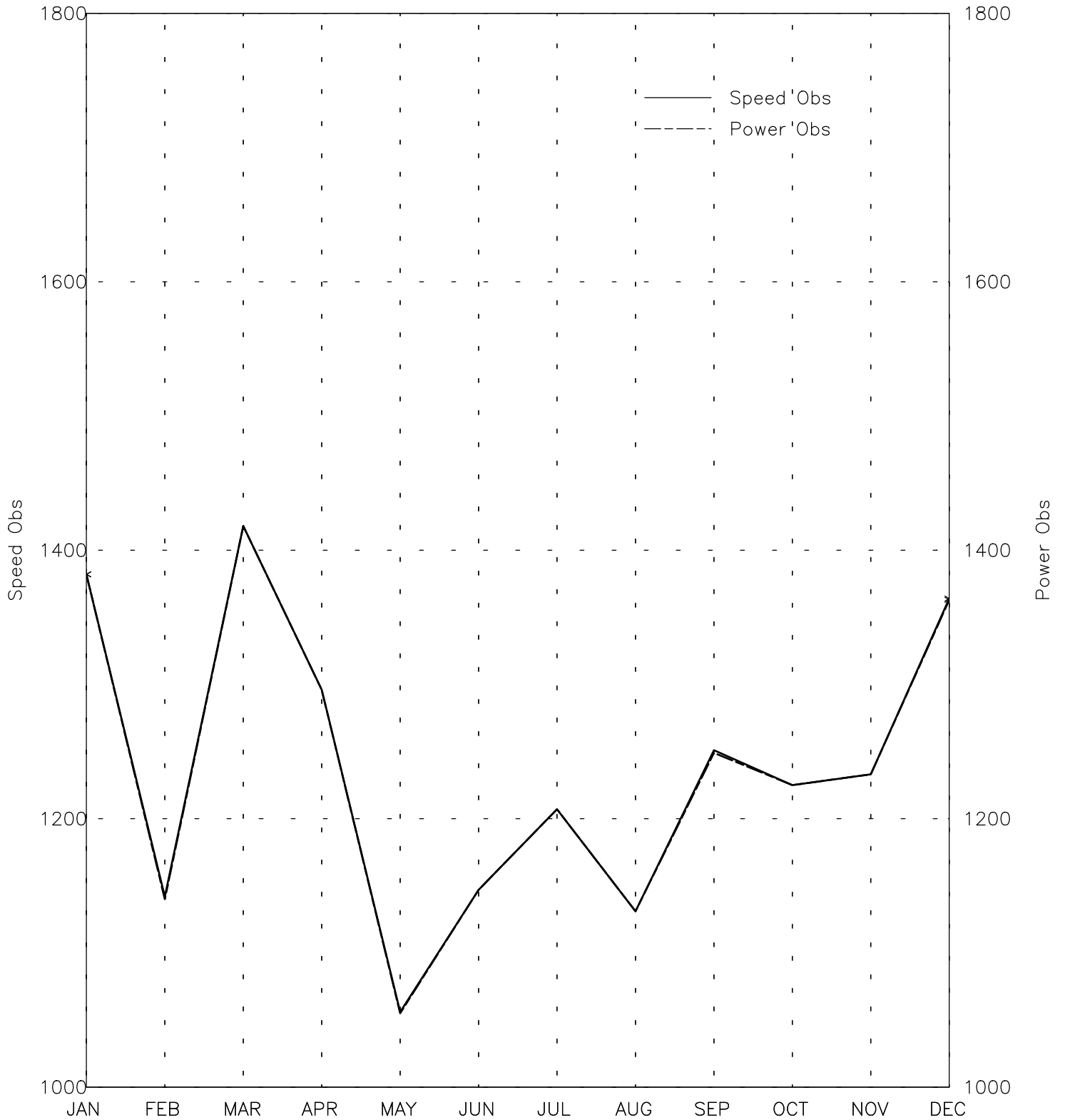
CHAKHCHARAN AF - 409420

33° 32' N 65° 16' E - Elev 2183m *LST=GMT +5 hours NT= +4
02/73-12/93



OBSERVATIONS BY MONTH

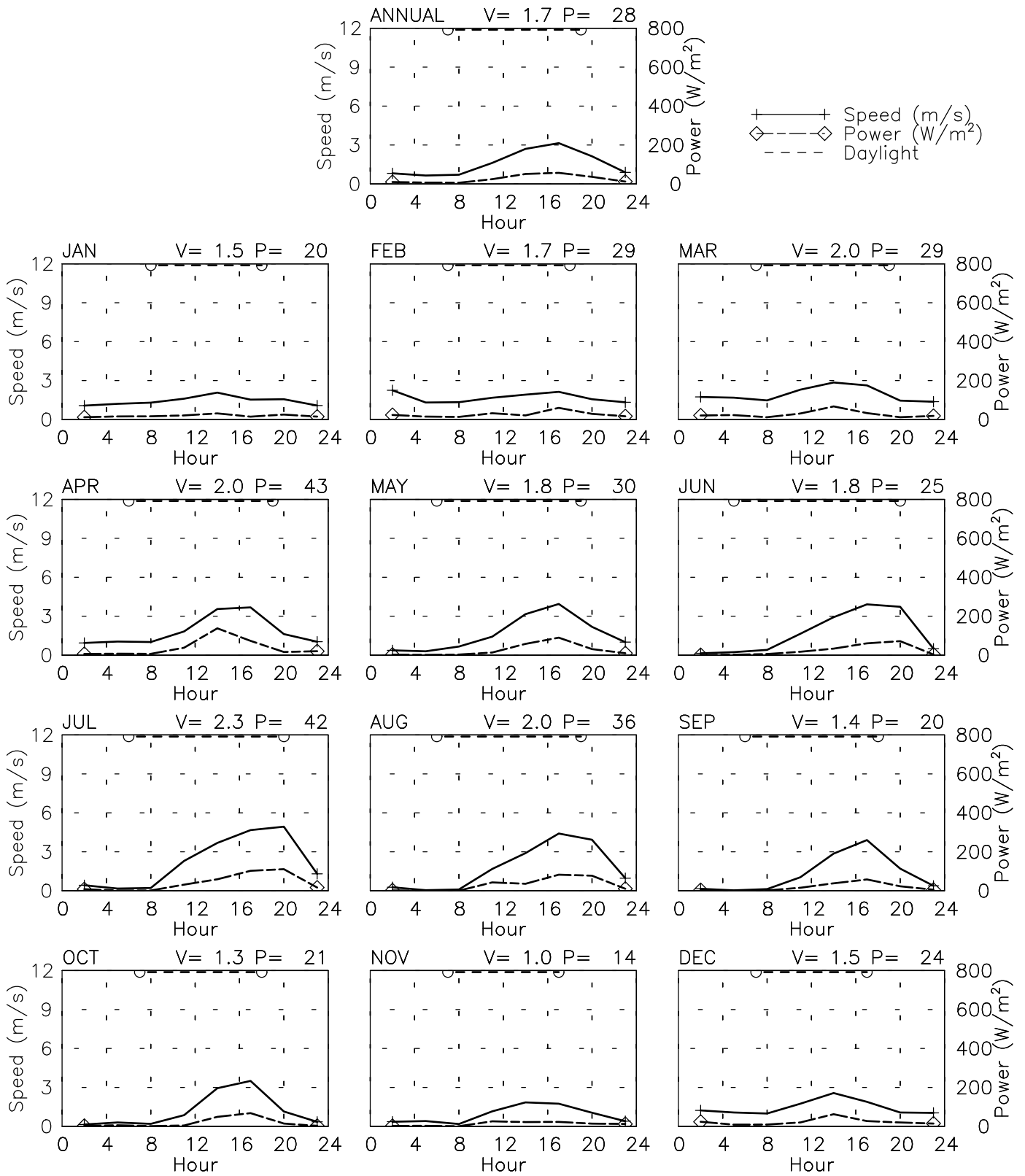
CHAKHCHARAN AF - 409420
33° 32' N 65° 16' E - Elev 2183m *LST=GMT +5 hours NT= +4
02/73-12/93



Month
Tue Aug 8 17:04:13 2006

SPEED AND POWER BY HOUR

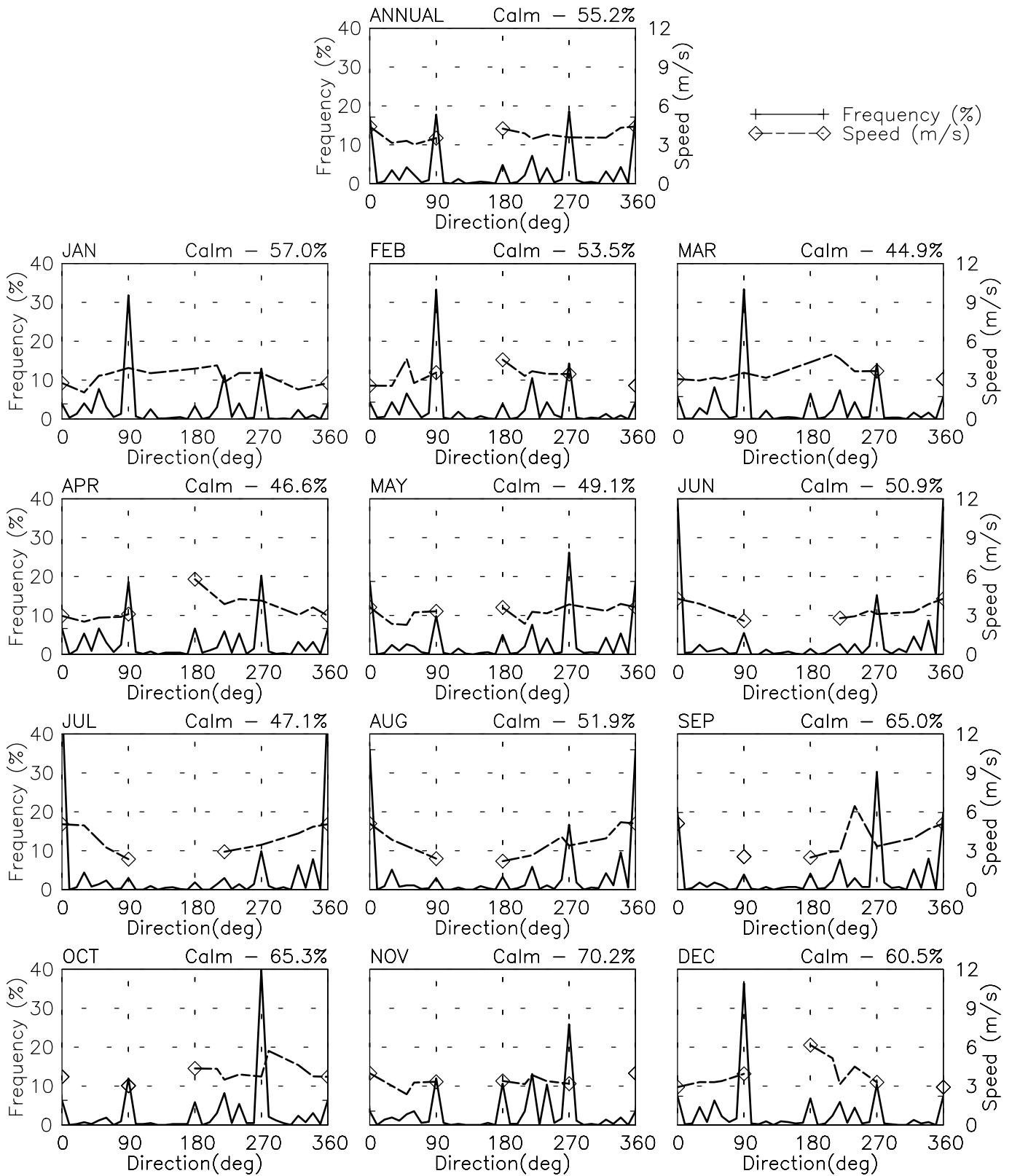
CHAKHCHARAN AF - 409420
 33° 32' N 65° 16' E - Elev 2183m *LST=GMT +5 hours NT= +4
 02/73-12/93



FREQUENCY AND SPEED BY DIRECTION

CHAKHCHARAN AF - 409420

33° 32' N 65° 16' E - Elev 2183m *LST=GMT +5 hours NT= +4
02/73-12/93

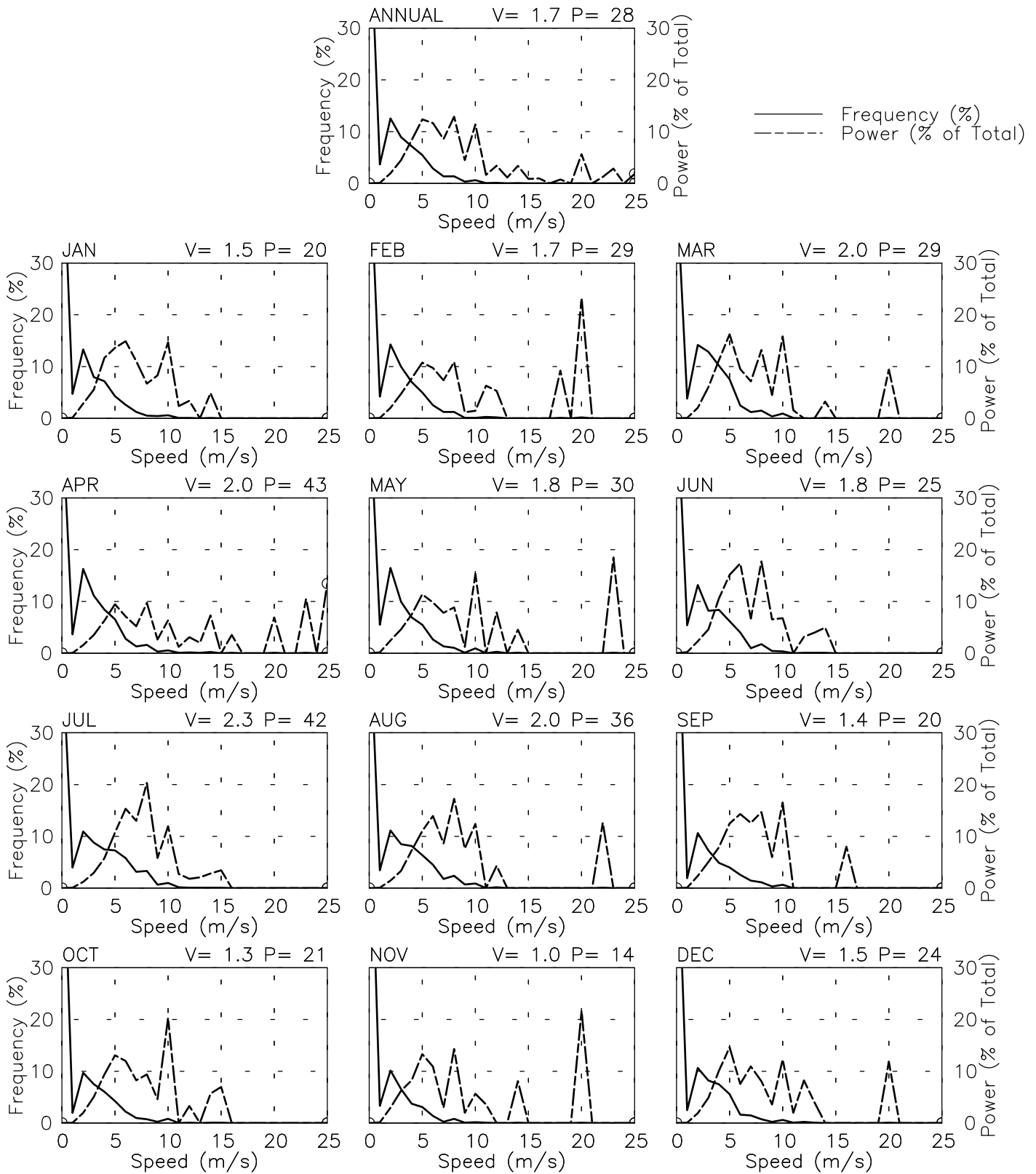


FREQUENCY OF SPEED & PERCENT OF POWER BY SPEED

CHAKHCHARAN AF - 409420

33° 32' N 65° 16' E - Elev 2183m *LST=GMT +5 hours NT= +4

02/73-12/93



PREVAILING DIRECTION & SPEED BY HOUR

CHAKHCHARAN AF - 409420

33° 32' N 65° 16' E - Elev 2183m *LST=GMT +5 hours NT= +4
02/73-12/93

