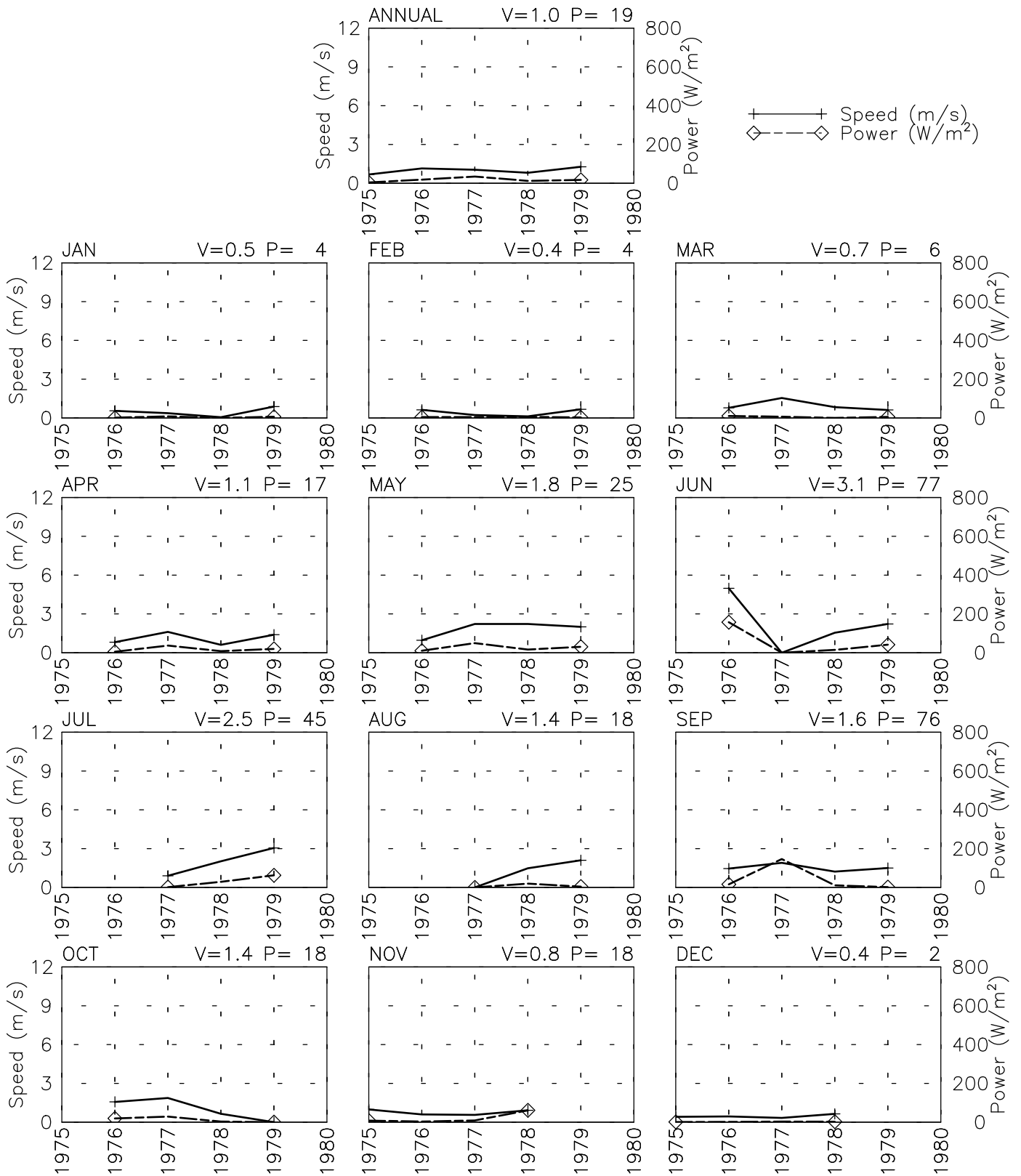


# SPEED AND POWER BY YEAR

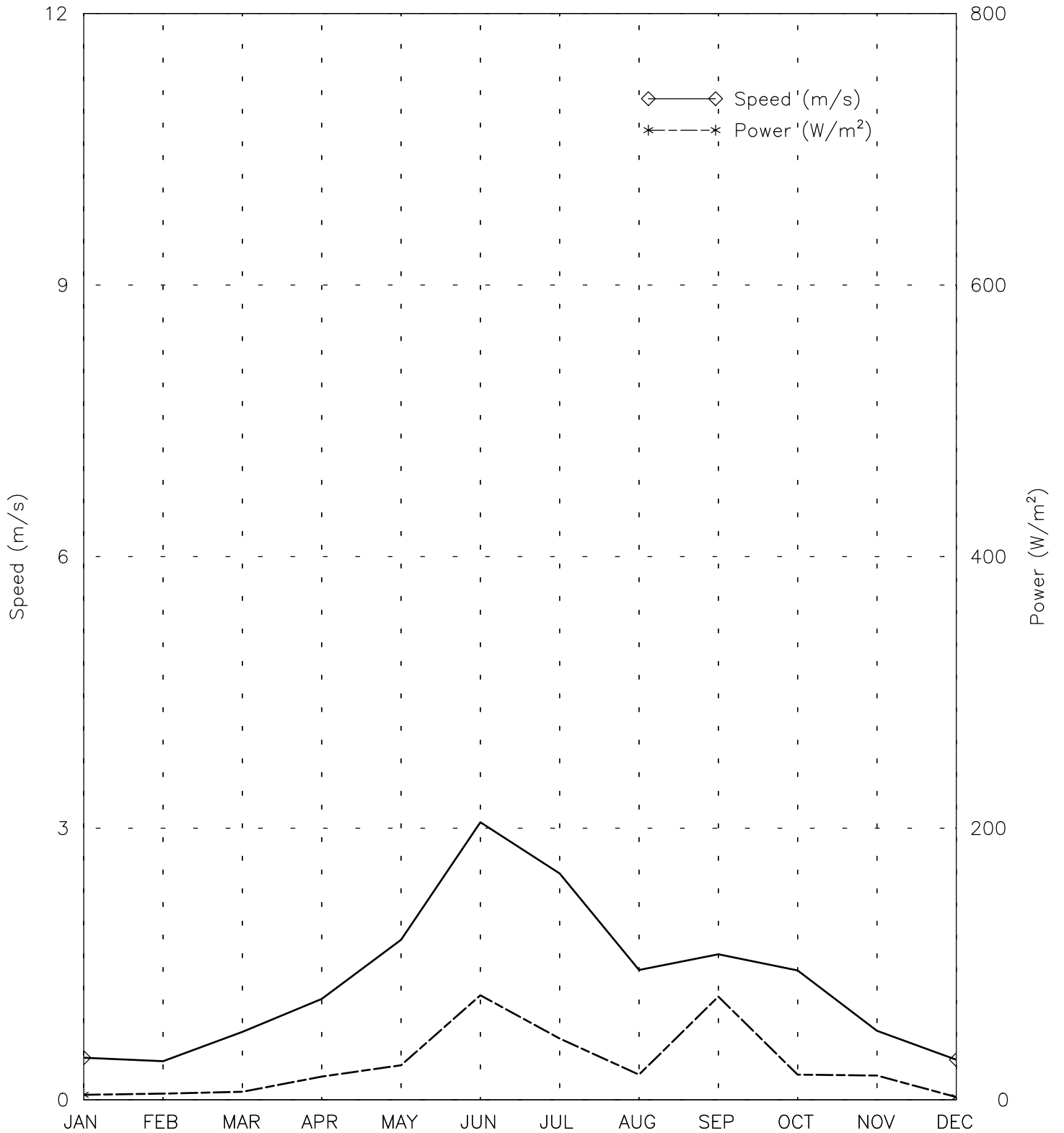
PAN JAO AF - 409460

34° 23' N 67° 02' E - Elev 2710m \*LST=GMT +5 hours NT= +4  
11/75-10/79



# SPEED AND POWER BY MONTH

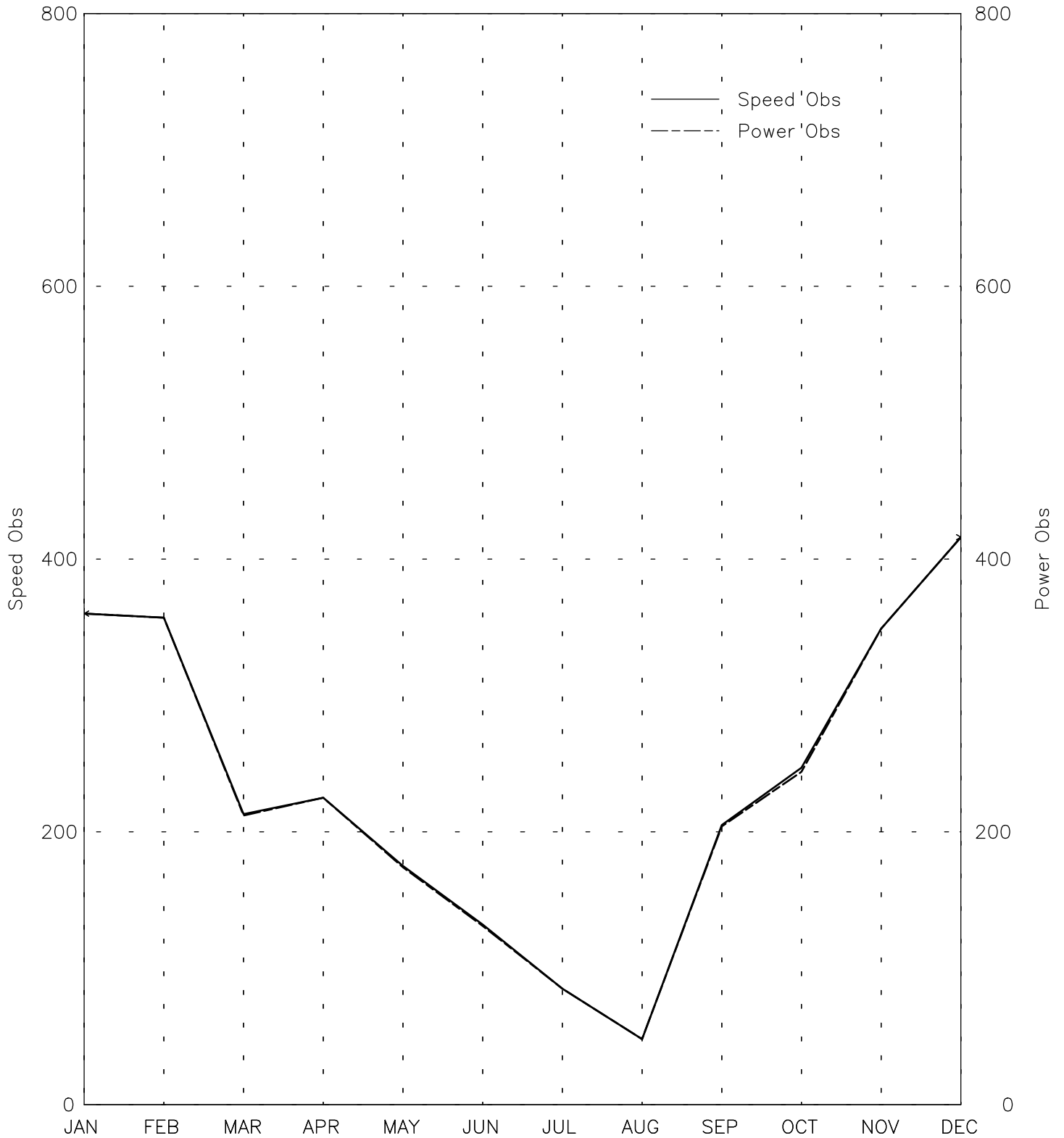
PAN JAO AF - 409460  
34° 23' N 67° 02' E - Elev 2710m \*LST=GMT +5 hours NT= +4  
11/75-10/79



Month  
Tue Aug 8 17:06:17 2006

# OBSERVATIONS BY MONTH

PAN JAO AF - 409460  
34° 23' N 67° 02' E - Elev 2710m \*LST=GMT +5 hours NT= +4  
11/75-10/79

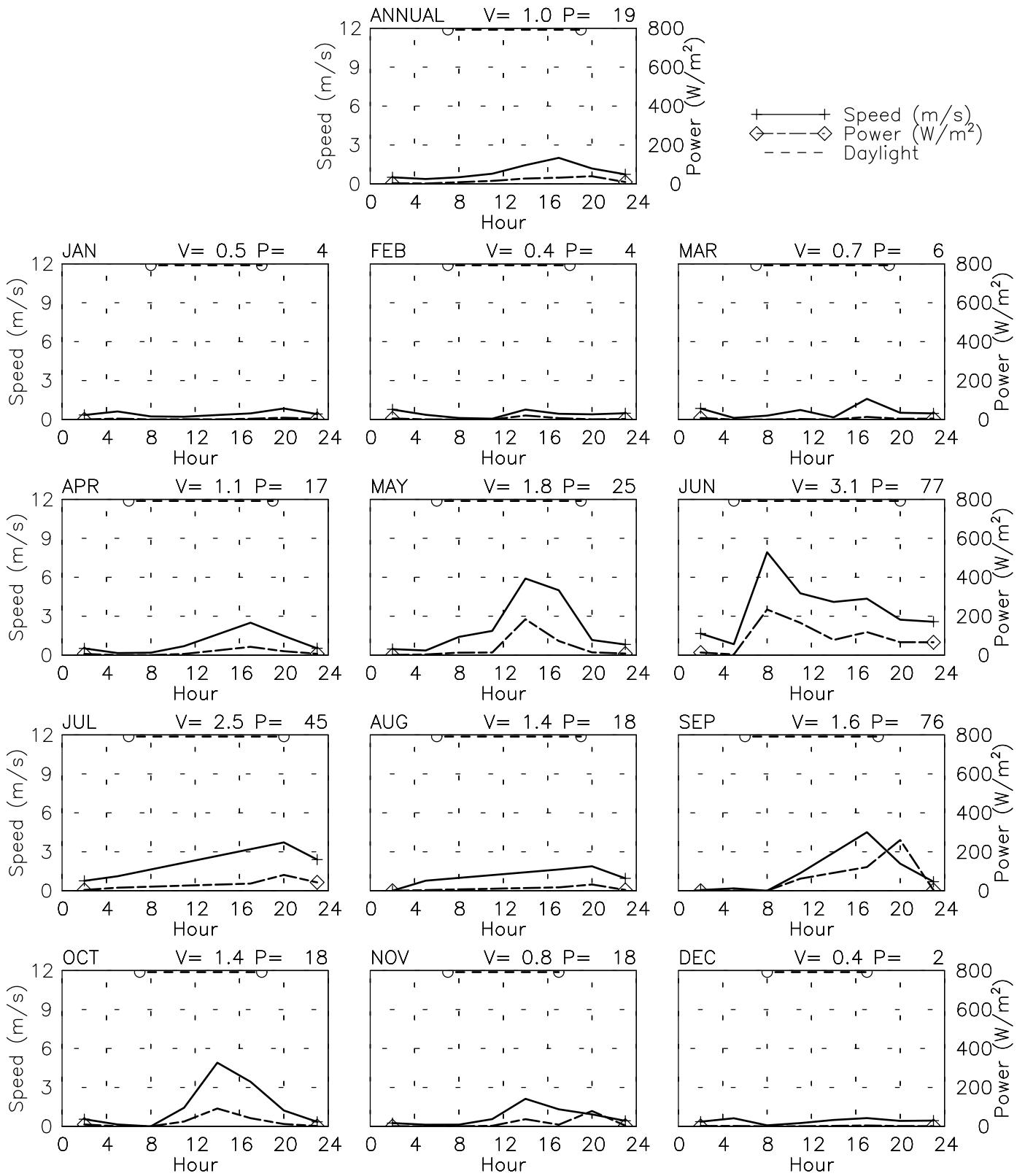


Month  
Tue Aug 8 17:06:18 2006

# SPEED AND POWER BY HOUR

PAN JAO AF - 409460

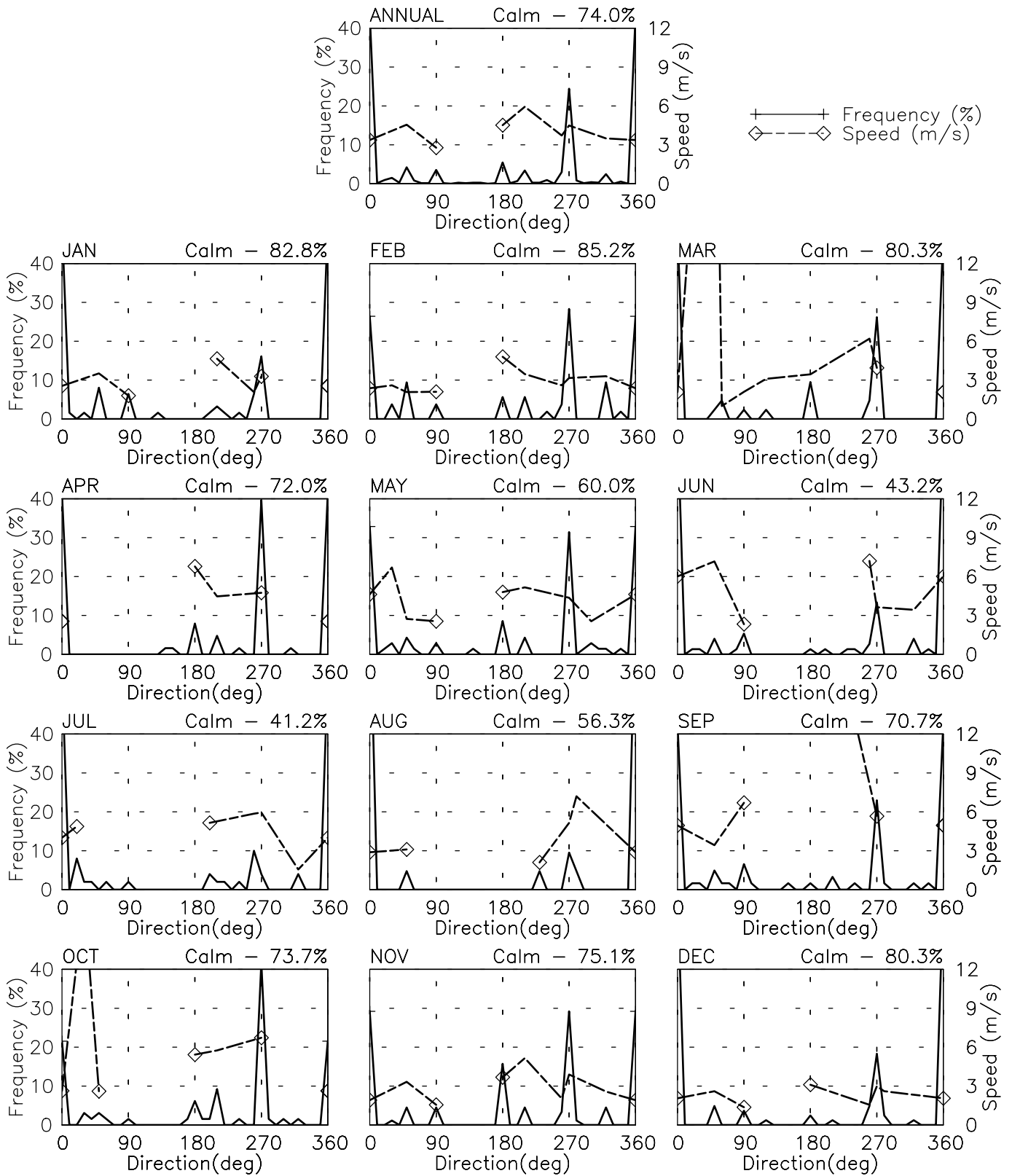
34° 23' N 67° 02' E - Elev 2710m \*LST=GMT +5 hours NT= +4  
11/75-10/79



# FREQUENCY AND SPEED BY DIRECTION

PAN JAO AF - 409460

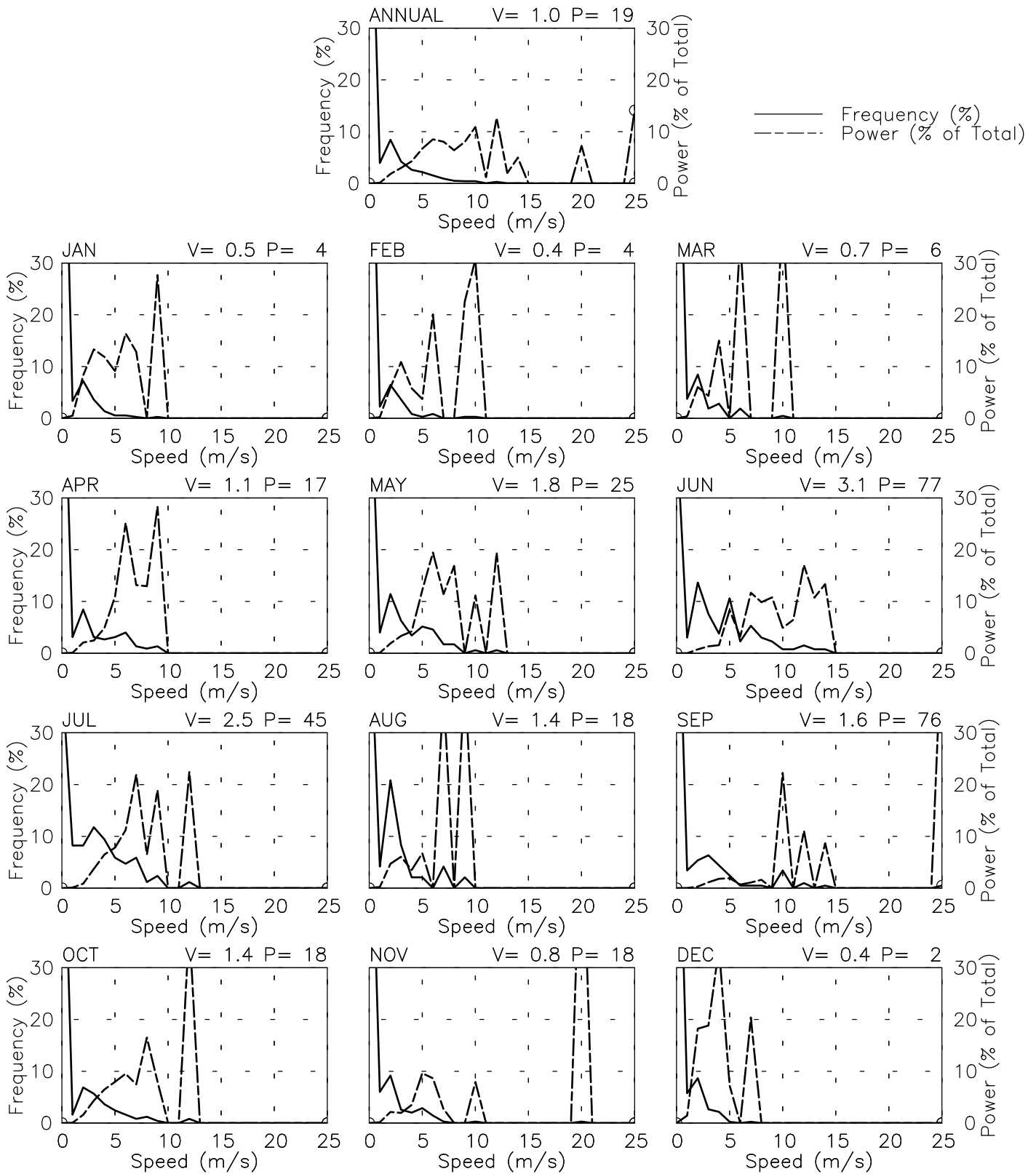
34° 23' N 67° 02' E - Elev 2710m \*LST=GMT +5 hours NT= +4  
11/75-10/79



# FREQUENCY OF SPEED & PERCENT OF POWER BY SPEED

PAN JAO AF - 409460

34° 23' N 67° 02' E - Elev 2710m \*LST=GMT +5 hours NT= +4  
11/75-10/79



# PREVAILING DIRECTION & SPEED BY HOUR

PAN JAO AF - 409460

34° 23' N 67° 02' E - Elev 2710m \*LST=GMT +5 hours NT= +4  
11/75-10/79

