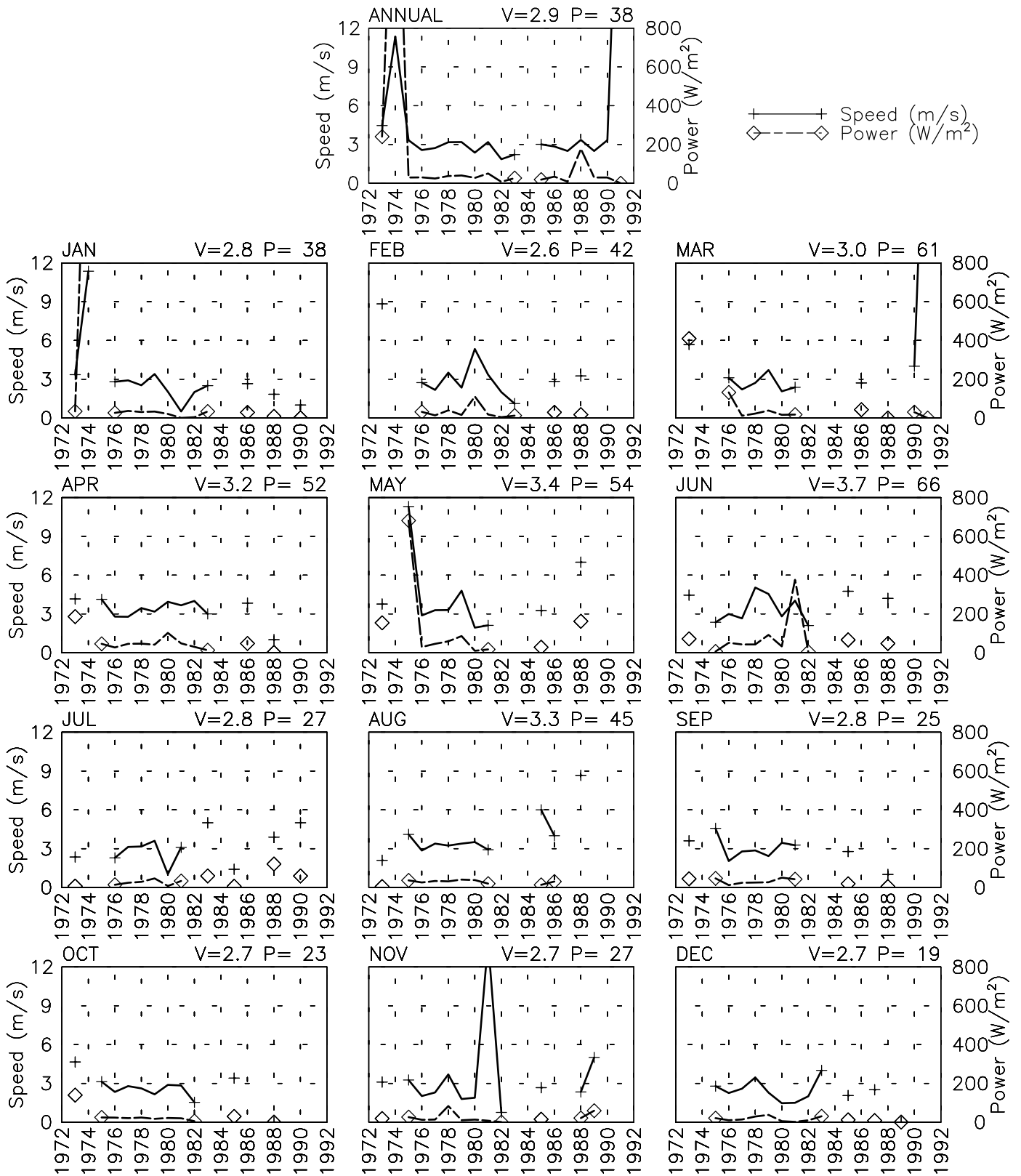


SPEED AND POWER BY YEAR

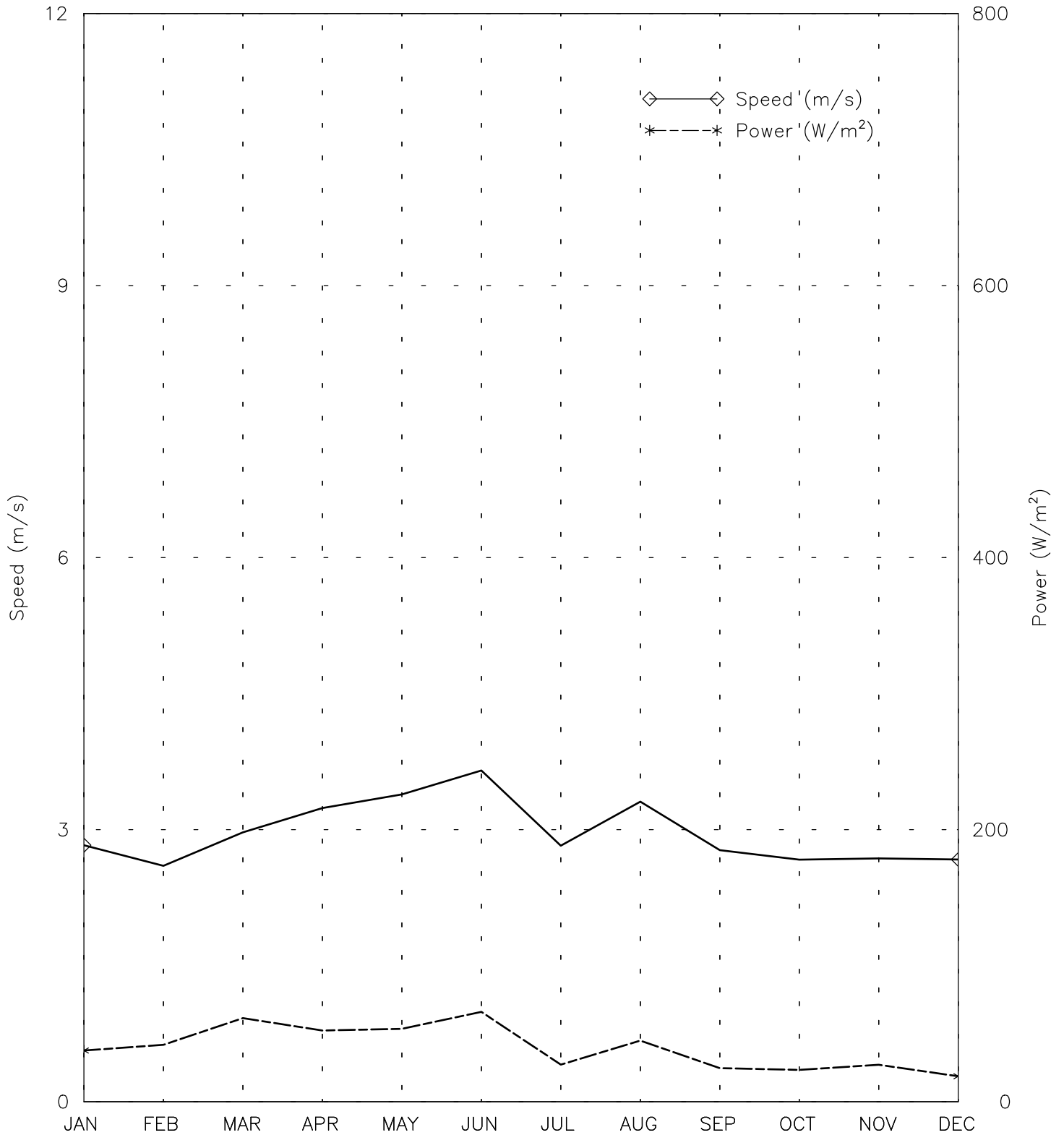
GARDIZ AF - 409700

33° 37' N 69° 14' E - Elev 2350m *LST=GMT +5 hours NT= +5
01/73-12/83 05/85-03/91



SPEED AND POWER BY MONTH

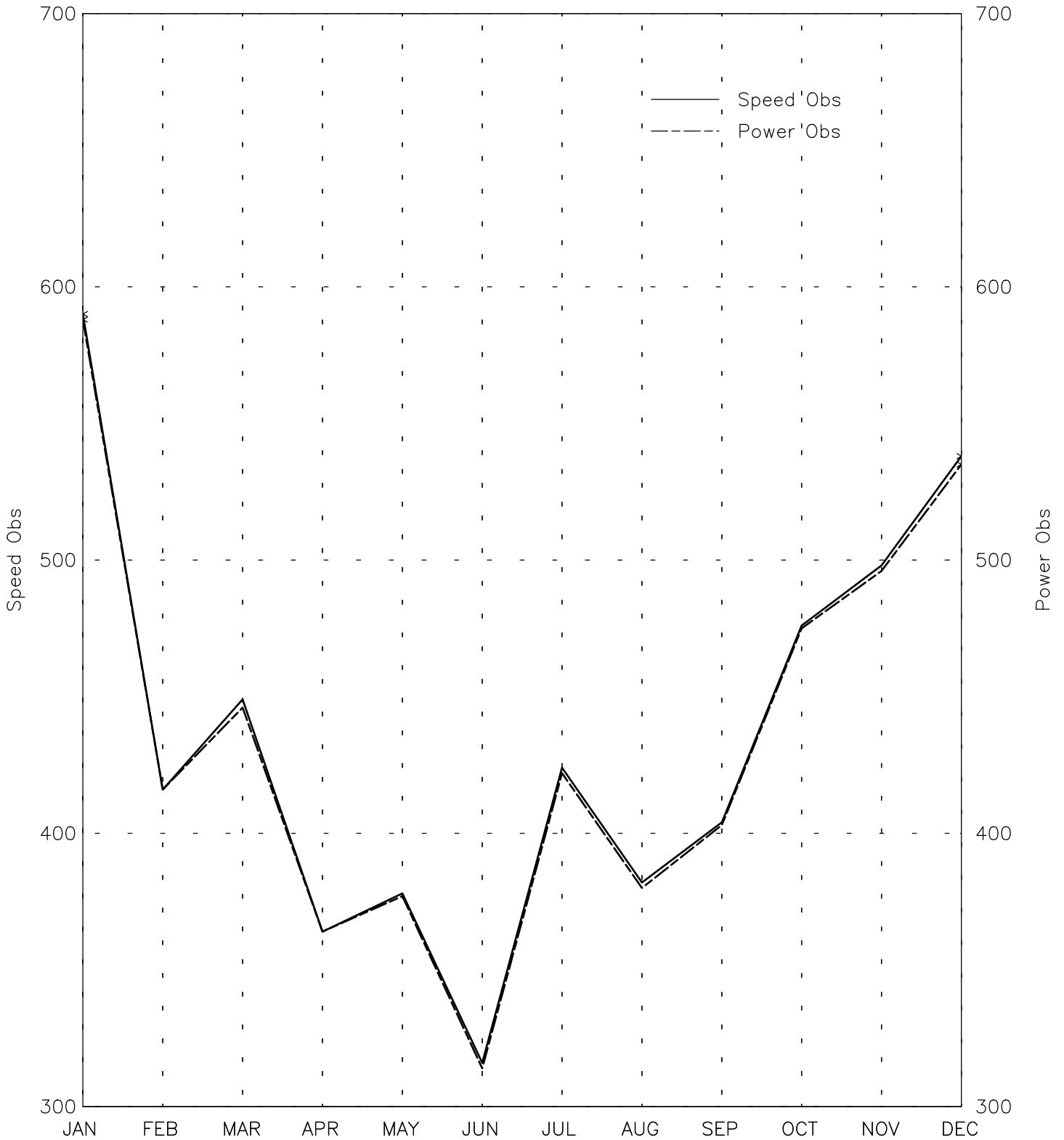
GARDIZ AF - 409700
33° 37' N 69° 14' E - Elev 2350m *LST=GMT +5 hours NT= +5
01/73-12/83 05/85-03/91



OBSERVATIONS BY MONTH

GARDIZ AF - 409700

33° 37' N 69° 14' E - Elev 2350m *LST=GMT +5 hours NT= +5
01/73-12/83 05/85-03/91



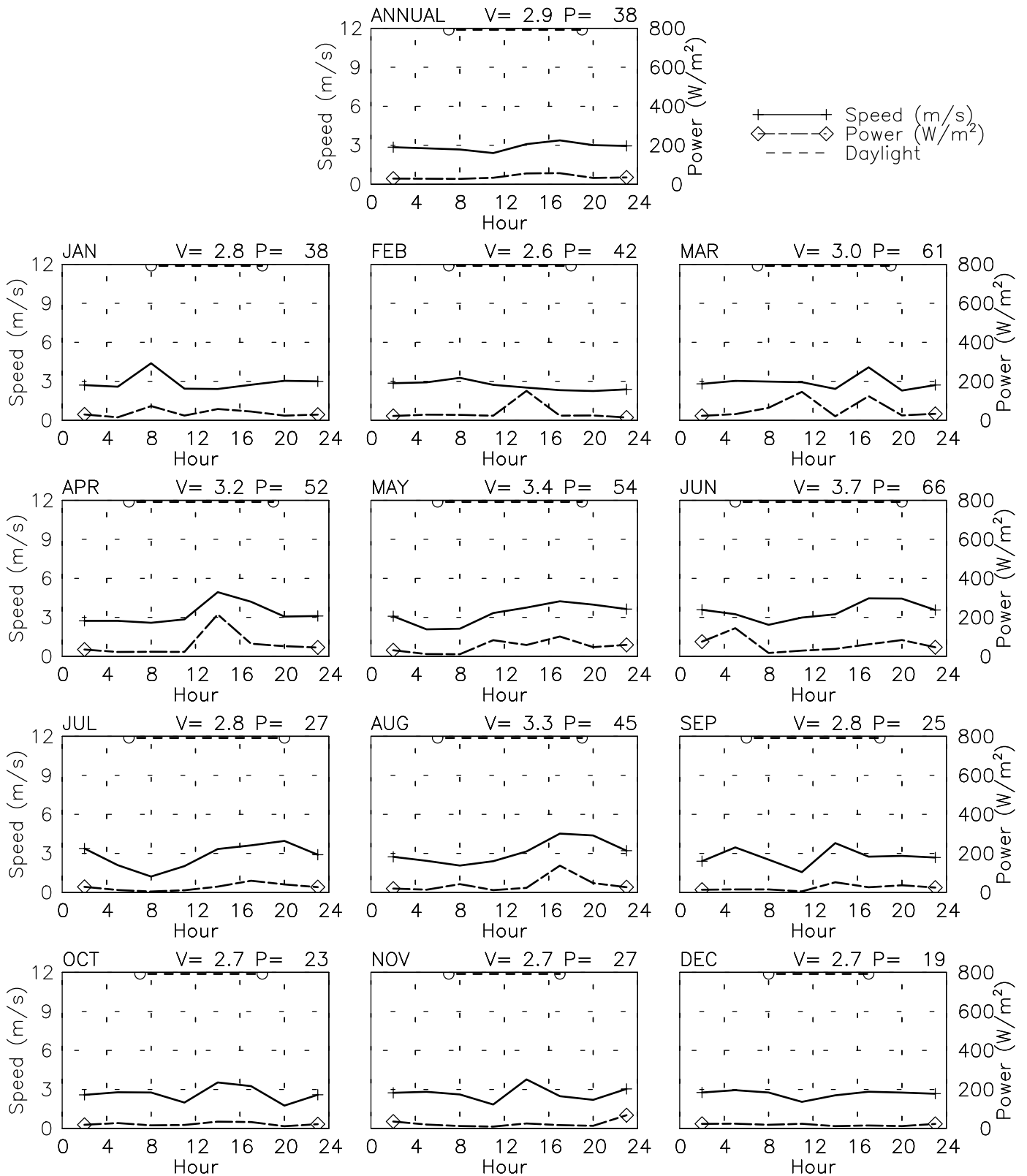
Month
Tue Aug 8 17:05:12 2006

SPEED AND POWER BY HOUR

GARDIZ AF - 409700

33° 37' N 69° 14' E - Elev 2350m *LST=GMT +5 hours NT= +5

01/73-12/83 05/85-03/91

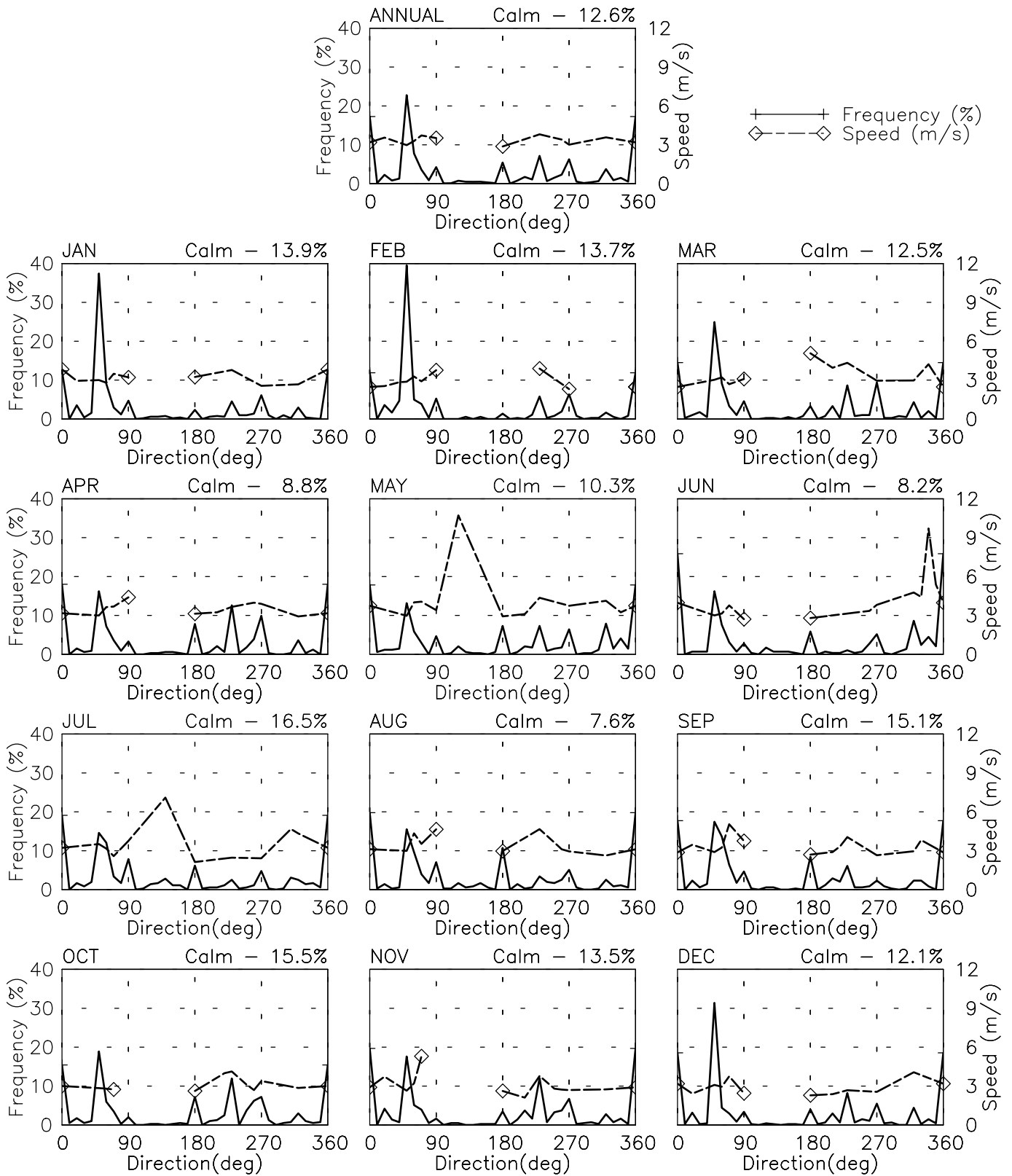


FREQUENCY AND SPEED BY DIRECTION

GARDIZ AF - 409700

33° 37' N 69° 14' E - Elev 2350m *LST=GMT +5 hours NT= +5

01/73-12/83 05/85-03/91

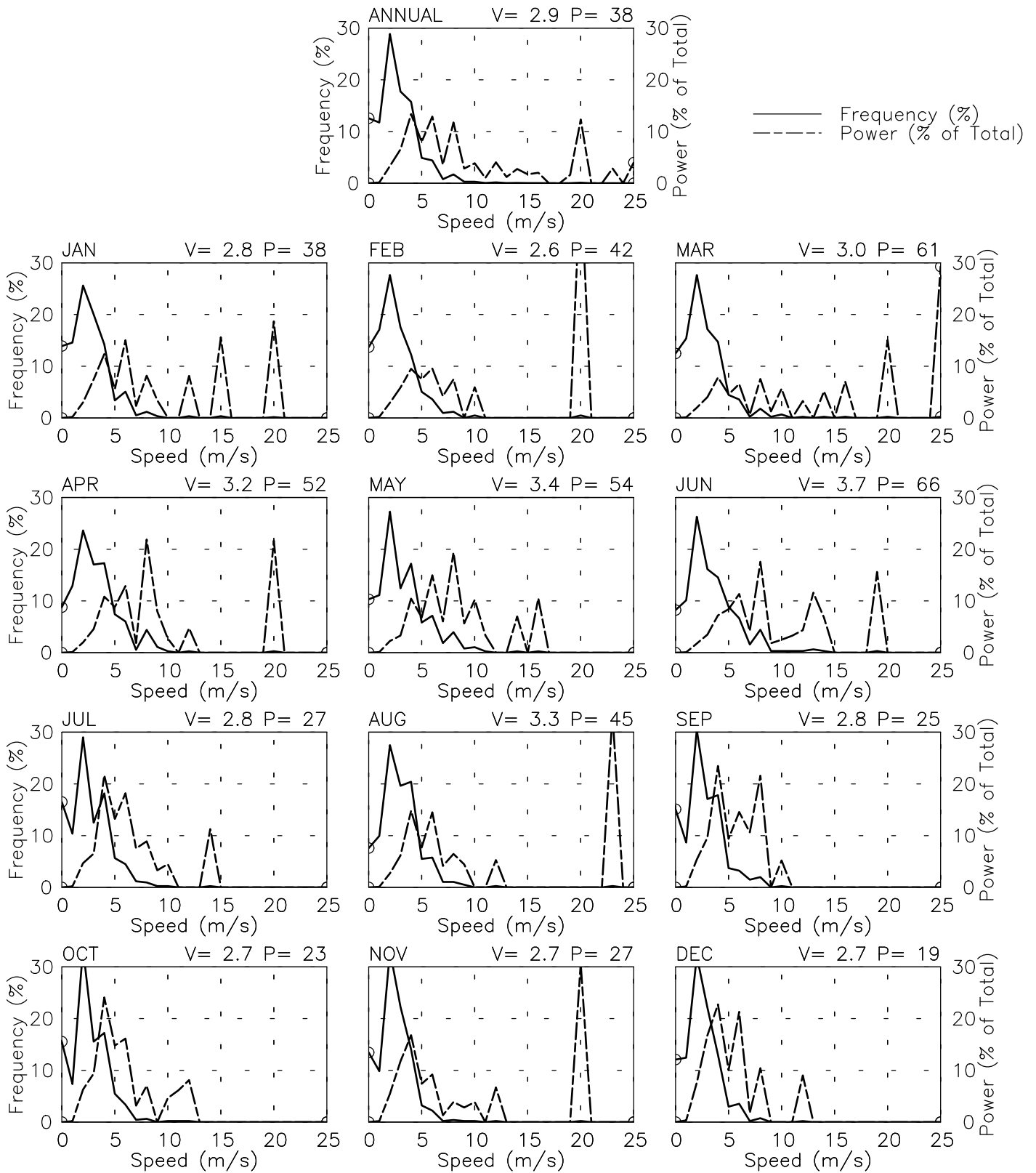


FREQUENCY OF SPEED & PERCENT OF POWER BY SPEED

GARDIZ AF - 409700

33° 37' N 69° 14' E - Elev 2350m *LST=GMT +5 hours NT= +5

01/73-12/83 05/85-03/91



PREVAILING DIRECTION & SPEED BY HOUR

GARDIZ AF - 409700

33° 37' N 69° 14' E - Elev 2350m *LST=GMT +5 hours NT= +5
01/73-12/83 05/85-03/91

