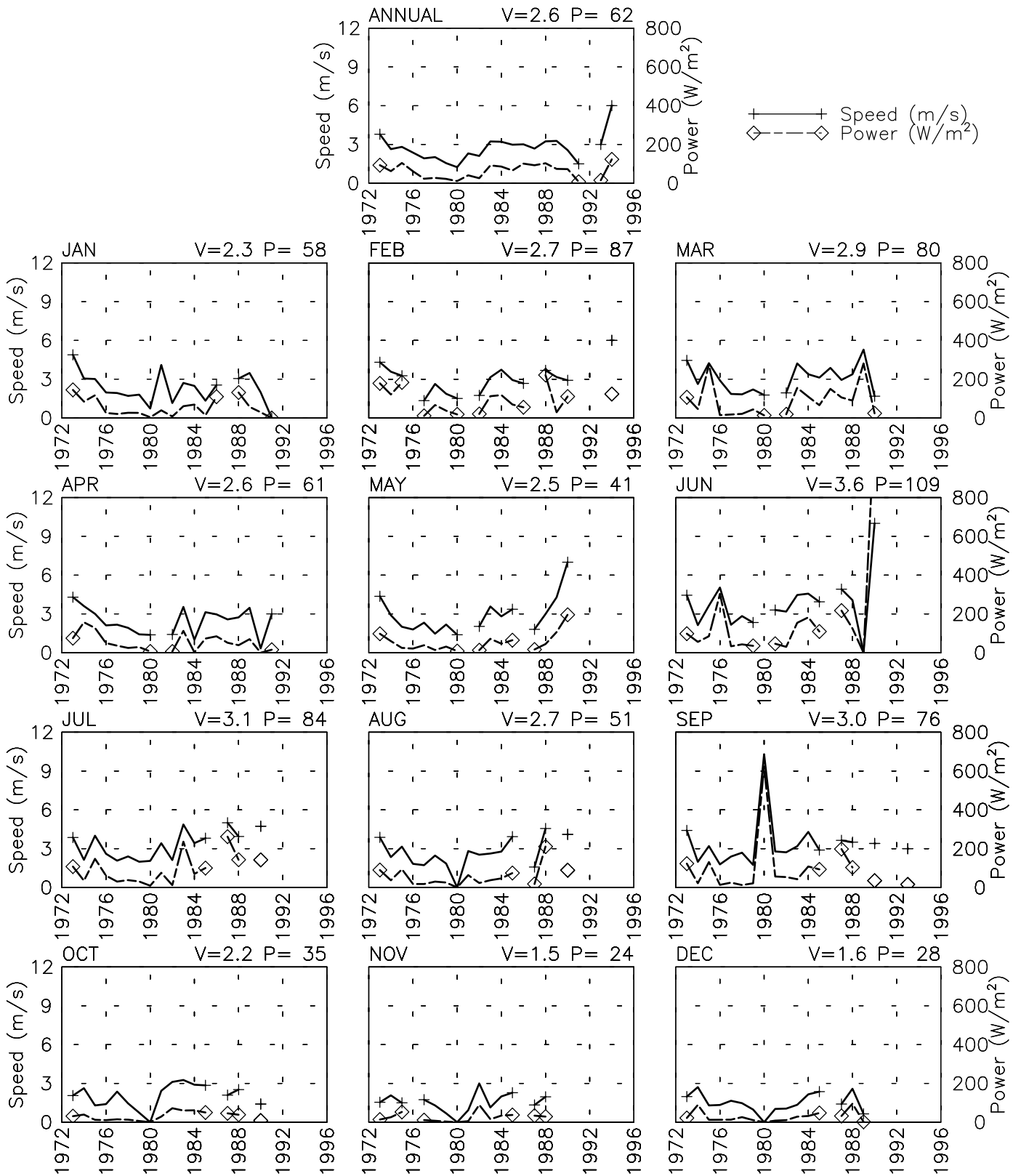


SPEED AND POWER BY YEAR

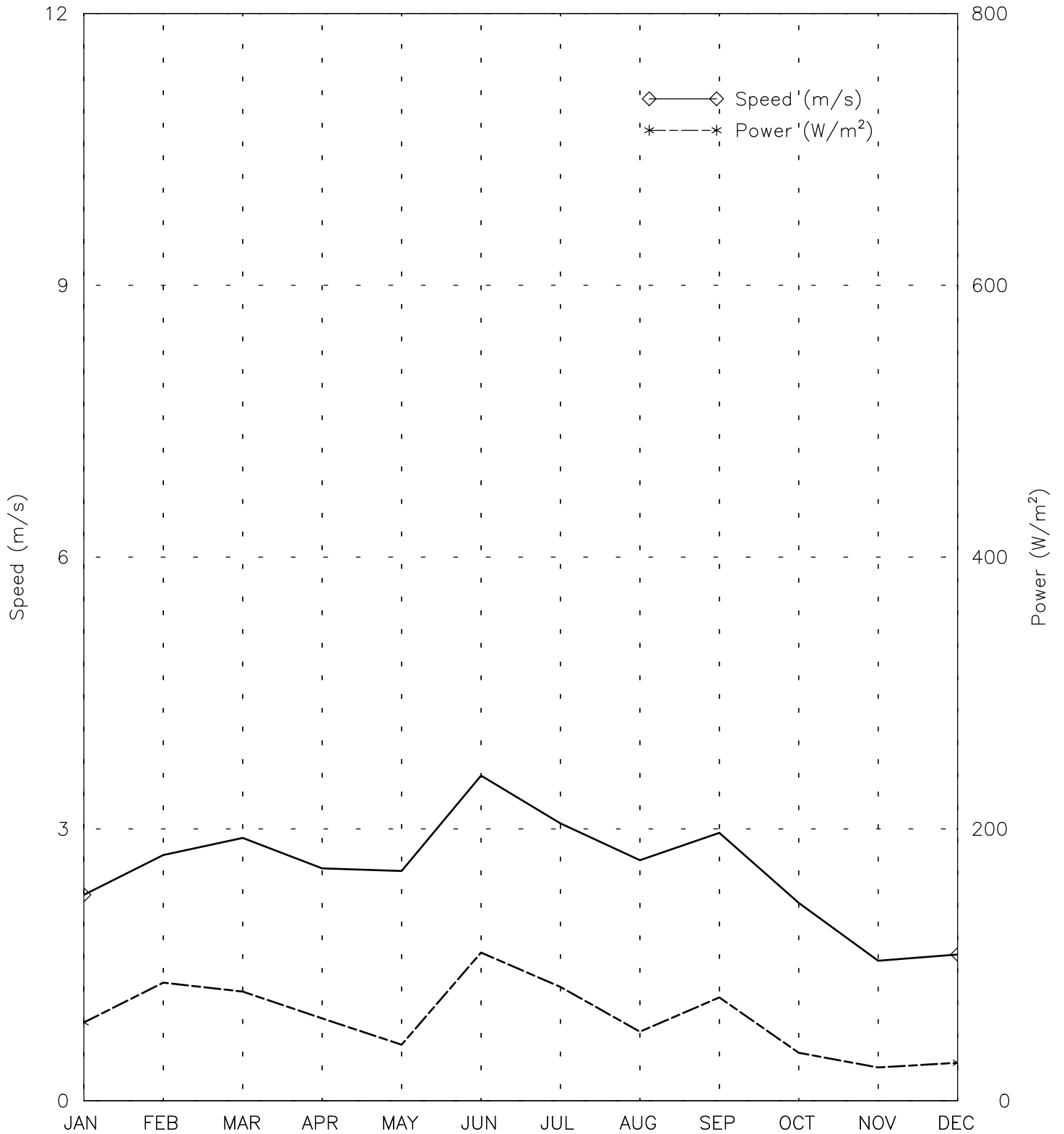
FARAH AF - 409740

32° 22' N 62° 11' E - Elev 700m *LST=GMT +5 hours NT= +4
01/73-04/91 09/93-02/94



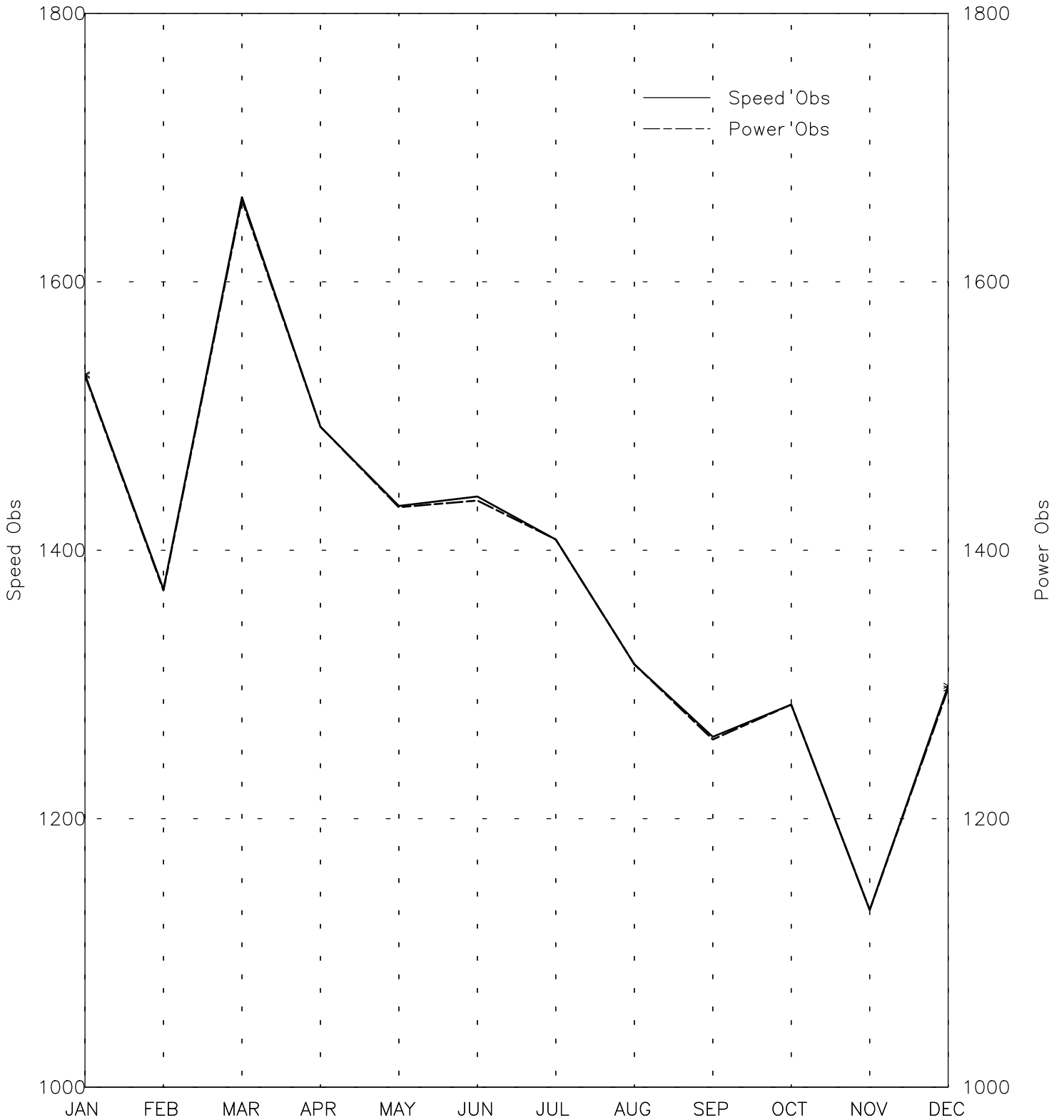
SPEED AND POWER BY MONTH

FARAH AF - 409740
32° 22' N 62° 11' E - Elev 700m *LST=GMT +5 hours NT= +4
01/73-04/91 09/93-02/94



OBSERVATIONS BY MONTH

FARAH AF - 409740
32° 22' N 62° 11' E - Elev 700m *LST=GMT +5 hours NT= +4
01/73-04/91 09/93-02/94

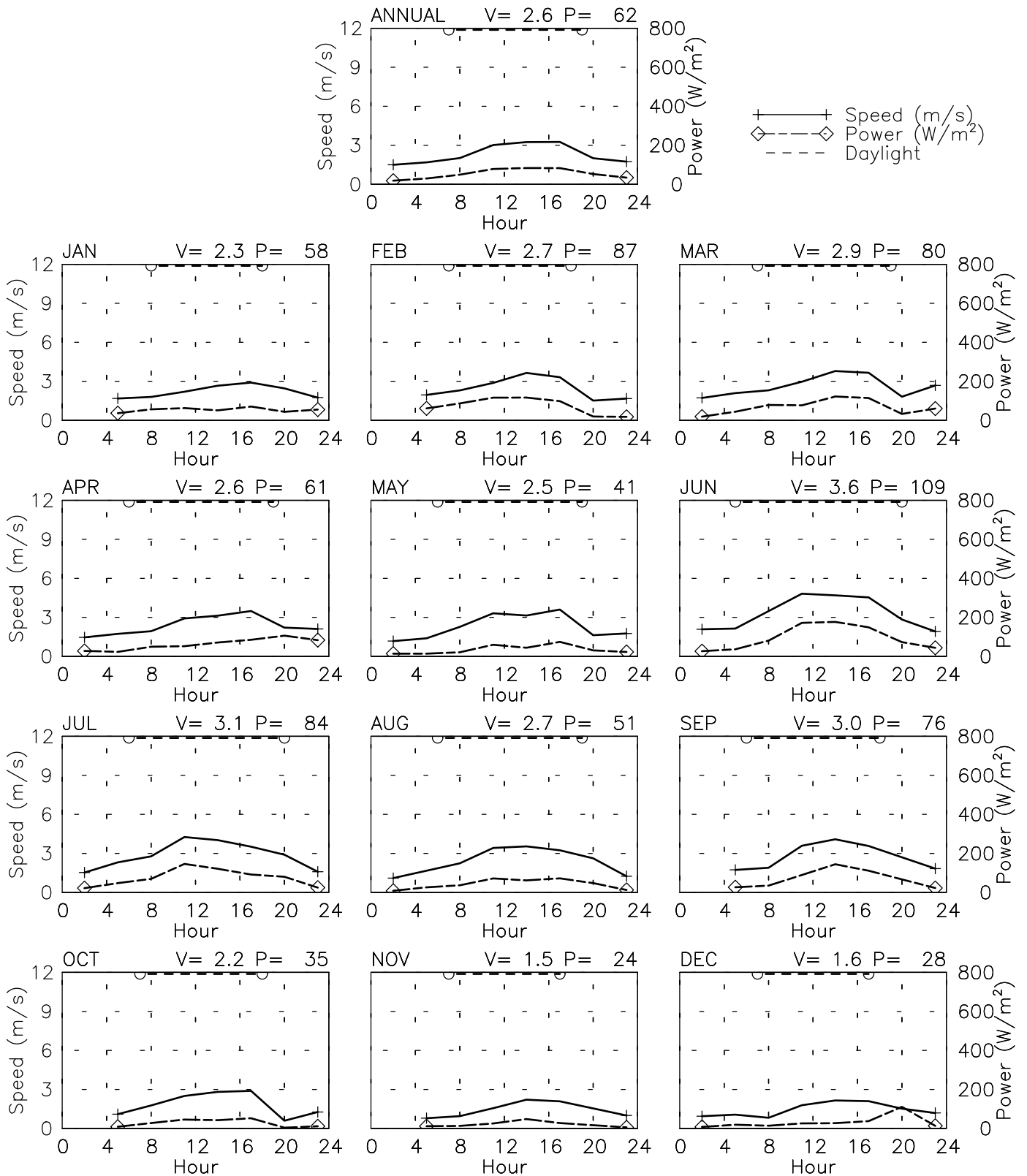


SPEED AND POWER BY HOUR

FARAH AF - 409740

32° 22' N 62° 11' E - Elev 700m *LST=GMT +5 hours NT= +4

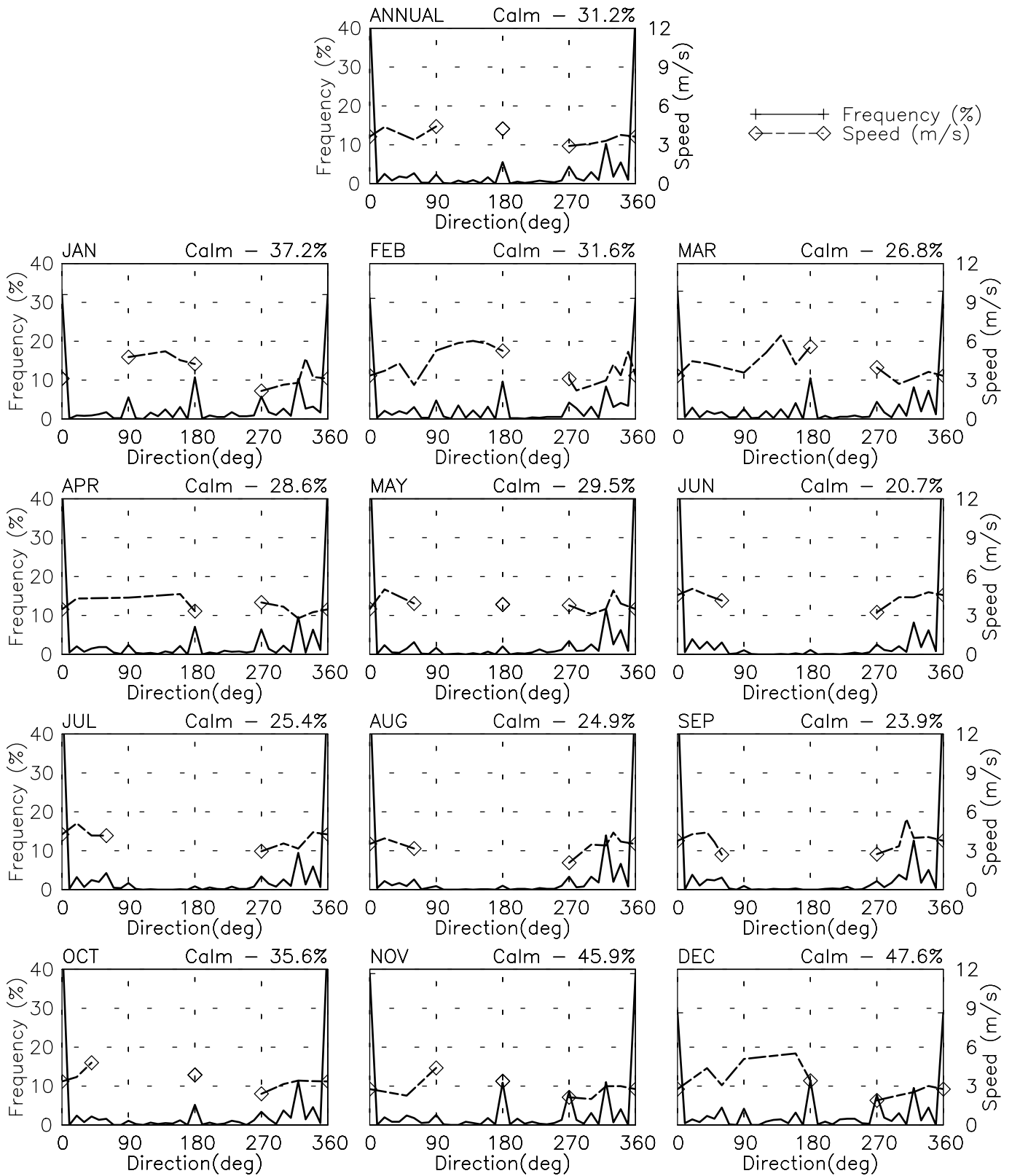
01/73-04/91 09/93-02/94



FREQUENCY AND SPEED BY DIRECTION

FARAH AF - 409740

32° 22' N 62° 11' E - Elev 700m *LST=GMT +5 hours NT= +4
 01/73-04/91 09/93-02/94

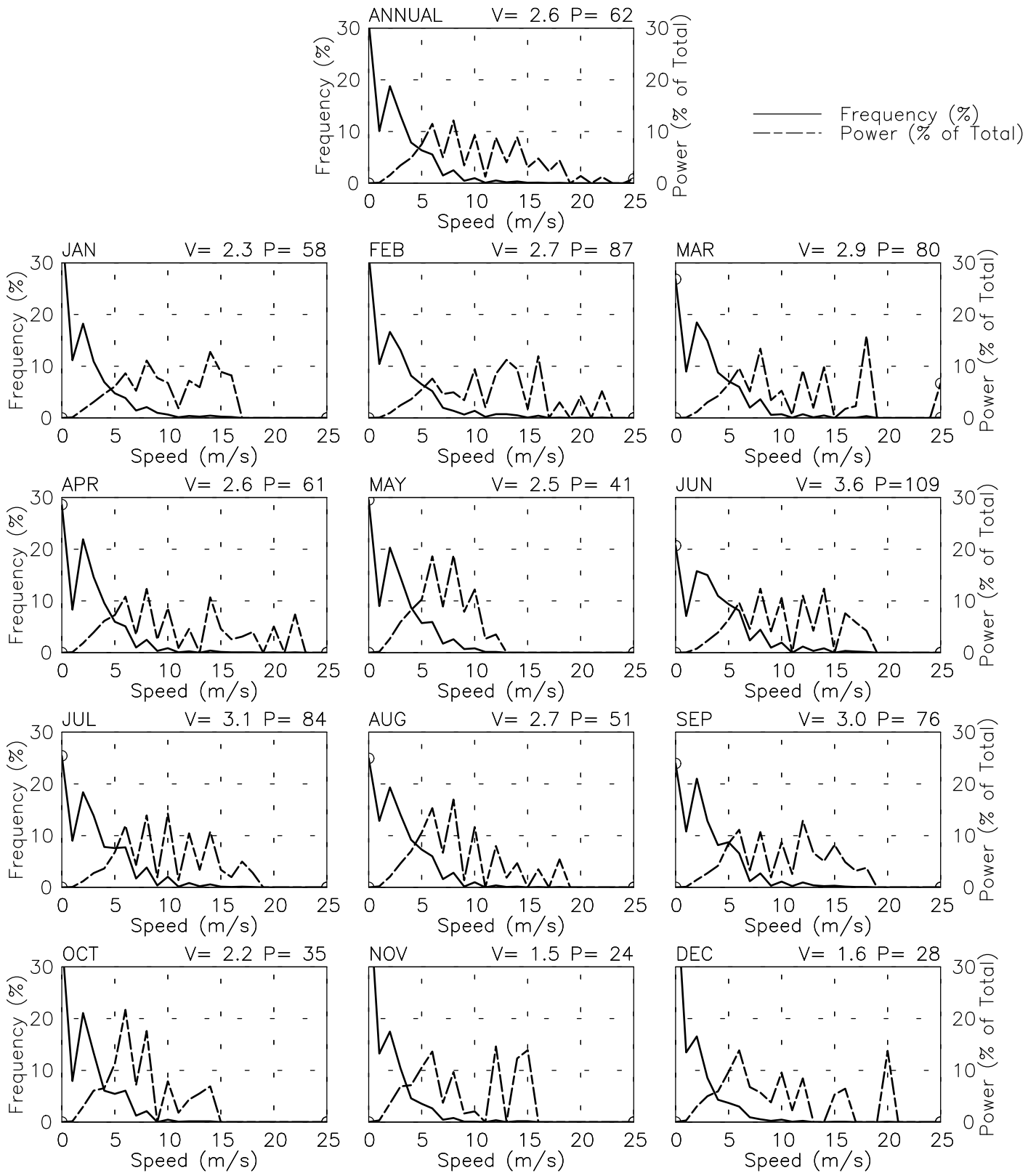


FREQUENCY OF SPEED & PERCENT OF POWER BY SPEED

FARAH AF - 409740

32° 22' N 62° 11' E - Elev 700m *LST=GMT +5 hours NT= +4

01/73-04/91 09/93-02/94



PREVAILING DIRECTION & SPEED BY HOUR

FARAH AF - 409740

32° 22' N 62° 11' E - Elev 700m *LST=GMT +5 hours NT= +4
01/73-04/91 09/93-02/94

