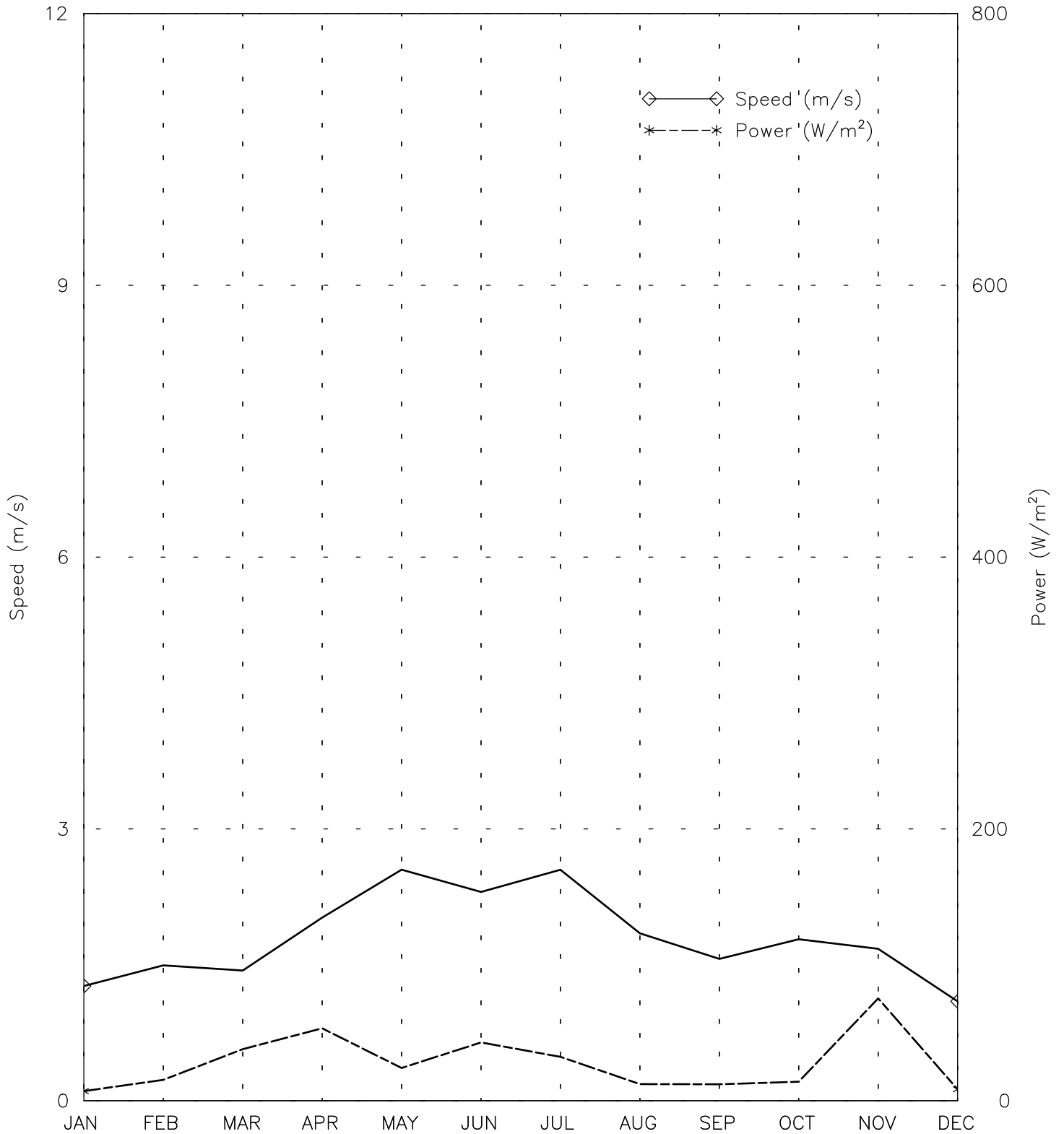




# SPEED AND POWER BY MONTH

TIRIN KOT AF - 409770

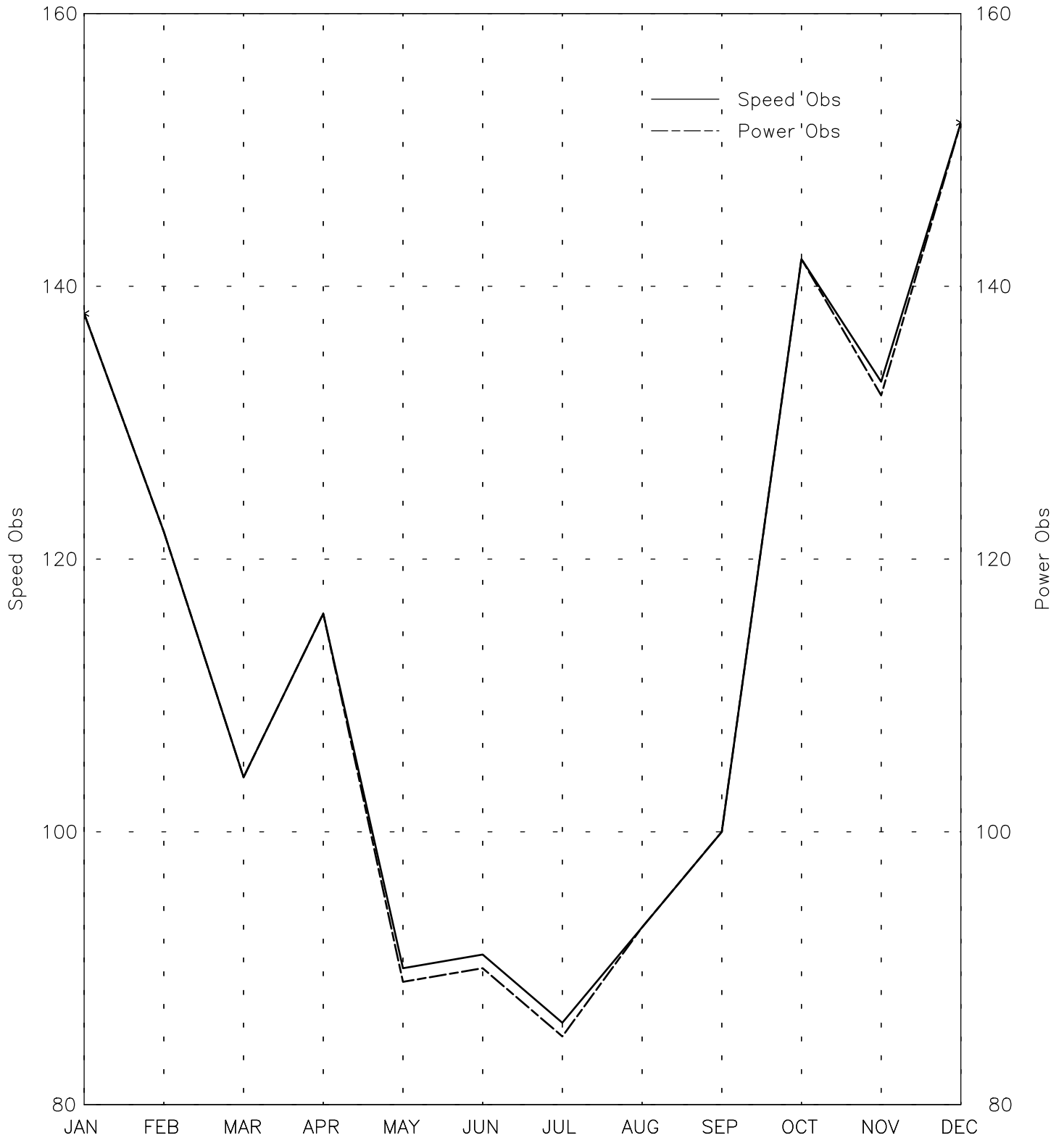
32° 37' N 65° 52' E - Elev 1350m \*LST=GMT +5 hours NT= +4  
08/73-12/73 02/75-12/84 03/86-07/86 10/01-04/02



# OBSERVATIONS BY MONTH

TIRIN KOT AF - 409770

32° 37' N 65° 52' E - Elev 1350m \*LST=GMT +5 hours NT= +4  
08/73-12/73 02/75-12/84 03/86-07/86 10/01-04/02

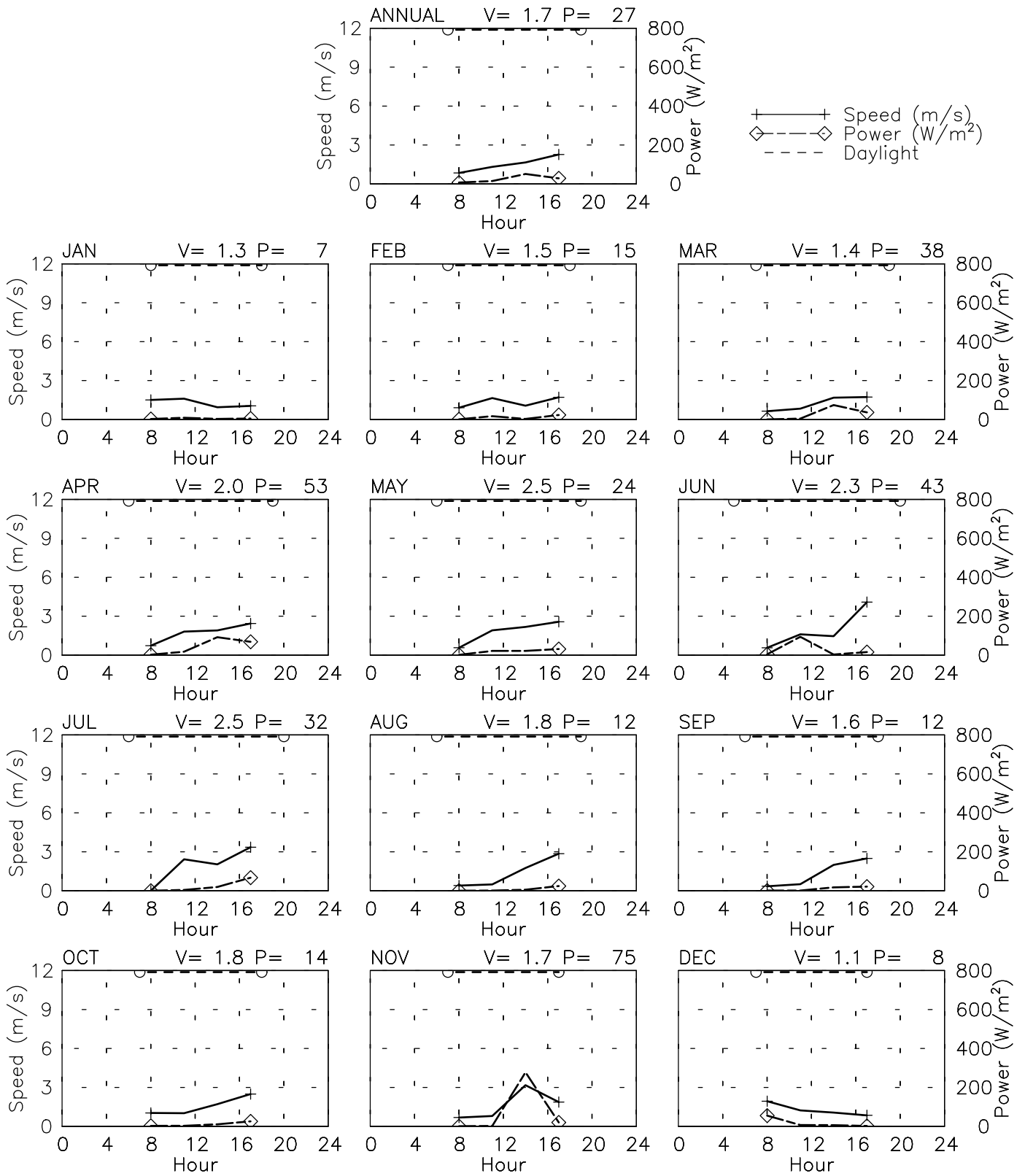


Month  
Tue Aug 8 17:07:01 2006

# SPEED AND POWER BY HOUR

TIRIN KOT AF - 409770

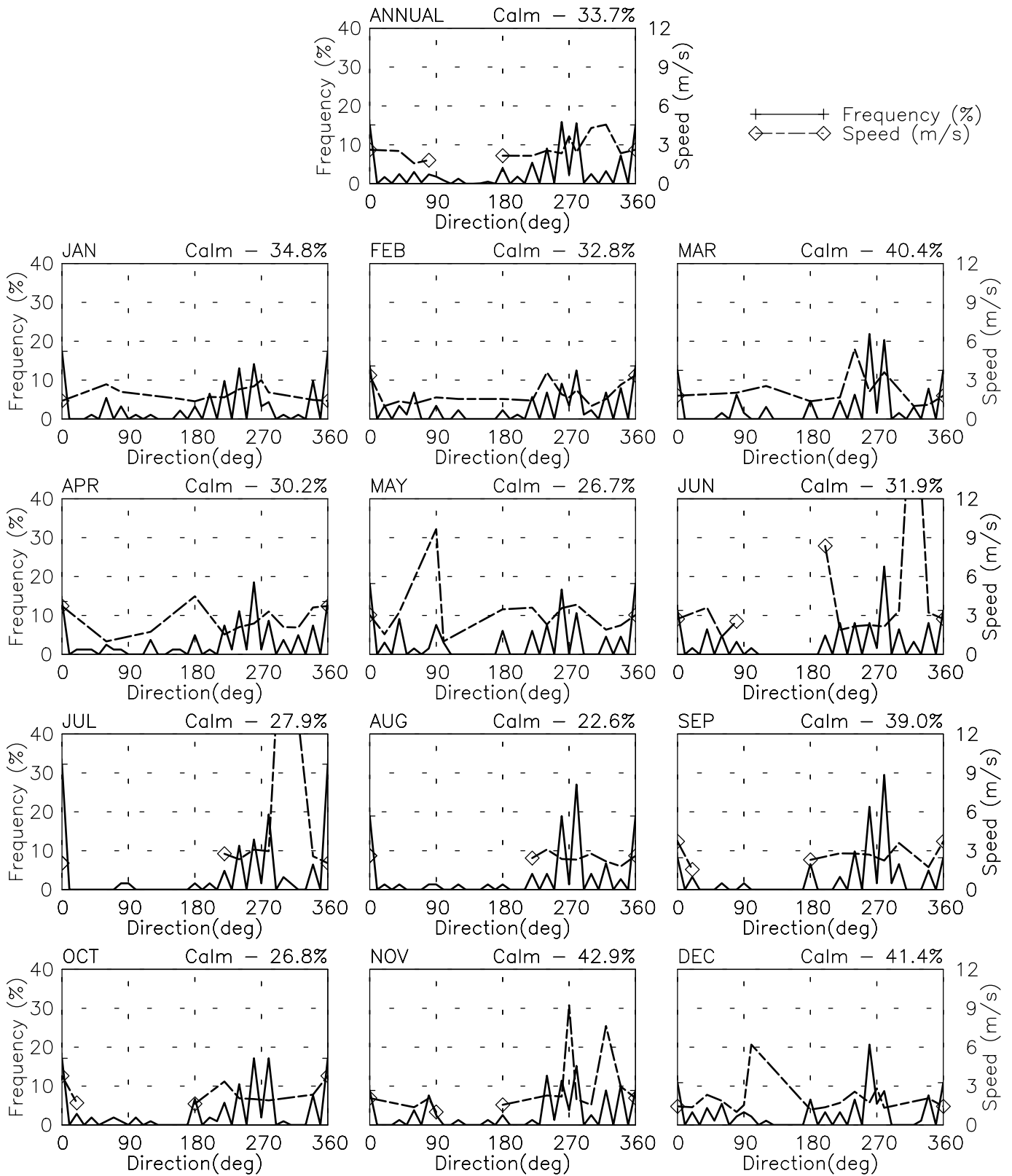
32° 37' N 65° 52' E - Elev 1350m \*LST=GMT +5 hours NT= +4  
 08/73-12/73 02/75-12/84 03/86-07/86 10/01-04/02



# FREQUENCY AND SPEED BY DIRECTION

TIRIN KOT AF - 409770

32° 37' N 65° 52' E - Elev 1350m \*LST=GMT +5 hours NT= +4  
 08/73-12/73 02/75-12/84 03/86-07/86 10/01-04/02

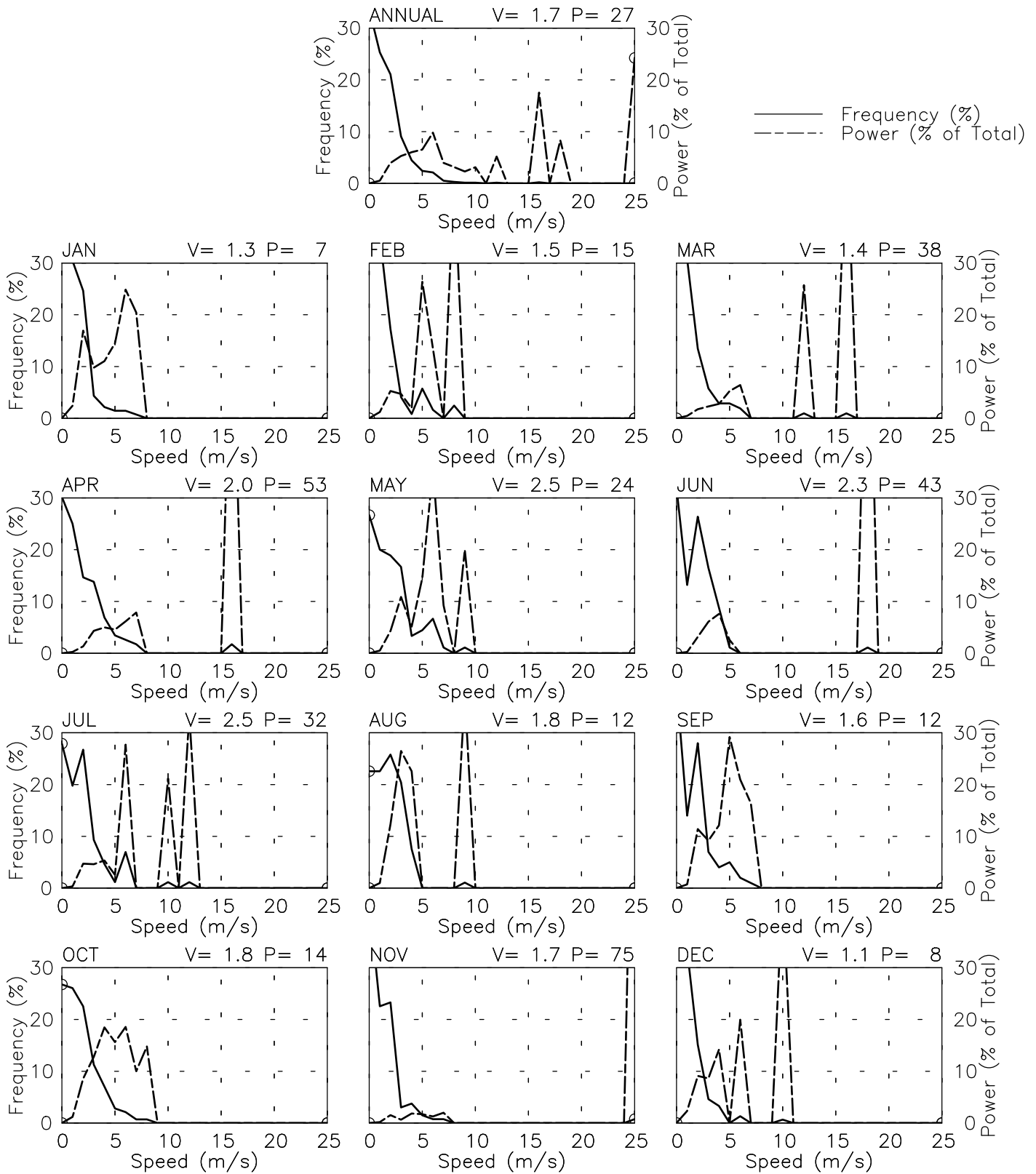


# FREQUENCY OF SPEED & PERCENT OF POWER BY SPEED

TIRIN KOT AF - 409770

32° 37' N 65° 52' E - Elev 1350m \*LST=GMT +5 hours NT= +4

08/73-12/73 02/75-12/84 03/86-07/86 10/01-04/02



# PREVAILING DIRECTION & SPEED BY HOUR

TIRIN KOT AF - 409770

32° 37' N 65° 52' E - Elev 1350m \*LST=GMT +5 hours NT= +4

08/73-12/73 02/75-12/84 03/86-07/86 10/01-04/02

