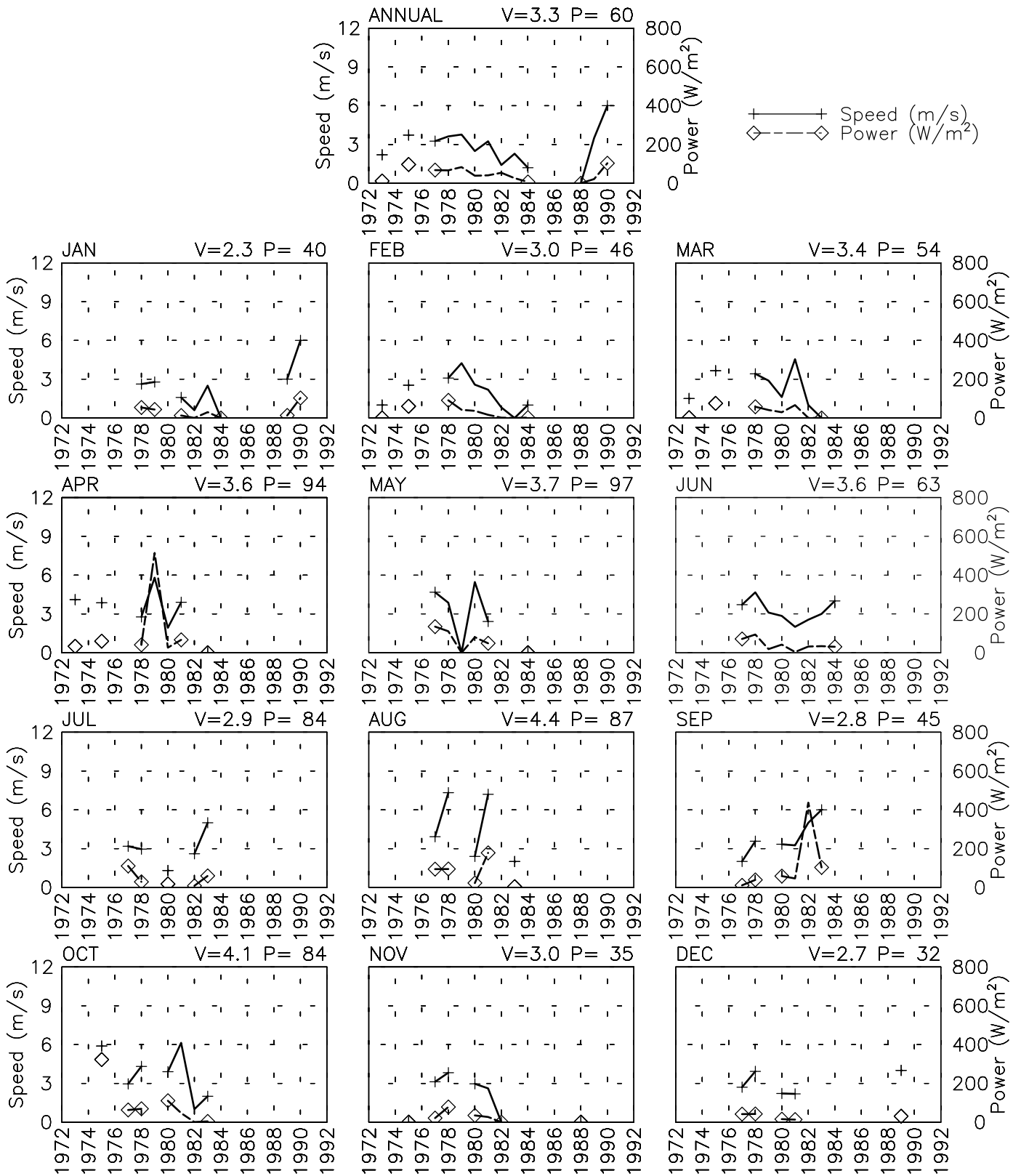


SPEED AND POWER BY YEAR

URGOON AF - 409840

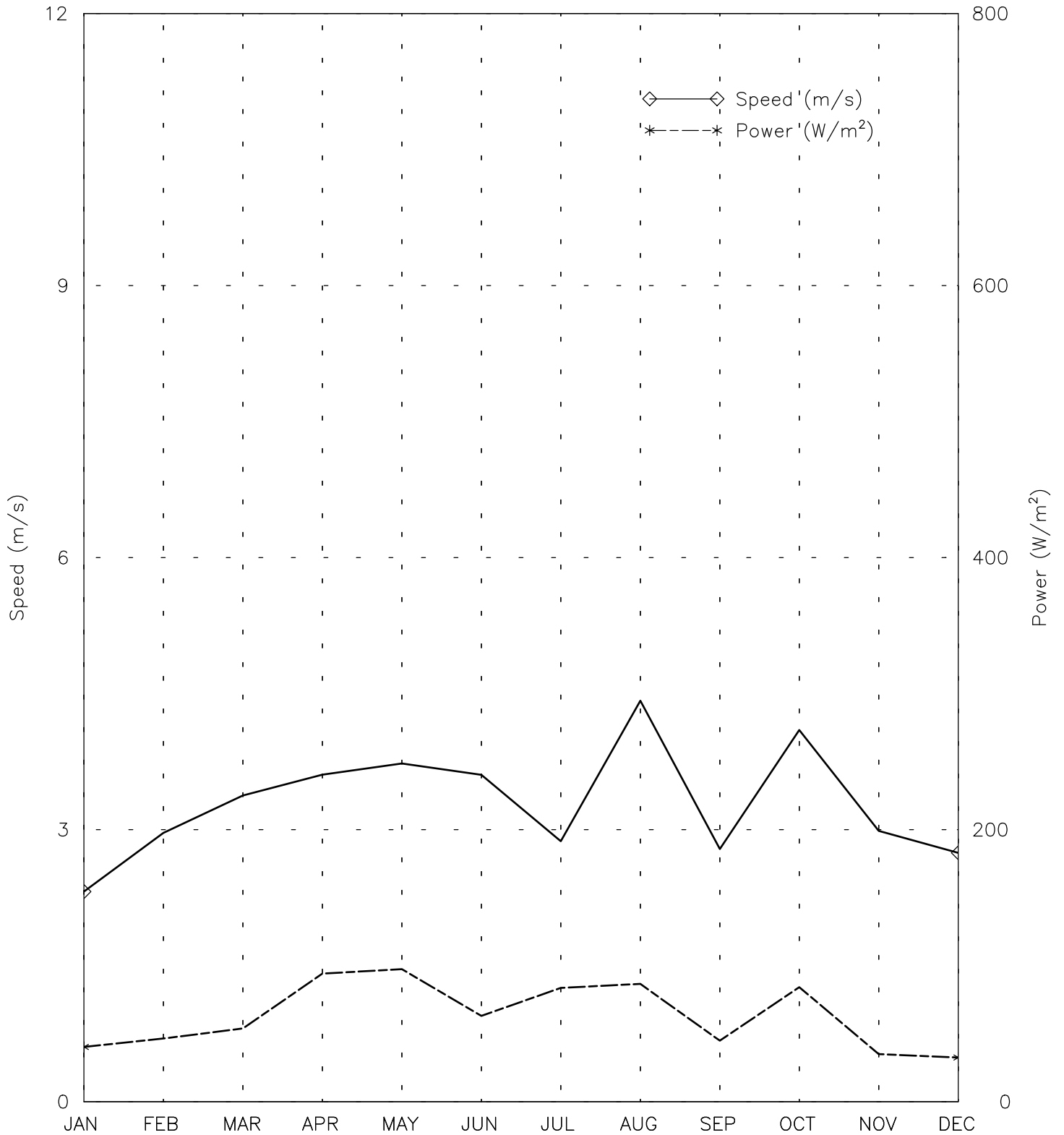
32° 55' N 69° 08' E - Elev 2262m *LST=GMT +5 hours NT= +5
02/73-04/73 02/75-11/75 05/77-06/84 11/88-01/90



SPEED AND POWER BY MONTH

URGOON AF - 409840

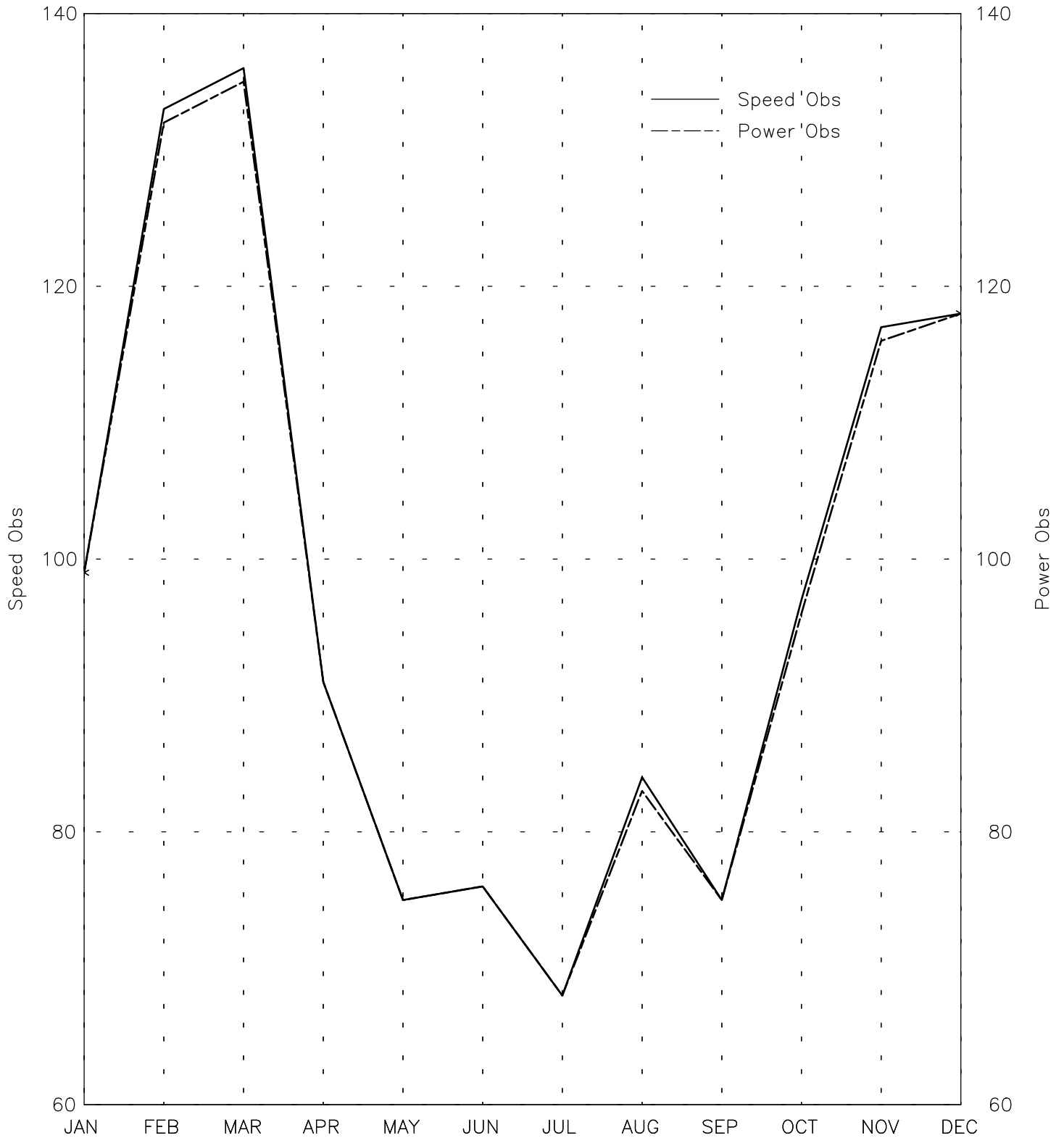
32° 55' N 69° 08' E - Elev 2262m *LST=GMT +5 hours NT= +5
02/73-04/73 02/75-11/75 05/77-06/84 11/88-01/90



OBSERVATIONS BY MONTH

URGOON AF - 409840

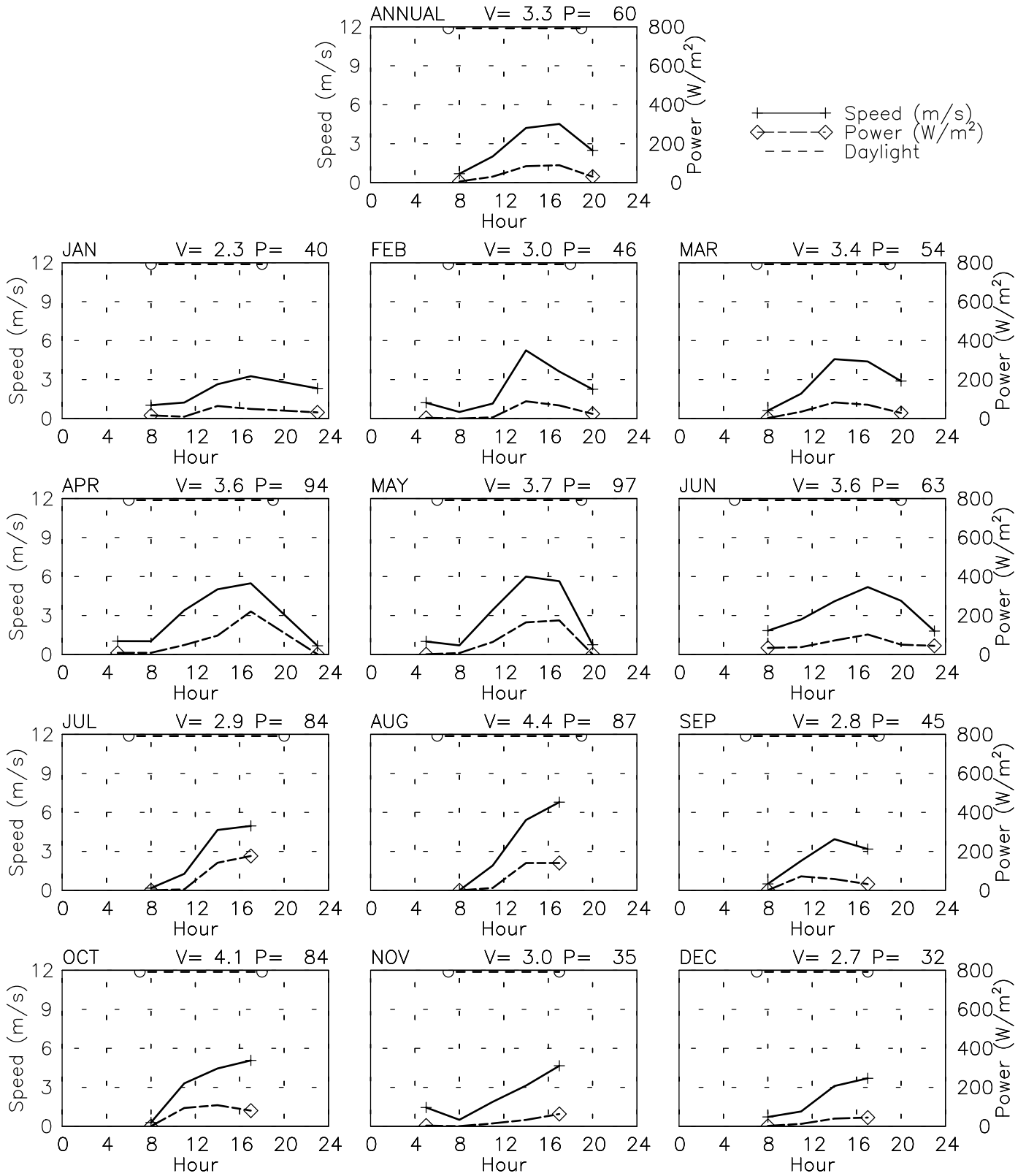
32° 55' N 69° 08' E - Elev 2262m *LST=GMT +5 hours NT= +5
02/73-04/73 02/75-11/75 05/77-06/84 11/88-01/90



SPEED AND POWER BY HOUR

URGOON AF - 409840

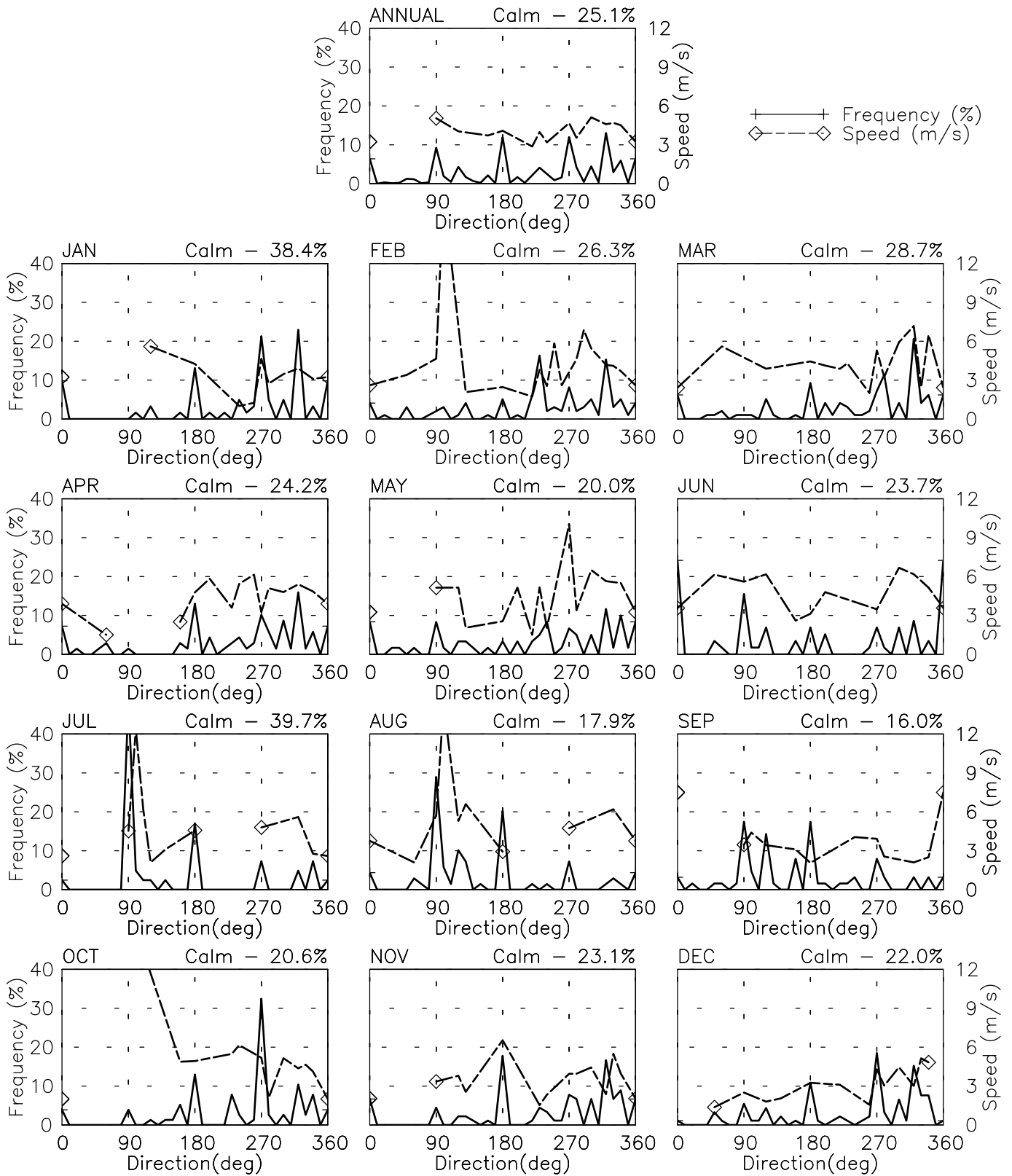
32° 55' N 69° 08' E - Elev 2262m *LST=GMT +5 hours NT= +5
 02/73-04/73 02/75-11/75 05/77-06/84 11/88-01/90



FREQUENCY AND SPEED BY DIRECTION

URGOON AF - 409840

32° 55' N 69° 08' E - Elev 2262m *LST=GMT +5 hours NT= +5
 02/73-04/73 02/75-11/75 05/77-06/84 11/88-01/90

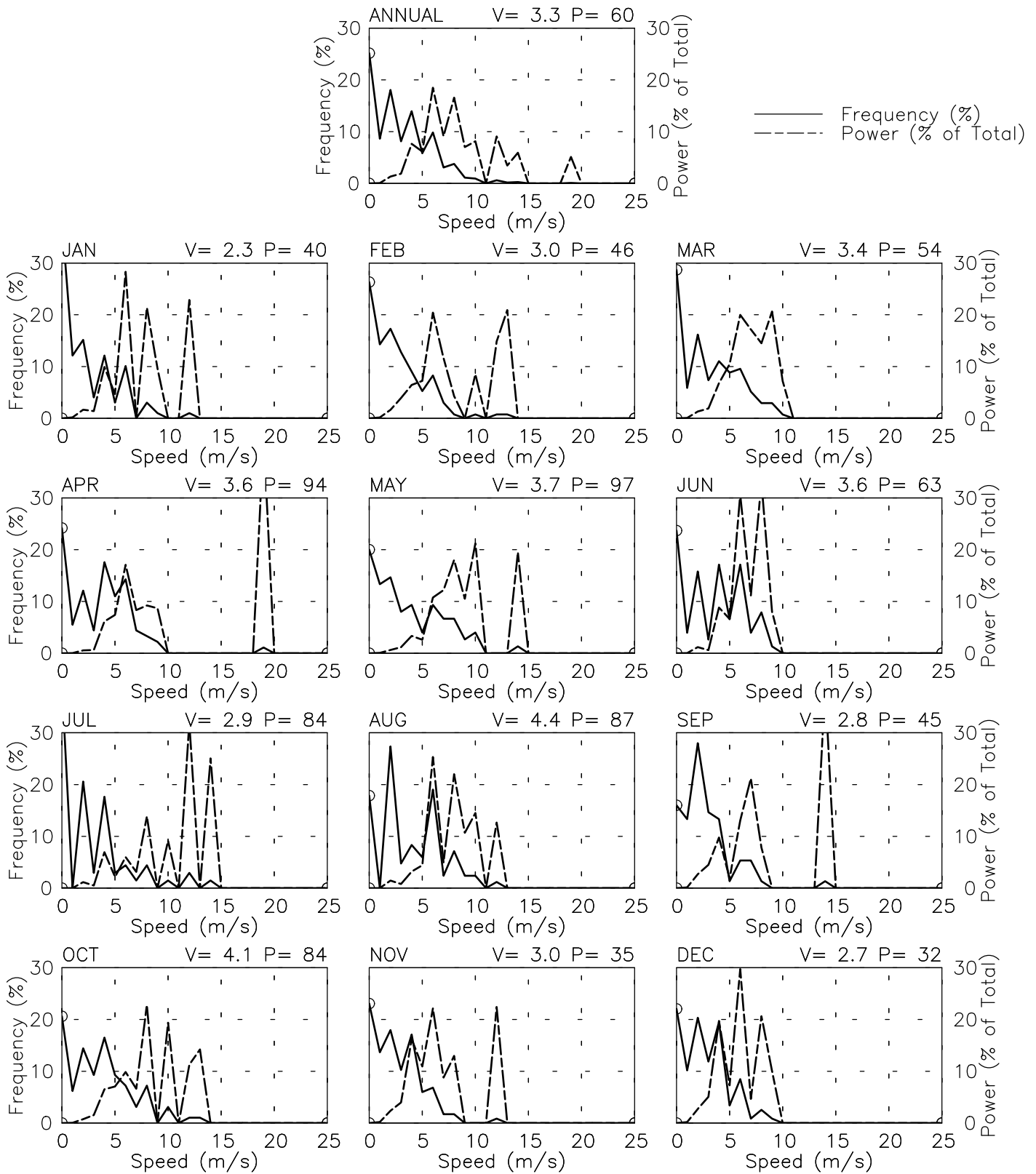


FREQUENCY OF SPEED & PERCENT OF POWER BY SPEED

URGOON AF - 409840

32° 55' N 69° 08' E - Elev 2262m *LST=GMT +5 hours NT= +5

02/73-04/73 02/75-11/75 05/77-06/84 11/88-01/90



PREVAILING DIRECTION & SPEED BY HOUR

URGOON AF - 409840

32° 55' N 69° 08' E - Elev 2262m *LST=GMT +5 hours NT= +5

02/73-04/73 02/75-11/75 05/77-06/84 11/88-01/90

