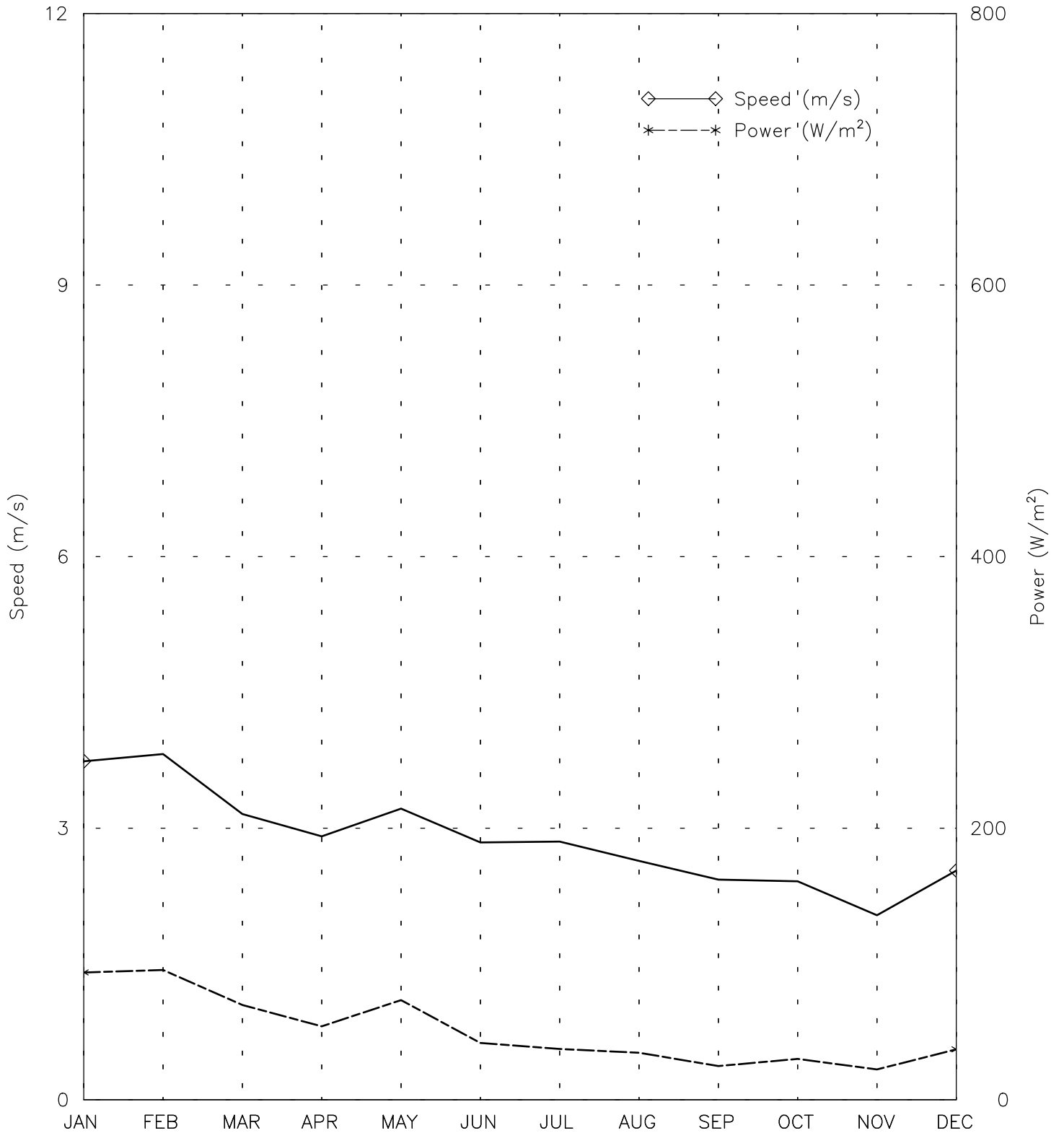




# SPEED AND POWER BY MONTH

KANDAHAR AIRPORT AF - 409900

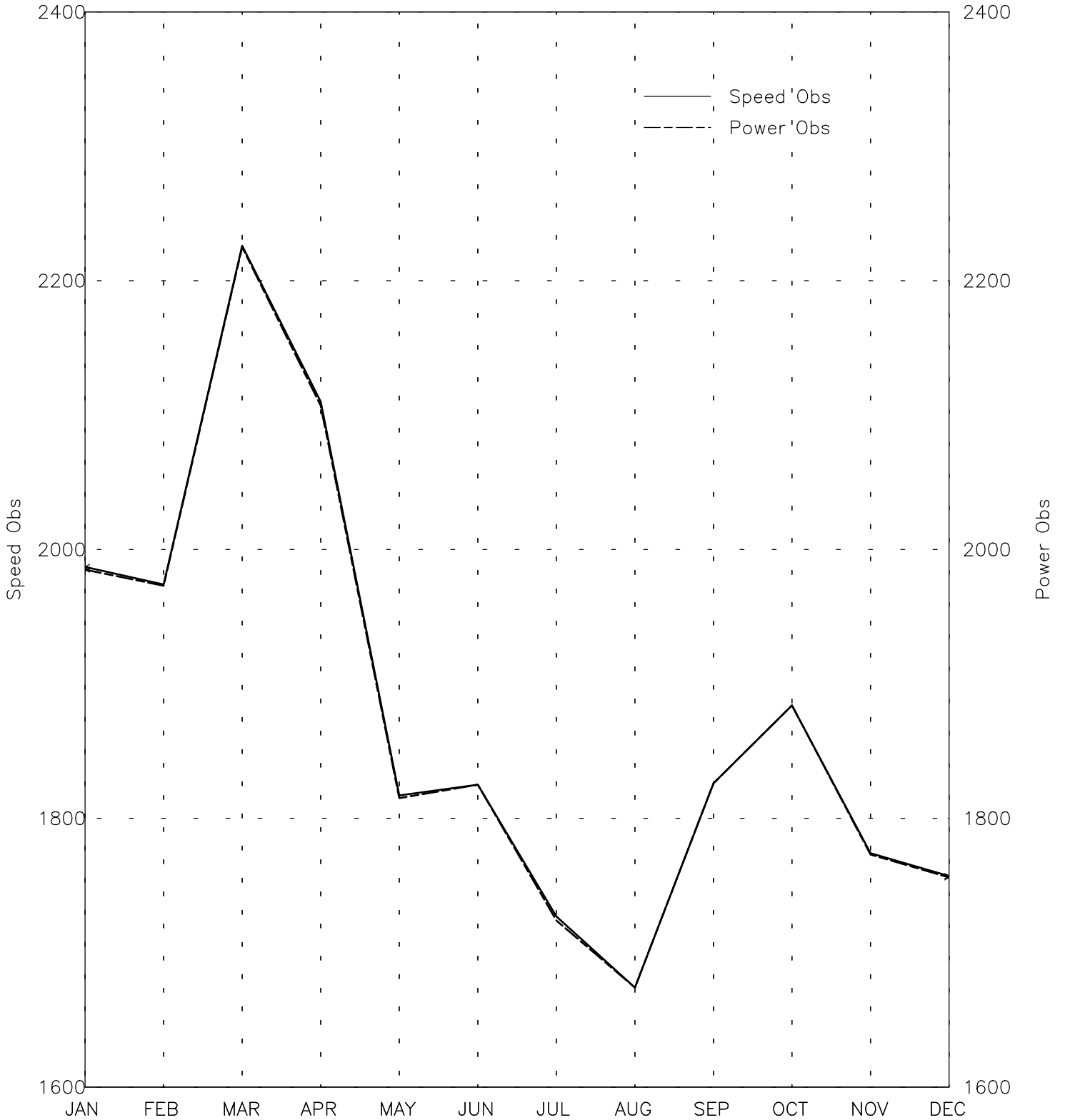
31° 30' N 65° 51' E - Elev 1010m \*LST=GMT +5 hours NT= +4  
01/73-11/90 04/03-04/03



# OBSERVATIONS BY MONTH

KANDAHAR AIRPORT AF - 409900

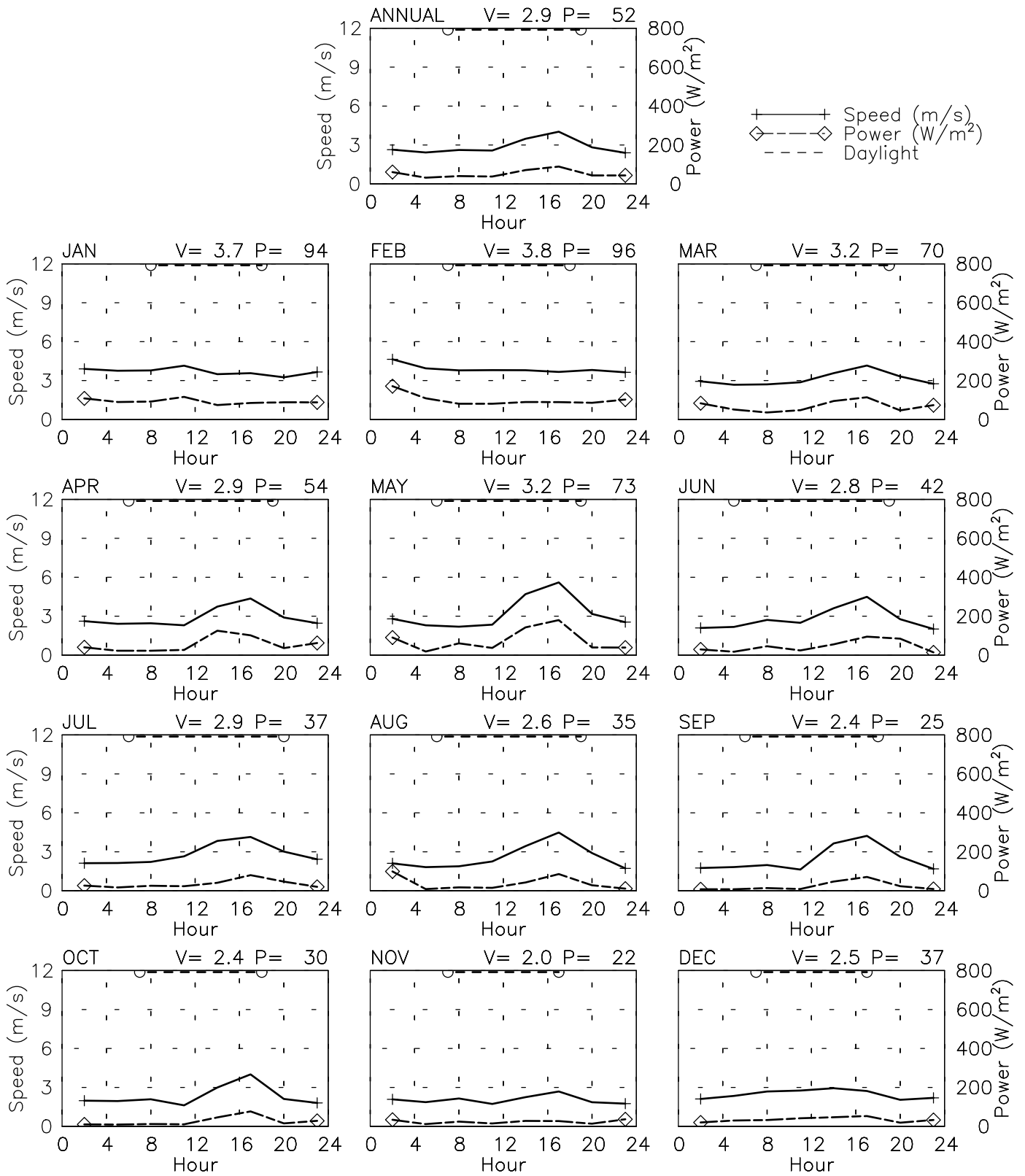
31° 30' N 65° 51' E - Elev 1010m \*LST=GMT +5 hours NT= +4  
01/73-11/90 04/03-04/03



# SPEED AND POWER BY HOUR

KANDAHAR AIRPORT AF - 409900

31° 30' N 65° 51' E - Elev 1010m \*LST=GMT +5 hours NT= +4  
01/73-11/90 04/03-04/03

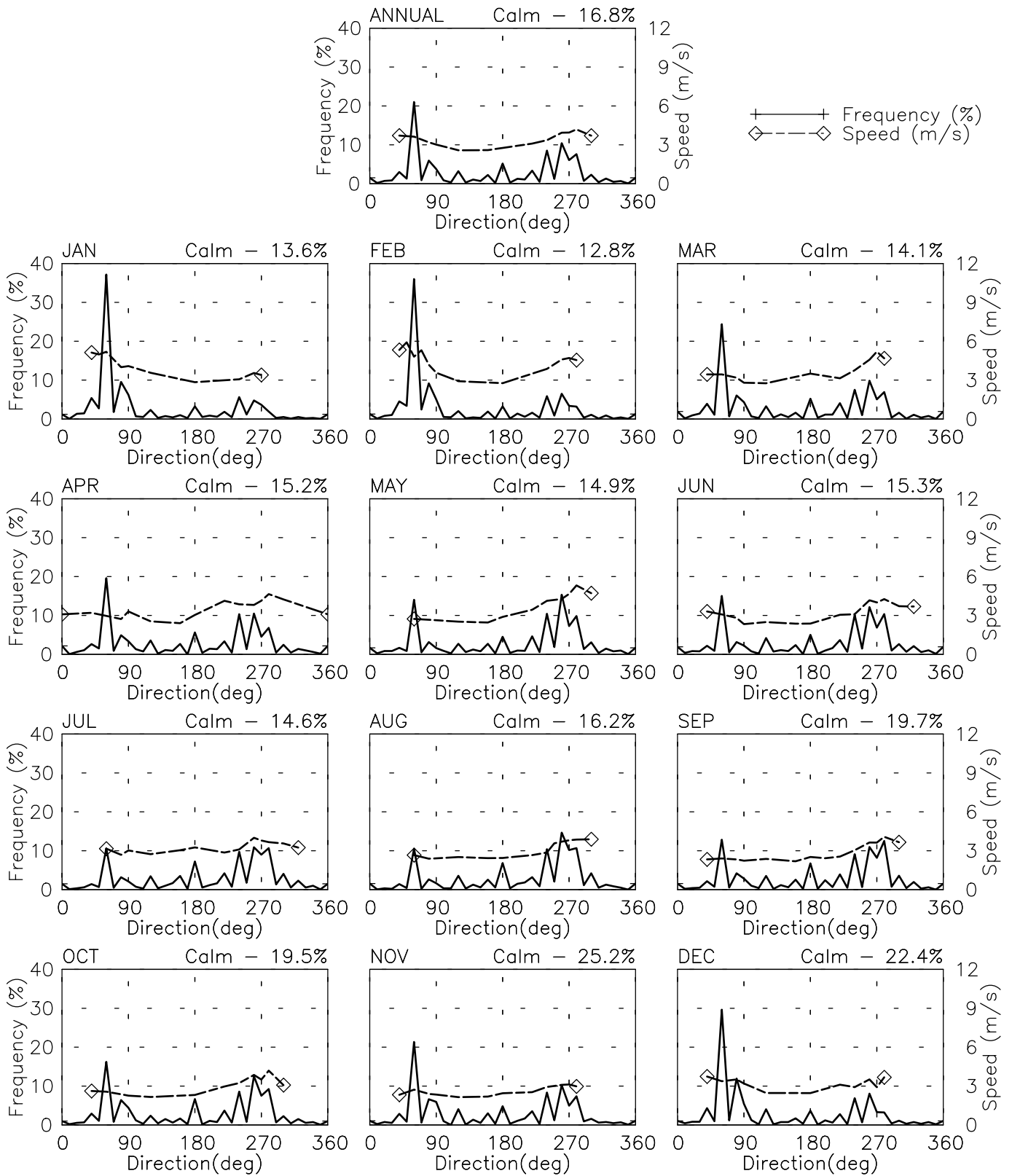


# FREQUENCY AND SPEED BY DIRECTION

KANDAHAR AIRPORT AF - 409900

31° 30' N 65° 51' E - Elev 1010m \*LST=GMT +5 hours NT= +4

01/73-11/90 04/03-04/03

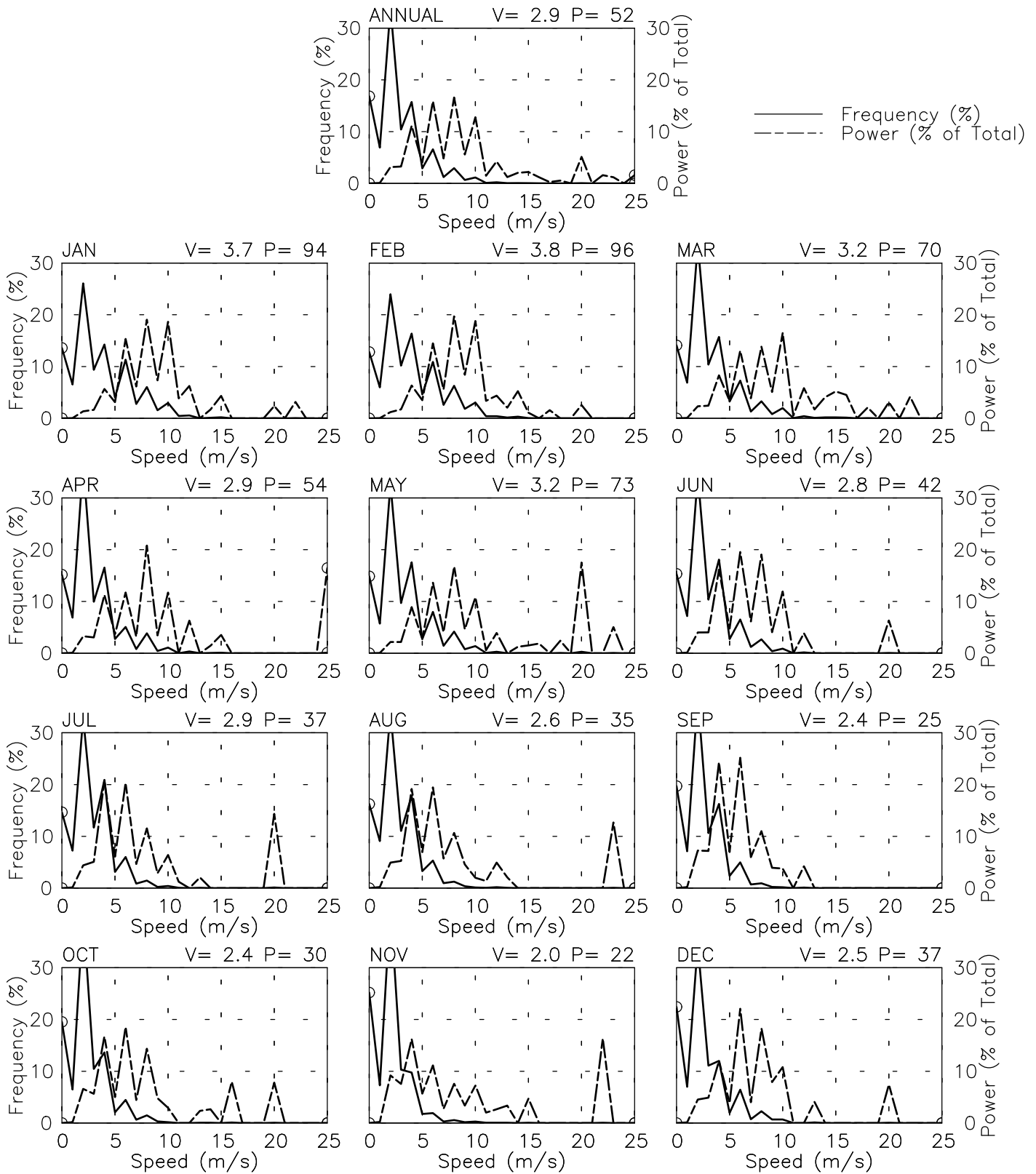


# FREQUENCY OF SPEED & PERCENT OF POWER BY SPEED

KANDAHAR AIRPORT AF - 409900

31° 30' N 65° 51' E - Elev 1010m \*LST=GMT +5 hours NT= +4

01/73-11/90 04/03-04/03



# PREVAILING DIRECTION & SPEED BY HOUR

KANDAHAR AIRPORT AF - 409900

31° 30' N 65° 51' E - Elev 1010m \*LST=GMT +5 hours NT= +4

01/73-11/90 04/03-04/03

